
INTEGRATED WASHING MACHINE

INSTRUCTIONS MANUAL

EN

EN


Contents

1. The new washing system	3
2. Safety warnings	4
3. Installation instructions	6
4. Description of controls	13
5. Washing instructions	17
6. Cleaning and maintenance	23
7. Troubleshooting	25
8. Control panel symbols	27

This appliance is marked according to the European directive 2002/96/EC on Waste Electrical and Electronic Equipment (WEEE).

By ensuring this product is disposed of correctly, you will help prevent potential negative consequences for the environment and human health, which could otherwise be caused by inappropriate waste handling of this product.



The symbol  on the product, or on the documents accompanying the product, indicates that this appliance may not be treated as household waste. Instead it shall be handed over to the applicable collection point for the recycling of electrical and electronic equipment.

Disposal must be carried out in accordance with local environmental regulations for waste disposal.

For more detailed information about treatment, recovery and recycling of this product, please contact your local city office, your household waste disposal service or the shop where you purchased the product.

1. THE NEW WASHING SYSTEM

This new washing machine is the outcome of years of research. The leading-edge design and the quality of the production processes used to manufacture this product ensure it will give you many years of excellent service. Its concept satisfies all current and future washing requirements.

Its low water, power and detergent consumption help protect the environment and reduce running costs to a minimum.

Water and power consumption has been reduced in all programmes.

These results were achieved by means of a **special washing system** valid for all programmes and all fabrics.

The drum is fitted with three external vanes that keep the water constantly circulating, thereby offering intensive and uniform washing whilst consuming less water.

This ensures your laundry is washed and treated with utmost care.

The new washing system is so effective that normally dirty laundry can even be cleaned without a pre-wash cycle.

Washing times have also been reduced.

Pre-washing is only recommended for very dirty laundry.

Please read the operating instructions with care in order to take full advantage of all the features offered by this washing machine.

Warning!

Please read all the instructions contained in this manual in order to understand how to operate this appliance correctly and safely.

This manual is divided into paragraphs which provide a step-by-step description of all the functions of the appliance. The instructions are easy to understand and are accompanied by detailed illustrations.

This manual provides a quick and easy reference for answering all your questions concerning the use of your new washing machine.

Keep this manual near the machine for future consultation.

When selling or moving the appliance, make sure this manual remains with the machine.

2. SAFETY WARNINGS

Attention!

These warnings are given for safety reasons.

Please read them carefully before installing and using the appliance.

This manual forms an integral part of the appliance and must therefore be kept intact together with the machine. Before using the appliance, carefully read all the instructions contained in this manual. Installation **must be performed** by a qualified technician in compliance with the regulations in force. It has been designed for domestic use and complies with EEC Directives 72/23, 89/336 (including 92/31 and 93/68) currently in force. The appliance is designed for the following purpose: washing linen or fabrics declared by their manufacturers to be suitable for machine washing by means of an appropriate symbol. Any other use shall be considered improper. **The manufacturer declines all responsibility for uses other than those described above.**

The name plate featuring the technical data, serial number and markings is visibly positioned on the inner edge of the door. **This name plate must never be removed.**

Do not leaving discarded packaging materials unsupervised within the home. Separate the various packaging materials and take them to the nearest sorted waste collection centre.

The electrical and plumbing work require to install the appliance may only be performed by qualified technicians.

The appliance must be provided with an earth connection in accordance with the electrical safety regulations in force. **The manufacturer declines all responsibility for damage to persons or property resulting from failure to earth the appliance or from a defective earth connection.**

If the appliance is not connected to the electrical power supply by means of a plug, it is necessary to install an isolation switch with a contact opening gap of at least 3 mm.

The plug on the power cord and the corresponding socket must be of the same type and must conform to the regulations in force. Check that the voltage and frequency of the electrical power supply match the ratings on the name plate. Avoid using adaptors or shunt connections. Never unplug the appliance by pulling the power cord.

The machine is only disconnected from the electrical power supply if the plug has been removed from the socket or if the general switch has been turned off. After installation, the plug must remain accessible.

The appliance must always be connected to the water supply with new hoses (supplied with the appliance). Old hoses must never be reused.

Make sure the appliance does not lie on the power cord.

Before use, make sure the tub assembly has been released (see instructions).

If the tub assembly has not been released, it may damage the appliance or adjacent furniture or appliances during the spin cycle.

The washing machine must never be used in vehicles, on ships or planes, or in special environmental conditions such as explosive or corrosive (powder, vapour and gas) atmospheres or near explosive and/or corrosive liquids.

Do not install the washing machine in areas subject to frosting. Frozen pipes may burst under pressure.

Make sure that the drain hose is **securely attached to the basin and cannot move.**

If it is not securely fitted, the repulsive force of the water may detach it from the basin and cause **flooding.**

When attaching the hose to the basin, **make sure the water drains away rapidly and does not fill the basin up.**

Do not overload the appliance.

Never use detergents containing solvents or chemicals.

These may damage the machine and form poisonous fumes.

They may also catch fire and explode.

Do not wash petrol-soaked garments in the washing machine. Make sure there are no inflammable items (e.g.: lighters, matches, etc.) in pockets before washing.

If volatile fluids have been used to clean garments, make sure that the substances have been removed before loading them in the washing machine.

Before loading garments for washing, make sure the pockets are empty, the buttons securely fixed and the zips closed.

Do not wash frayed or torn garments.

The glass of the door will heat up considerably when washing at elevated temperatures.

Make sure all the water has drained away before you open the door.

If water is present, only open the door after draining it. If in doubt, read the instructions manual.

The water in the machine is not drinkable!

Swallowing washing machine detergents can cause lesions in your mouth and throat.

Before removing laundry from the washing machine, **make sure the drum has stopped moving.**

Always switch off the appliance after use to avoid wasting electricity.

Leave the door ajar between one wash and the next in order to keep the gasket in good condition.

Prolonged inactivity.

If the machine is left inactive for a long period: disconnect the machine from the electricity and water supplies and leave the door ajar to prevent bad smells from forming.

In the event of a fault, **never attempt to repair the machine yourself.** Disconnect the appliance from the electrical power supply and shut off the water tap. Then call a qualified technician. **Repairs may only be performed by qualified technicians.**

Repairs performed by unqualified people may be hazardous for users.

Obsolete appliances must be rendered unusable: make sure that the door cannot be closed (to prevent children from getting trapped inside while playing and risking their lives) and cut off the power cord after unplugging it.

The appliance must then be taken to a sorted waste collection centre.

This appliance is intended for use by adults.

Do not allow children to tamper with the controls or play with the washing machine.

Do not allow children to approach the appliance while it is working.

Keep children away from the appliance.

Small animals or children may get inside the washing machine.

Always check the inside of the drum before use and **do not allow children to play with the appliance.**

Packaging materials (plastic bags, polystyrene, metal profiles, etc.) must not be left within reach of children.

Keep children away from the machine when the door or detergent tray is open; the appliance may contain residues of detergent which can cause irreversible damage to the eyes, mouth and throat, as well as possible death by suffocation.

Important !

This appliance is easy to use.

In order to obtain the best results, however, read this manual with care and follow all the instructions before starting.

The manual gives instructions and useful advice on how to install, use and service the appliance correctly.

The manufacture declines all responsibility for damage to persons or property resulting from failure to observe the above precautions, from tampering with even just a single component of the appliance, or from the use of unoriginal spare parts.

3. INSTALLATION INSTRUCTIONS

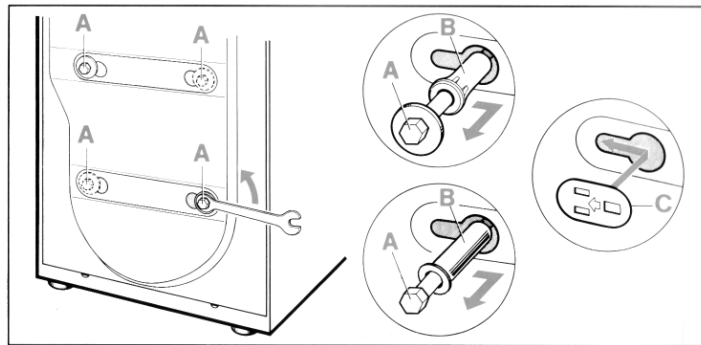
Important !

The appliance must be installed by a specialised technician according to current regulations.
This washing machine is very heavy. Take care when lifting it.

3.1 UNPACKING

The inside of the machine comprises a moving assembly which is blocked for transport purposes by the screws (A) located at the rear of the washing machine.

1. Release the assembly by removing these screws with a 13 mm wrench.
2. Remove the screws (A) and relative spacers (B) from the back of the washing machine.
3. To prevent water from entering the machine, or people from touching live components with their fingers, **close the four holes left open by the screws with the supplied plastic plugs (C).**

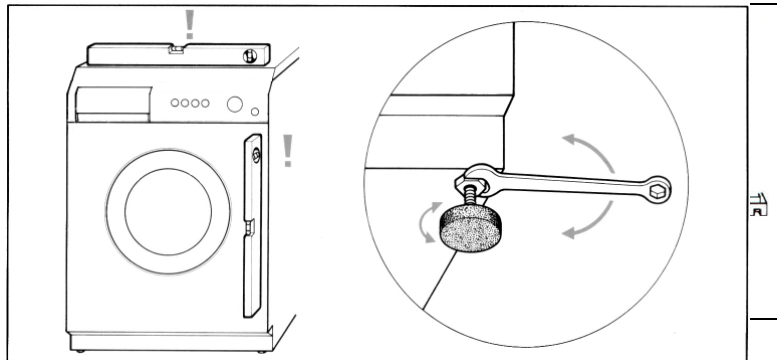


Attention!

- Do not turn the machine upside down and do not place it on its side.
- Keep all the components used to lock the drum assembly as they will be needed if you decide to move the appliance in future.

3.2 POSITIONING AND LEVELLING

1. Place the appliance in the chosen position.
2. Carefully level the machine in all directions using a spirit level and adjusting the feet if necessary. After adjusting the machine, lock the feet with the relative lock nuts.



The water inlet and drain hoses can be turned to the right or left depending on installation requirements.

Attention!

- **Carry out this operation carefully to prevent the washing machine from vibrating, generating noise or moving during operation.**
- **If the appliance is installed adjacent to a carpeted floor, ensure that the openings on its underside are not obstructed.**
- Make sure the washing machine does not touch walls, furniture, etc., while it is working.
- The appliance must not be installed behind a lockable door, or sliding door, or a door with hinge on the opposite side to the tumble dryer

3.3 ADDITIONAL IMPORTANT INSTALLATION INSTRUCTIONS

- Carefully read the installation instructions in point 3 on page 6 of the washer dryer installation manual.
- After the initial instructions have been adhered to. I.e. removing transit bolts and fitting the adjustable feet etc. Using a spirit level, make sure that the washer dryer is completely level and the overall height of the legs, including the rubber foot and the locking nuts, is no greater than 25mm maximum.
- When installing the washer dryer you must ensure that the leg locking nuts are firmly tightened.

Under no circumstances should the washer dryer be installed with the front legs higher than the rear. If attention is required in levelling the furniture door then we would advise fitting the "push-push" catch and the rubber furniture door buffer. It is important to note that any other installation other than one of a level nature could induce vibration or excessive movement of the washer dryer, especially on the spin cycle.

- The machine should be installed directly onto a clean, sound and level floor, and as low as possible. Please note this machine should not be installed on carpets, foam-backed flooring, laminate and parquet floors. If, however, for cosmetic purposes the machine height needs to be raised, it must not be done so by raising the height of the legs, but via an additional baseboard.

As a manufacture we do not recommend or specify any particular means by which to raise the washer dryer, but have found that dense board, between 18mm and 40mm in thickness, grip-fixed and screwed to the floor and capable of supporting the weight of the washer dryer without distortion, and cut to the dimensions of the machine base appears to be good installation practice.

Please note that any material that has a shiny or a slippery finish should not be used.

- Floating floors. As more apartments are being built with floating floors, additional care must be taken when installing the washer dryers. The current flooring specifications state that additional bracing must be installed in areas directly below electric storage heaters and door thresholds. It is important to note that whilst some electric storage heaters have a weight of 80kgs, washer dryers, when loaded, have a combined weight in excess of 90kgs and the oscillating nature of any loaded washer dryer will deliver varying stresses and loadings on to the adjacent floor area.

However because floating flooring manufacturers current specifications do not state that additional bracing is required in the floor area below heavy domestic appliances the flooring area below washer dryers is generally only supported in one direction and not two as is the case with electric storage heaters. Therefore in order to provide the house purchaser with additional peace of mind, and to prevent any unnecessary vibration and oscillation in the kitchen area we would advise house builders to consider fitting additional floor bracing at the time of floor installation to a similar specification to that which is required for the installation of electric storage heaters.

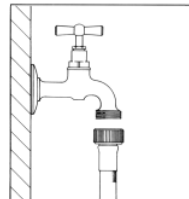
- The ideal base surface for any heavy domestic appliance to stand on is one of solid concrete, as any minor leak from the domestic water supply will not adversely effect the area adjacent to the washer dryer, as any leak onto a floating and/or wood laminate floor could cause extensive water damage.

Please note that as these machines are water tested prior to leaving our factory a small amount of residual water will be present in the hoses, therefore care must be taken to prevent any minor water spillage during installation. Please also ensure that the water feed hose are correctly fitted and tightened, both at the mains and the machine connectors.

- Please ensure that installation is carried out in accordance to the above installation instructions. As failure to do so could invalidate the guarantee.

3.4 WATER SUPPLY CONNECTION

- Check that inlet pressure lies between the following values: **50-900kPa**. For higher pressures, install a pressure reducer.
- Connect the **cold water** inlet hose (**light blue** ring nut) to the cold water tap with a $\frac{3}{4}$ gas thread, taking care to screw it firmly into place in order to prevent leaks. The water inlet hose must not be bent or crushed and must not be replaced or cut.
- If a **hot water** inlet is used, inlet water temperature must not exceed 60°C and the hose with the **red** ring nut must be connected to the hot water tap.

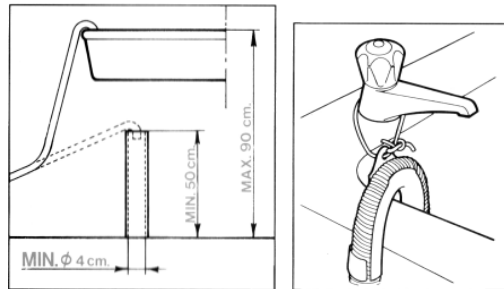


Attention!

- If the water pipe is new or has not been used for a long time, let a certain amount of water run before attaching the inlet hose. This stops any deposits of sand and other impurities from clogging the filters used by the machine to protect the water inlet valves.
- The new hose-set supplied with the appliance are to be used and the old hose-set should not be reused

3.5 DRAIN CONNECTION

1. Insert the end of the drain hose into a drain pipe having an internal diameter of at least 4 cm and a height ranging between 50 and 90 cm, or attach it (using the relative curved plastic profile) to a basin or bath tub.



2. Always check that the end of the drain hose is securely attached in order to prevent the repulsive force of the water from moving it out of position.

Attention!

- Do not bend or obstruct the hose as this will reduce the flow of water.
- Any extensions to the drain hose must not exceed 1 metre, they must have the same internal diameter and must not be obstructed in any way.
- In no case may the end of the drain hose be submerged in water.

3.6 ELECTRICAL CONNECTION

Before fitting the plug into the socket, make sure that:

1. Input voltage matches that indicated on the name plate attached to the inner edge of the door.
2. The contactor, pressure relief valves, power line and socket are capable of withstanding the maximum rated power input indicated on the name plate.
3. The socket is compatible with the plug supplied with the machine without the need to fit multiple sockets, adaptors or extension leads that could cause overheating or burning.
If the socket does not correspond to the supplied plug, replace the socket with one of a suitable type.

Attention

- The plug must be accessible after installation.
- **The appliance must be earthed.** Plug the machine into a socket fitted with an efficient earth connection.

The manufacturer declines all responsibility for damage to persons or property resulting from failure to earth the appliance or from a defective earth connection. Correct electrical connections guarantee maximum safety.

- This appliance complies with EEC directive 89/336 of 3.5.89 (modified by EEC directive 92/31) relative to the elimination of radio interference.
- If the power cord is damaged, only replace it with an original spare part available from our service department.
- **Do not insert/remove the plug from the socket if your hands are wet.**
- **Remove the plug from the socket by gripping the plug and not the cord.**

3.7 FITTING THE FURNITURE DOORS

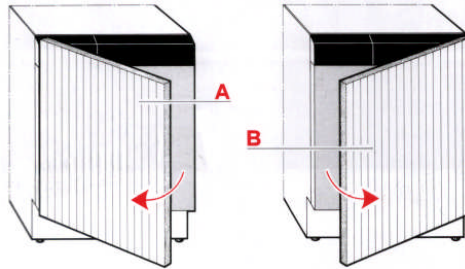
Once the washer dryer has been correctly installed and commissioned, the furniture door can be fitted following the dimensions on the template and the instruction enclosed in the washer dryer packaging.

Please note that only furniture doors of a thickness between 16mm and 21mm are compatible with this washer dryer.

Important – The machine complies with the current safety provisions governing electrical equipment. It must be installed by a specialised technician in compliance with the current standards in order to prevent it from becoming a potential danger for the user.

3.7.1 How to fit the furniture door

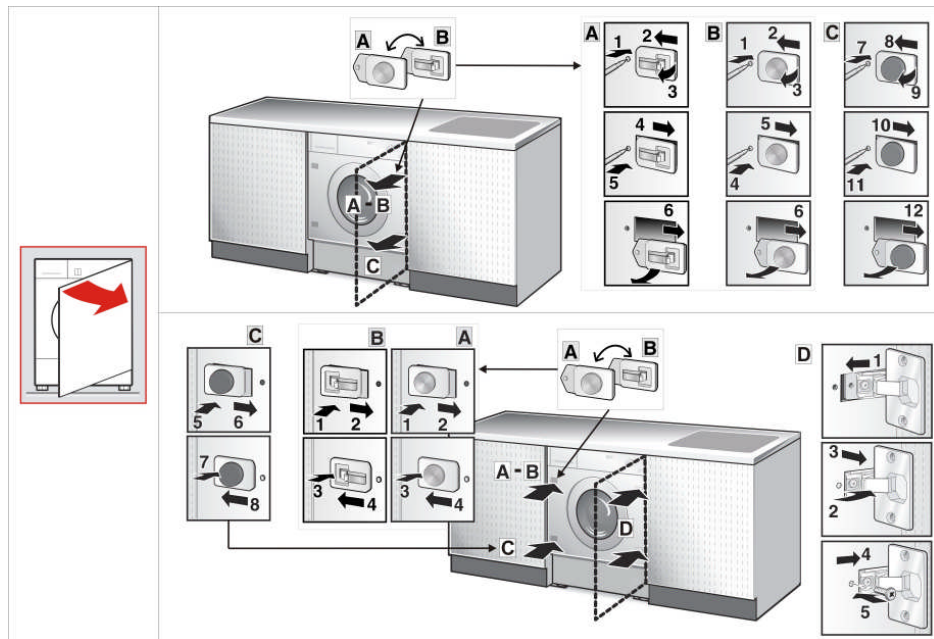
The furniture door that covers the front can be hinged on either the left side or right side.



For practical reasons, it is advisable to maintain the same opening direction as the glass door (with hinges applied to the left-hand side).

The appliance has hinge supports on the left-hand side, whilst the push-push closing system is mounted on the upper right-hand part.

If the magnetic closing mechanism is required or it is necessary to change the side, see the illustration below.



Important! Ensure that the appliance is disconnected from electricity supply before installing the furniture door (during which all hinging and closing mechanisms must be removed from the front) on to the washer dryer).

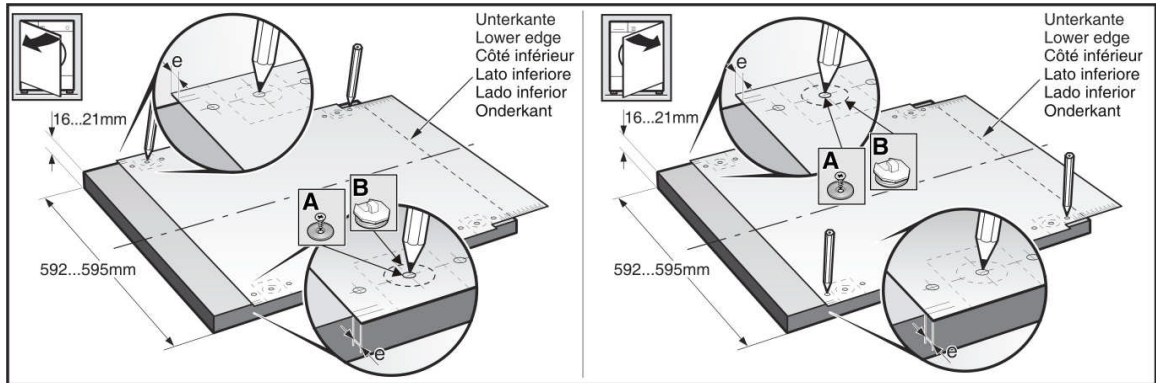
Warning – To hinge the panel on the right-hand side (opening direction opposite to that of the glass door), completely remove the hinge supports (D), the closing hook (B) or the magnet (A) from the front part of the machine and fit them to the opposite side.

All parts fitted to the front of the washing dryer must be correctly remounted (no hole must be left open). This will prevent users from touching live parts of the appliance.

Our company declines all responsibility for damage caused by failure or negligence in complying with these safety provisions.

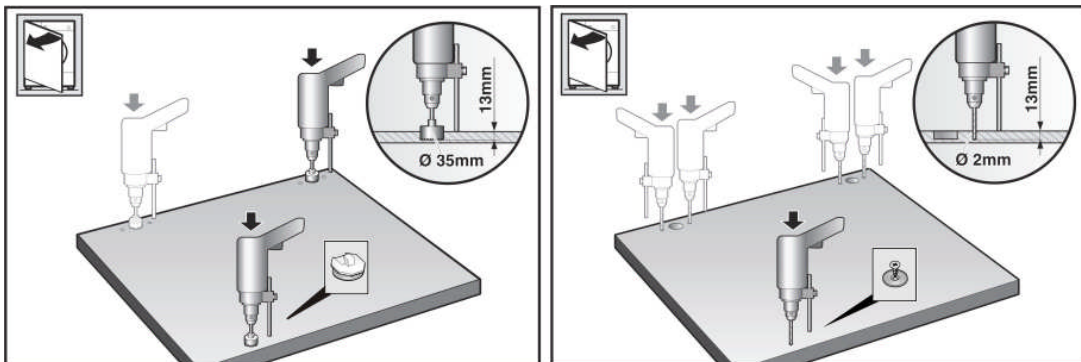
3.7.2 Use of the furniture door fixing template

Proceed in the following way when applying the wooden panel to the washing dryer:

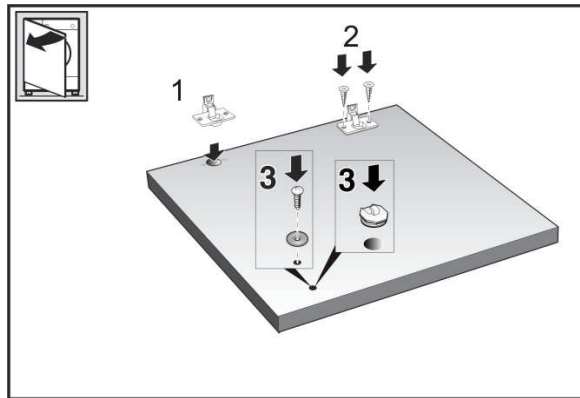


1. When fitting the furniture door utilising the door template you will need to make sure that the bottom and the top of the furniture door will line up with the adjacent cabinet furniture doors.
2. The final positioning of the furniture door hinges will be dictated to by the height or the plinth plus any additional base-board used in conjunction with raising the height of the washer dryer for cosmetic purposes
3. Calculate the height of the plinth: Measure the height of the kitchen baseboard: the height of the wooden panel is obtained by first establishing the height of the kitchen baseboard.
E.g.: for a **100 mm** high baseboard, the maximum height of the panel is **720 mm**. If the height of the baseboard must be increased, the height of the wooden panel must be reduced.
4. Place the template of the inner side of the panel and match the height of the baseboard with the lower edge of the panel using the graduated scale. Make sure the template is horizontally centred with reference to the vertical lines marked at the ends.
5. After placing the template in the correct position, trace the positions of the following holes, pushing in with the tip of your pencil:
 - a. holes for the hinges and hinge screws
 - b. holes for fixing the metal plate (if the magnetic lock is used), or the hook for the push-pull lock (**fig. A - B**)

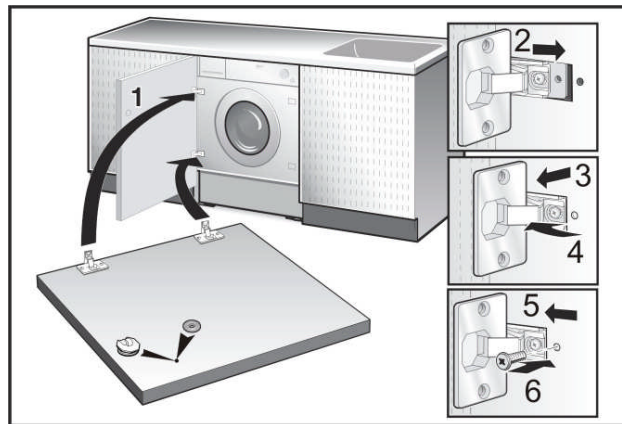
3.7.3 Applying the panel elements and fixing the panel



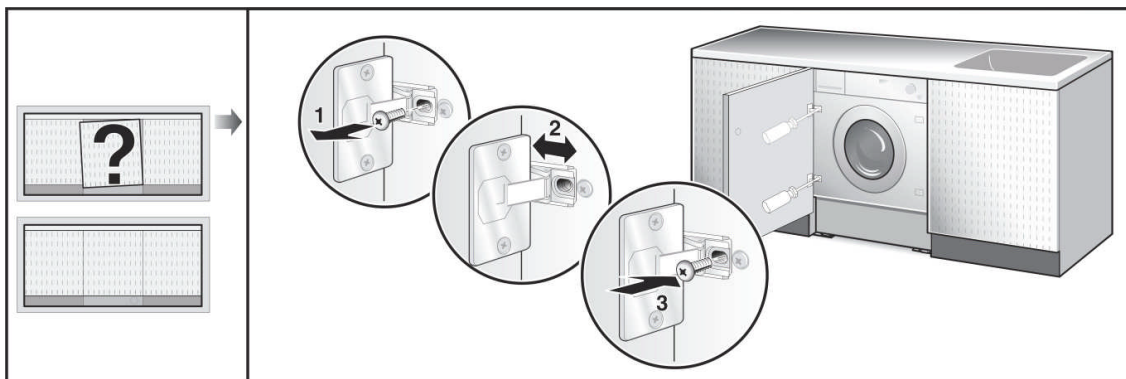
1. Drill holes in the furniture door for the hinges and the closing hook, using a pedestal mounted drill and a suitable 35mm furniture drill bit, drill 4 number 13mm deep holes into the furniture door (Care must be taken not to exceed 13mm or the door fascia could be damaged). Please note that if the magnetic door catch is required then a small pilot hole is all that is needed (2mm).
2. The 13 mm depth of the 2 mm holes, for fixing the hinges and a metal plate for the magnet lock, only applies to the **solid wood** panel. For the **chipboard panel**, simply drill the upper coating
3. Screw the two hinges to the panel (**see below**)
4. Mount the hook for the push-pull lock or the metal plate for the magnet lock on the side opposite the hinges (**see below**).



5. Fix the panel to the washing machine following the instructions shown below



3.7.4 Adjusting the hinges



If, after applying the panel to the washing machine, it is slightly inclined or off-centre with respect to the front of the machine, correct its position by adjusting the mobile part of the hinges (**see above**).

3.7.5 Recessing the appliance

Push the washing machine into its recess. Turn the feet to horizontally, level the machine if necessary and lock the counter nut with the relative check nut. To prevent vibrations from the machine from being transmitted to the surrounding furniture, check that the sides and top of the appliance are unable to touch the furniture itself. **There must be a space of at least 2mm all around.** The rear part of the machine must also remain some distance away from the back wall. If the recessing cavity is higher than 820mm the opening between the floor and sides of the machine (when this is installed at the end of a line of furniture), must be completely closed in compliance with the relative safety provisions.

The covering must make it impossible for users to touch live parts of the electrical system and must require tools in order to be removed.

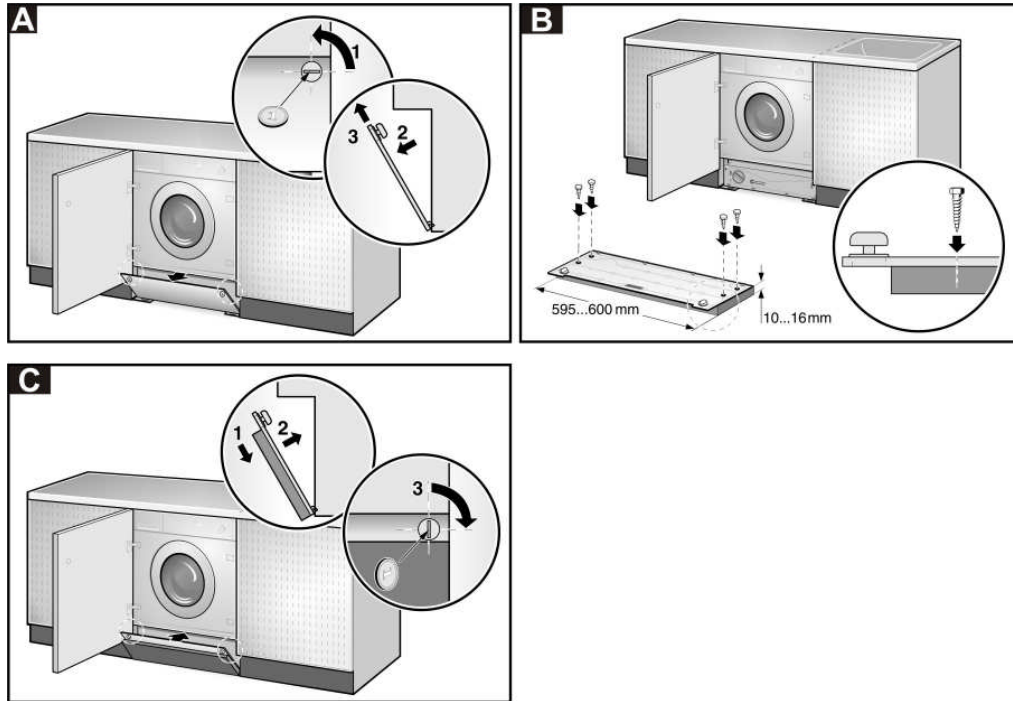
Our company declines all responsibility for damages caused by failuresto comply with these safety provisions.

3.7.6 Fitting the plinth

The base plinth for kitchen furniture must be removable in the area in front of the washer dryer to allow access for routine maintenance of the drain pump if it becomes clogged with buttons, fasteners, or similar objects, and for our engineers to be able to remove the washer dryer for service.

Please note: our engineers will not remove plinths that have been fixed into position by glues or mastics, or where removal could cause third-party damage.

If a plinth is fitted directly onto the washer dryer then it must be done so with four screws inserted into the four pre-set holes



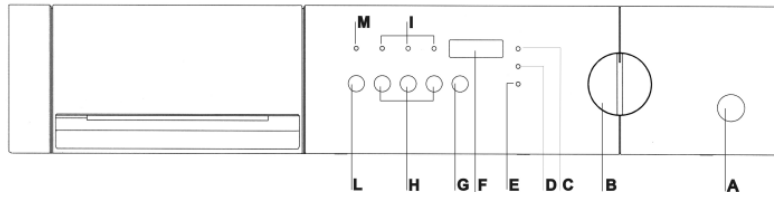
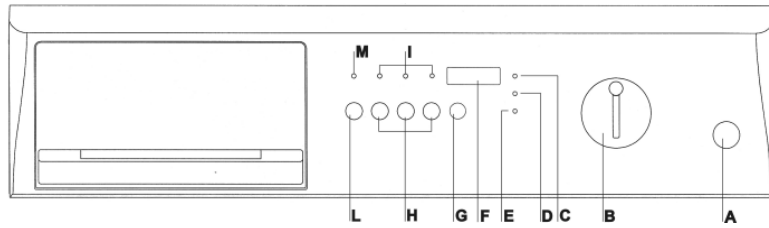
Application of the plinth to the furniture must not involve elimination or modification of the washing machine plinth. Owing to safety reasons, this may not be removed. It must absolutely remain intact and fixed to the washing machine.

4. DESCRIPTION OF CONTROLS

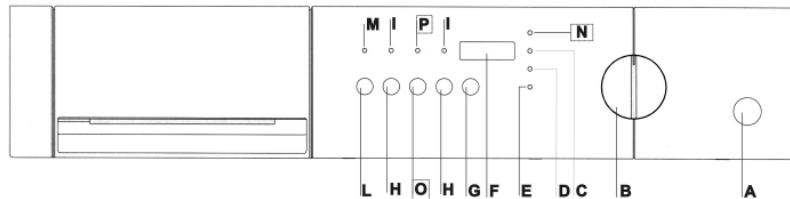
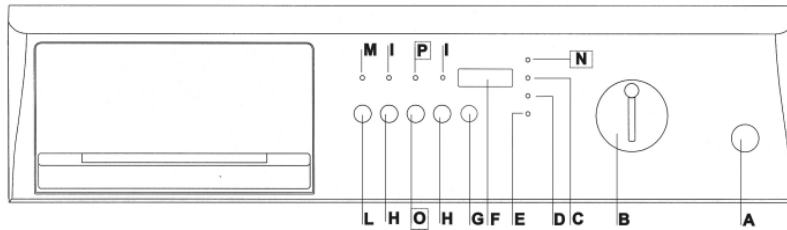
4.1 CONTROL PANEL

All the commands and controls of the appliance are assembled together on the front panel.

Models without delayed start option



Models with delayed start option



Description of controls

A	Open door button
B	ON-OFF and programme selection knob
C	Time remaining shown on display LED
D	Spin speed shown on display LED
E	Heating phase LED
F	Display
G	Select spin speed button
H	Options buttons
I	Options enabled LED's
L	Start-Pause button
M	Start-Pause button LED
N	Delayed start time shown on display LED
Q	Select delayed start button
R	Select delayed start button LED

A	Open door button	Press the button to open the door . Chapter 5 – Washing instructions – explains how the door works and how to use it.
B	ON-OFF and washing programme selection knob	<p>This knob lets you:</p> <ul style="list-style-type: none"> • switch the machine on and off by moving it in either direction from the OFF position (knob indicator vertical) • select washing temperatures within the various fabric sectors by turning it in both directions <p>The knob does not move while the programme is running. The programme is electronically controlled by the machine.</p>
C	Time remaining shown on display LED	This LED indicates that the display is showing the total duration of the selected programme before the programme starts, and the time remaining while the programme is running.
D	Spin speed shown on display LED	This LED indicates that the display is showing the maximum spin speed for the selected programme. It stays on while spin speed is being selected with the relative button.
E	Heating phase LED	During the heating cycle, this LED indicates that the programme is in the washing water heating phase.
F	Display	<p>The display shows the following information:</p> <ol style="list-style-type: none"> 1. time remaining for the selected programme, given hours/minutes. The stated value is an estimate based on the machine's normal operating parameters (size of load, incoming water temperature, etc.). The program time may therefore be a few minutes longer or shorter than stated here. 2. delayed start (for models featuring this option), given in hours/minutes. When the time remaining before the programme starts is less than 60 minutes, this information is given in minutes/seconds. 3. spin speed 4. cycle pause - flashing STOP 5. end of cycle - END 6. error codes <p>To find out which of the first 3 pieces of information are shown on the display, check which of the LED's, C, D, or N (the letter for models featuring the delayed start option) is lit.</p>
G	Select spin speed button or stop with tub full	<p>Press the button repeatedly to select the required spin speed. The following spin speeds are available:</p> <ul style="list-style-type: none"> • <i>0000</i>: spin disabled and stop with tub full. The machine does not perform the final spin and ends the washing programme with water in the tub. To drain the water, see the explanations shown in paragraph 5.14 • <i>from 600 rpm to the maximum speed indicated for the model</i>: for cotton and coloured programmes, speed increases by 100 rpm starting from 600 rpm up to the maximum speed indicated for the model • <i>from 600 to 900 rpm</i>: for synthetics, delicates and woollens programmes, speed increases by 100 rpm starting from 600 rpm up to 900 rpm.

H Options buttons

The options that may be available on the washing machine are shown below.

Quick wash Button

This button reduces the overall duration of the washing cycle. This option is used to wash small loads or less dirty washing in less time. The bleach stage is skipped when the Quick Wash button is pressed (for models with bleach function).

Easy-iron button

This option reduces creasing on garments at the end of the programme. The machine performs a more delicate spin cycle and moves the garments at the end of the programme. Spin speed for all programmes is 600 rpm.

I Options enabled LED's

These LED's light up when the relative option button is pressed and indicate that the option has been selected. They remain on until the machine switches off or a different selection is made.

L “Start/Pause” button

Press this button to start the selected washing programme. During washing, press the “Start/Pause” button for about 3 seconds to pause the washing cycle. During the pause, the “Time remaining” Led flashes and STOP appears on the display. To resume the washing cycle from where it left off, simply press the “Start/Pause” button again.

M Start-Pause button LED

This LED lights up when the washing cycle starts (Start-Pause button pressed) and remains on until the end of the programme.

N Select delayed start button*

Press this button repeatedly to select after how many hours you want the selected washing/drying programme to start. The default value is 0 hours 0 minutes and each time the button is pressed it increases by 60' up to 12h and by 120' for the following 12 hours, up to 24 hours.

O Select delayed start button LED*

The LED lights up while the delayed start time is being selected and remains on until the programme starts.

P Delayed start time shown on display LED*

This LED indicates that the display is showing the selected delayed start time.

* Only for models featuring the delayed start option

4.2 DETERGENT TRAY


This is located to the left of the control panel. Pull it out to open.

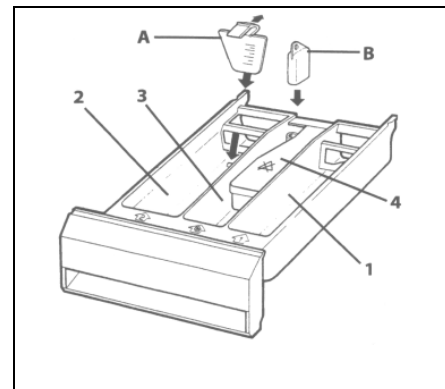
The tray comprises four compartments which are marked as follows

“1”: pre-wash detergent

“2”: main wash detergent

“” or “3”: fabric softener, starch, etc. (treatment products).





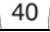
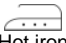

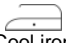
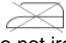
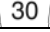









Compartment “4” is used for bleach. If there is a cover marked , this means that bleach cannot be used with this model of machine. If bleach can be used with the machine, there is no cover.



5. WASHING INSTRUCTIONS


5.1 PREPARING THE WASHING

1. Separate the washing according to the type and colourfastness of the fabrics.
2. Wash whites and coloureds separately. Wash new coloured garments separately for the first time. A label is normally applied to garments giving information on how to clean them. A brief description of these labels is shown below.

WASHING		BLEACHING			
 90	Machine wash at max. 90°C	 Bleaching allowed		 Do not bleach	
 60	Machine wash at max. 60°C				
IRONING					
 40	Machine wash at max. 40°C	 Hot iron	 Warm iron	 Cool iron	 Do not iron
 30	Machine wash at max. 30°C				
DRY CLEANING					
 60	Machine wash, delicate cycle at max. 60°C	 Any solvent	 Any solvent except trichloroethylene	 Petroleum solvent and R113	 Do not dry clean
 40	Machine wash, delicate cycle at max. 40°C				
 30	Machine wash, delicate cycle at max. 30°C				
	Hand wash				
	Do not wash				

Attention!

- Do not wash unhemmed or torn garments as they may fray.
- Foreign bodies may damage garments or machine components. Therefore, empty all pockets and turn them inside out, remove rollers from curtains or put them in a string bag.
- Put very small articles (belts, handkerchiefs, socks, bras with stiffeners, etc.) into a white canvas bag. Close push buttons and zips and sew on dangling buttons.
- Modern detergents and correct washing temperatures are generally sufficient to remove stains from fabrics. However, some stubborn stains, such as grass, fruit, egg, blood, rust and biro, should be pre-treated before washing. **Depending on the type of fabric, many stain removers can be found in the shops. Stains should always be cleaned or diluted immediately as the older they get, the more difficult they are to remove.**
- **Garments may be damaged if fabric care symbols are not observed.**

Wool – Only pure wool, identified by  or with the label <<shrink-proof machine washable and dryable>> can be machine washed with the specific programme, other types of wool should be hand-washed or dry-cleaned.

5.2 OPENING THE DOOR

The machine is fitted with a safety device that prevents the door from opening while it is working.

1. **Before opening the door, wait 1 or 2 minutes after the programme ends (“End” LED on)** to allow the safety device to disengage.
2. **Make sure there is no water in the tub and that the drum is not moving.** Open the door by pressing the “Open door” button on the front panel and pulling it open.

Attention!

- If the washing programme is interrupted, you will have to wait from 3 to 15 minutes, depending on the temperature of the water, before the door opens.

Attention!

The water may still be boiling if the washing cycle was performed at high temperatures. If there is still water inside the drum, do not open the door!

5.3 PREPARING THE WASHING

Where possible, **save electricity by washing full loads divided by type of fabric.** Introduce loose washing and alternate large items with small ones. For the first few times, weigh the loads of washing and then rely on your judgement. Average weights of common garments are shown below:

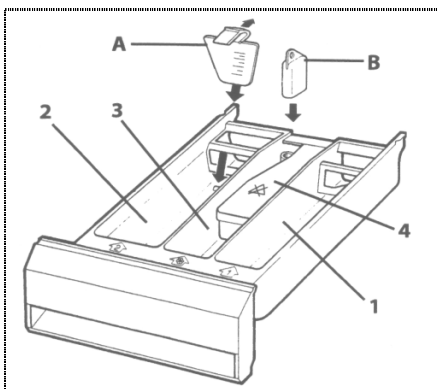
5.4 LOADING THE WASHING

1. Open the door and load the washing taking care to distribute it uniformly, loosely and not packed into the drum; alternate large items with small ones if possible.
2. The washing machine described in this manual can be **loaded with up to 5kg** of washing. Heavier loads will lead to unsatisfactory washing results and may cause the machine to work incorrectly.
3. **To save energy, wash full loads** divided by type of fabric, according to the quantities indicated in the "Programmes chart" supplied with this manual.
4. Close the door by pressing it against the body of the appliance until you hear a click. Make sure no garments have got caught between the door and the rubber gasket.

Attention!

- If the door is not closed properly, a safety device prevents the washing machine from working.
- **Do not use more than the recommended amount of detergent: too much may deteriorate washing results.**


5.5 ADDING DETERGENT AND ADDITIVES



Follow the instructions shown in the "Programme Chart" provided together with the manual and add detergent and any additives to the relative compartment before starting the programme.

Pour the pre-wash powder detergent into the compartment marked "1".

Pour main wash detergent into compartment "2". Machine accessories include a red insert "A" that can be placed inside compartment "2" to allow liquid detergent to be used. The additives are automatically introduced into the tub during final rinsing.

Pour liquid additives such as starch and fabric softener into "3", marked with .

If bleach can be used with the machine (no cover marked with ) add bleach to compartment "4" if you wish.

The level of the liquids must not exceed the maximum limit, otherwise the trays will be emptied too soon.

Before pouring thick additives into the tray, dilute them with a little water to prevent them from obstructing the trap.

Only use foam-controlled detergent suitable for use in washing machines.

Determine the quantity of detergent according to the hardness of the water, and the type, quantity and dirtiness of the washing.

This will allow you to obtain the required effect using as little detergent as possible.

Detergent packs indicate the quantities to use according to 4 levels of hardness and for normally dirty loads of 4-5 kg.

Ask your local water board to tell you how hard your water is.

Water hardness

Hardness level	French degree fH	German degree dH
Soft	Up to 15°	Up to 8°
Moderately hard	15° - 25°	8° - 14°
Hard	25° - 40°	14° - 22°
Very hard	Over 40°	Over 22°

5.6 DOSING POWDER DETERGENTS

Normally dirty washing

1. Choose a programme without prewash.
2. Pour the total quantity of detergent indicated on the packs into compartment "2" of the detergent tray.

Very dirty washing

1. Choose a programme with prewash.
2. Add $\frac{1}{4}$ of the recommended quantity of detergent into compartment "1" of the detergent tray and $\frac{3}{4}$ of the detergent into compartment "2".

Attention!

- If there are no dosage indications for delicate synthetics, add from $\frac{1}{2}$ to $\frac{2}{3}$ of the recommended quantity for resistant cottons.
- For the wool programme, only use neutral detergents for woollens.
- Base your doses according to the detergent manufacturer's recommendations.

5.7 DOSING LIQUID DETERGENTS

1. Pour the recommended dose into the batcher supplied with the liquid detergent and place it inside the drum; otherwise, pour it into compartment "2" of the detergent tray after fitting the relative red insert "A" (see paragraph 5.5).
2. The scale on the red insert will help you to use the right quantity of liquid detergent.

Attention!

- Liquid detergents can be used according to the manufacturer's recommended dose **only for the main washing cycle, that is, in all programmes without prewash.**
- When compartment "2" is used for powder detergent, the red insert "A" must be removed.

5.8 SCALE-REMOVERS




Scale-removers can be introduced into compartments "1" and "2" according to the manufacturer's indications. First, add the detergent and then the scale-remover.

5.9 SWITCHING ON THE MACHINE AND SELECTING THE WASHING PROGRAMME

To switch on the machine and select programmes, proceed as follows:

1. Turn the programme knob in either direction.
2. Select the washing temperature, within the sectors marked on the front panel by the following words:
 - **Cotton, coloureds**
 - **Wool**
 - **Synthetics, delicates**

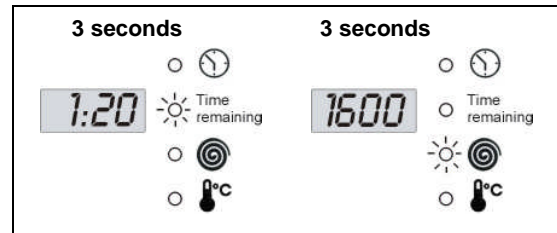
The washing machine has the following **basic washing programmes** which, by adjusting the temperature and using the various button functions, allow a wide range of programmes to be set for all requirements.

<p>Intensive washing programme for resistant <u>cotton</u>, <u>coloured</u> or <u>hemp</u> fabrics.</p>	
<p>Delicate washing programmes for delicate <u>artificial synthetic fibres</u>, <u>blends</u> or <u>linen</u> fabrics. They prevent the formation of creases that are difficult to remove during ironing.</p>	
<p>Wool programme only for garments marked "<u>pure wool</u>" washable, treated, shrink proof. Other types of wool should be hand washed or dry-cleaned.</p>	

To select programmes according to the type of fabric, consult the "Programme chart" supplied together with this manual.

Display information

When the machine is switched on, the display visualises the duration (hours/minutes) and maximum spin speed envisaged for the programme. These two parameters are displayed alternately for 3 seconds each, together with their relative LED's, until the selected programme starts.



Attention!

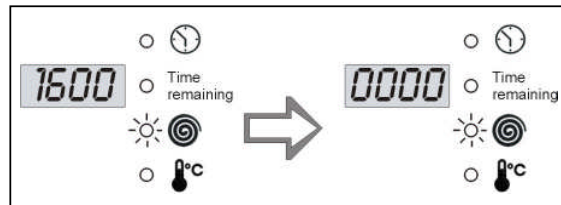
- The following partial washing programmes can be set using the programmes knob:
 - Rinse with additive
 - Drain and spin
 - Fabric softener
 These partial programmes are inside the Cotton, Synthetics and Wool sectors, except for the drain and spin programme (Drain I[⊙]).
- If the indicated temperature shows 0°, this means that the programme performs a cold wash cycle. The same cold wash is also performed by the **Hand wash** programme in the Wool sector.
- The fabric treatment labels show which washing temperature must be set.
- If various garments in the same load require different washing temperatures, choose the lowest washing temperature of all.**
- If the laundry is only slightly dirty and does not need the bleaching effect of high temperatures, **a lower temperature can be chosen to save power.** In spite of the low temperature and consequent saving of electricity, an automatic time control keeps the duration of the main washing unvaried compared with that of a high temperature programme. It is therefore possible to successfully wash **normally dirty laundry at lower washing temperatures** than the maximum temperatures shown on the fabric care labels.

5.10 MODIFYING STARTING PARAMETERS

5.10.1 SPIN SPEED

Press the select spin speed button (⊙), the relative LED lights up and the display visualises the maximum speed envisaged for the selected washing programme.

Press the button repeatedly. Speed decreases by 100 rpm every time until the spin cycle reaches 0 rpm and is disabled.



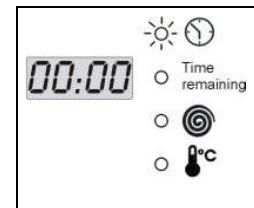
5.10.2 OPTIONS

Use the options buttons (indicated in chapter 4 – Description of controls, letter H) to enable machine options. A selected option is highlighted by the option LED located above the button in question.

5.10.3 DELAYED START (ONLY FOR MODELS FEATURING THIS FUNCTION)

Press the delayed start button (⌚). The relative LED located above the button lights up. The display visualises the time remaining (hours/minutes) before the selected washing programme starts: the display initially shows 0 hours 0 minutes for all programmes.

Press the button repeatedly. The Start delay increases by 30 minutes each time it is pressed for the first 12 hours. After that it increases to 60 minutes up to 24 hours.

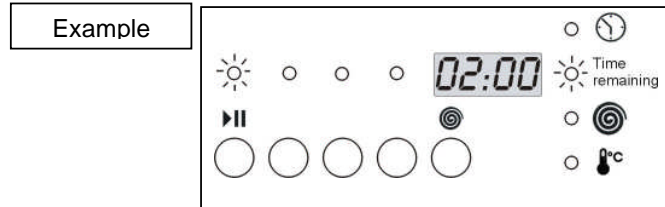


While selecting the delayed start time, you can reset the timer by pressing the button for at least 3 seconds.

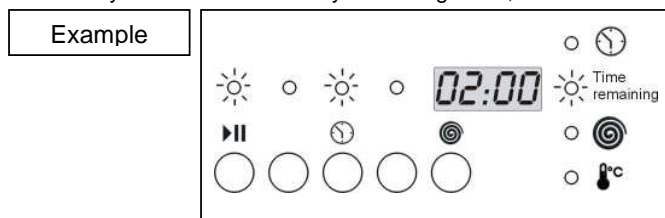
5.11 STARTING THE WASHING PROGRAMME

1. Before starting the selected programme, carefully close the door, open the water tap and add the detergent and additive
2. Press the "Start-Pause" button. The LED located above the Start-Pause button remains lit throughout the cycle.

After starting, the display shows the time remaining until the end of the programme. The LED remains on throughout the cycle.



If delayed starting has been set (only for models featuring this option), the display visualises the time remaining before the cycle starts. When delayed starting is set, the relative LED flashes on and off.



5.12 INTERRUPTING OR CHANGING THE WASHING PROGRAMME

The washing programme may be interrupted at any time while it is running:

1. press "Start/Pause" for approximately 3 seconds: the display alternates between STOP (for 1 second) and three horizontal lines (for 1 second) and the Start/Pause LED flashes.



The programme can also be stopped by turning the programme/temperature selection knob while the cycle is running.

2. If you wish to change the washing programme, simply select the new programme by turning the programme knob without pausing the machine first. The new washing cycle will be performed starting from the beginning. If the tub is already full of water, the new programme will omit the filling phase.
3. To resume the cycle, press Start-Pause again.

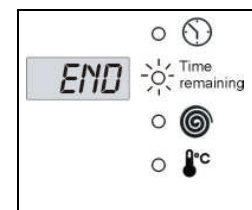
5.13 HEATING PHASE

During the water heating phase of the washing cycle, the heating phase LED (°C) lights up. This lets you know when the washing machine is consuming most power.

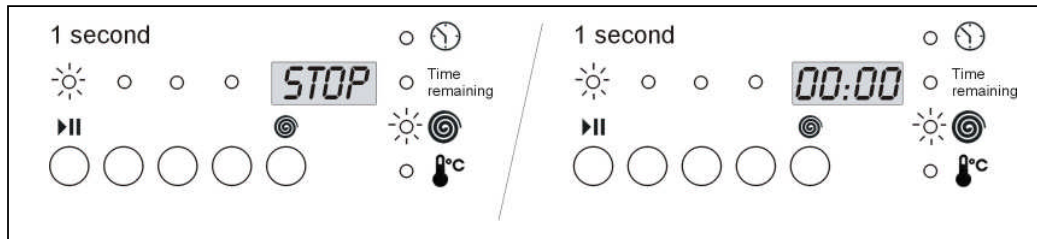
5.14 END OF PROGRAMME

The washing programmes are automatically completed, the display shows END and the "Time remaining" LED lights up.

1. Turn the programmes knob to OFF to switch off the machine.
2. Open the door.
3. Remove the washing from the drum.
4. Leave the door ajar in order to allow the inside of the washing machine to dry.
5. Turn off the water tap.



If the no-spin option was selected during the initial spin speed set up phase and the machine stops with the tub full (spin speed 0), STOP appears on the display at the end of the washing programme, alternating with 0000 (spin speed 0) and the spin LED lights up.



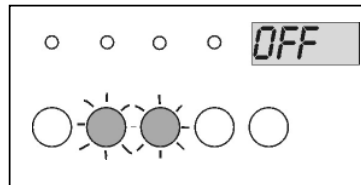
To continue draining and spinning, press the spin select button twice. The machine resumes the cycle by draining the water and spinning.

To select spin speed, press the button until the required speed is displayed. If you wish to drain the water in the tub without spinning, press the spin select button until 0000 appears on the display.

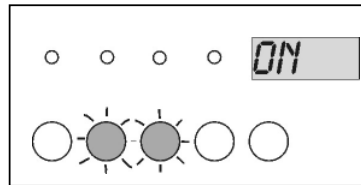
This indicates that the machine will drain the water without spinning.

5.15 END OF PROGRAMME BEEPER

When a washing cycle finishes, the message END appears on the display and a beeper sounds twice. To disable this signal, press the second and third button from the left simultaneously. The message OFF immediately appears on the display to indicate that the beeper has been disabled.



To enable the end of programme beeper, repeat the operation. This time, the message ON will appear on the display.



The appliance is supplied with the end of programme beeper enabled.

6. CLEANING AND MAINTENANCE

Important – Before cleaning or servicing the machine, remove the plug from the socket.

6.1 EXTERNAL CLEANING

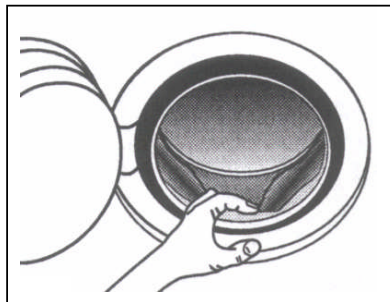
- Regular and constant cleaning will keep your appliance looking like new.
- Clean the outer surfaces with soap and water and then dry thoroughly with a soft cloth.
- Clean parts in plastic with a damp cloth.
- Do not scratch with sharp objects and do not use solvents or abrasive products as these will damage the surface.
- **For reasons of safety, never spray water onto the appliance.**

6.2 CLEANING THE DRUM

- Remove any rust stains from the drum with a special cleaner for stainless steel or, for particularly stubborn stains, with extra fine abrasive paper.
- To remove scale from the washing machine, only use branded scale removers with anti-corrosion agents for washing machines.
- Follow the manufacturer's instructions and recommended quantities to the letter.
- **After removing scale or rust from the drum, perform a few rinse cycles to eliminate acid residues as these may damage the machine. Never use detergents containing solvents. These may form vapours that may catch fire and explode.**

6.3 CLEANING THE DOOR GASKET

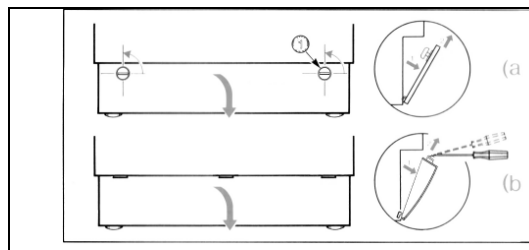
Periodically check that no clips, buttons, nails or needles have got caught in the folds of the door gasket.



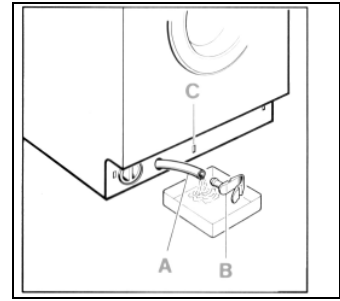
6.4 CLEANING THE DRAIN PUMP

Only clean the drain pump if it is obstructed by buttons, hairpins and the like and the water cannot drain. In this case, proceed as follows.

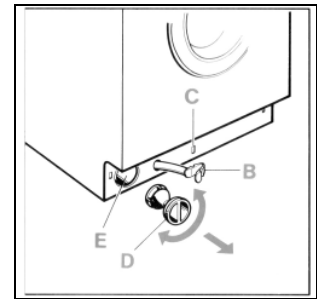
1. **Remove the plug from the socket to disconnect the machine from the electrical power supply.**
2. Depending on the model, proceed as follows:
 MODEL A – Use a coin to turn the plastic buttons fixing the cover to the base plate anti-clockwise.
 MODEL B – Insert a small screwdriver into the slots in the base plate cover, then gently prise up to release the upper part of the cover.
 Pull the cover slightly forwards and then up to remove it completely.



- Pull out the drain hose "A".
Attention: if the hose is hot it means the water is hot or boiling. Place a tray on the floor and remove the plug "B" to drain the water. Depending on the quantity of water, it may be necessary to empty the tray several times.
When no more water comes out, push the hose back in and screw back the plug "B".



- Unscrew the cover of the pump "D" by turning it anti-clockwise.
Clean the pump body and remove any foreign bodies.
Check the inside "E" and make sure the impeller turns freely. If there are any foreign bodies, remove them.

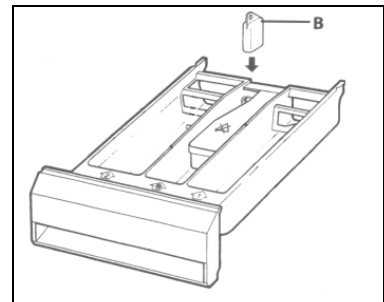


- Screw the pump cover back on.
Fix the drain hose by snapping the plug into place «C».
Depending on the model, put back the cover as follows:
MODEL A – Insert the lower part of the cover first. Then secure it by turning the plastic buttons a quarter turn clockwise.
The slots in the buttons must be horizontal.
MODEL B – Insert the lower part of the cover first and then push it towards the base plate until it clicks into place.

6.5 CLEANING THE DETERGENT TRAY

Keep the detergent tray free from scale.
To simplify this operation, completely remove the detergent tray (pull it out as far as it will go, lift it slightly and then pull fairly vigorously).

Remove the traps «B» (there are two traps if the machine is not fitted with a cover for the bleach compartment) and clean with hot water.
Put back the traps and remove any residues of detergent before putting the tray back.



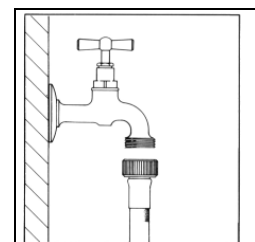
6.6 CLEANING THE WATER INLET FILTER

The machine is fitted with a filter for protecting the water inlet valves.

The filter is fitted the gas thread of the inlet hose connected to the tap

Clean the filter if no water or insufficient quantities of water enter the washing machine.
To do this, proceed as follows:



- Remove the plug from the socket to disconnect the machine from the electrical power supply.
- Turn off the water tap.
- Unscrew the inlet hose from the tap.
- Remove the filter from the inlet hose gas thread.
- Clean the filter with water and a brush.
- When screwing the inlet hose back on to the tap, make sure the filter is correctly positioned.



7. TROUBLESHOOTING

This product complies with current safety regulations governing electrical equipment. For safety reasons, all technical inspections or repairs must be performed by qualified technicians in order to prevent hazardous situations for users.

If the machine does not work, before calling the Service Centre and spending money unnecessarily, check that the operations indicated in this [troubleshooting table](#) have been performed.

- | | |
|---|--|
| 1 The machine does not start | Check that: <ul style="list-style-type: none"> - the plug is correctly fitted into the socket - the door is securely closed - the "Start-Pause" button has been pressed. |
| 2 The tub does not fill with water | Check that: <ul style="list-style-type: none"> - the plug is correctly fitted into the socket - the door is securely closed - the water tap is open - the water inlet filters are not clogged. Clean them as indicated in paragraph 6.5. - the water inlet tube is not jammed or bent |
| 3 No water appears to be in the drum | No fault.
The water level is lower than the glass of the door because the new machines use less water though obtaining the same washing and rinsing results. |
| 4 The water does not drain | Check that: <ul style="list-style-type: none"> - the drain hose is not twisted - the drain pump is not clogged. Clean it as indicated in paragraph 6.3. |
| 5 The water does not drain after final rinsing in delicates and woollens washing programmes | This is envisaged by the washing programme (if the no-spin and stop with tub full   option has been selected) to prevent fabrics from creasing.
To drain the water, proceed as described in the "End of programme" section, paragraph 5.14. |
| 6 The machine fills with water and drains continuously | Make sure the end of the drain hose is not too low. |
| 7 Strong vibrations during spinning | Check that: <ul style="list-style-type: none"> - the machine has been properly levelled as described in paragraph 3.2 - the machine is not too close to walls or furniture - the internal moving assembly has been released as described in paragraph 3.1 |
| 8 Too much foam forms and escapes from the tray | Check that: <ul style="list-style-type: none"> - the detergent is suitable for automatic machines and is not for hand washing - no more than the quantities indicated in the manual are used |
| 9 Water on the floor | Check that: <ul style="list-style-type: none"> - the unions of the water inlet hose are not loose - the end of the drain hose has not moved out of place. |
| 10 Not all the fabric softener enters the machine or too much water remains in the compartment | Make sure that the traps in the detergent tray are correctly positioned and are not clogged. Clean them as indicated in paragraph 6.4. |

- 11 **The machine does not spin** The unbalanced load sensor has triggered because the washing is not uniformly distributed inside the drum. If the washing is wet at the end of the cycle, distribute it well inside the basket and repeat just the spin cycle.

- 12 **Draining water from the drum** In the event of a power failure or a fault in the appliance, the water inside the drum can be drained as described in paragraph 6.3





- 13 **The washing has not been correctly spun** Large items have rolled up and are not uniformly distributed inside the drum. Always wash large items together with small ones.

- 14 **Residues of detergent on the washing** Many phosphate-free detergents contain substances that are difficult to dissolve in water.
Select the Rinse programme or brush the washing.

- 15 **Washing results are unsatisfactory**
 - Too little detergent or an unsuitable detergent may have been used.
 - Stubborn stains were not pre-treated
 - The wrong temperature was selected
 - The drum was overloaded






















ERROR SIGNALS

In the event of faults, the machine will display an error code.

<i>Error code</i>	<i>Problem</i>
	Door not closed properly. Close it.
	Aquastop. Contact the nearest Service Centre after disconnecting the machine from the electrical power supply and closing the water tap.
	No water for washing. See point 2 on the troubleshooting table.
	The water does not drain. See point 4 on the troubleshooting table.

For all other error codes, contact the nearest Assistance Centre after disconnecting the power supply and closing the water tap.

8. CONTROL PANEL SYMBOLS

PROGRAMS		OPTIONS		OTHER SYMBOLS	
					FABRIC CONDITIONER
	HAND WASH	 	NO SPIN OR STOP WHIT FULL TUB		OPEN DOOR
	PRE-WASH		DELAY TIMER		START-PAUSE
	RINSES				START
	DRAIN AND SPIN				WASH
SECTION			QUICK WASH		END
	COTTON AND COLOURED				HEATING
	WOOL		SPIN		TIME REMAINING
			EASY-IRON		
	SINTHETICS AND DELICATES				