

# Speed Queen®

## Multi-Housing

Quantum™ System  
Commercial Washers & Dryers  
Horizon® Line

### Coin

- SFNLCF S Front Control Washer
- SFNLCFJ Front Control Washer (Supply Injector)
- SDELFCFG Electric Front Control Dryer
- SDGLFCFG Gas Front Control Dryer
- STELCF S Electric Stack Washer/Dryer
- STGLCF S Gas Stack Washer/Dryer

### Card

- SFNL YFS Front Control Washer
- SDELYFG Front Control Electric Dryer
- SDGL YFG Front Control Gas Dryer
- STELYFS Electric Stack Washer/Dryer
- STGL YFS Gas Stack Washer/Dryer



Commercial Built to Last Longer

## The Quantum™ System

The community laundry room as an efficient amenity? It's a novel concept, but so is Speed Queen's Quantum™ system. This cutting-edge microprocessor control gives building owners and property managers unparalleled ability to reduce water and energy costs through advanced programmability. Speed Queen laundry service providers deliver further value with Quantum's™ management capabilities, which offer automated secured audit reports on machine use and collections, helping them better manage this aspect of their business.

Where Quantum™ truly excels is in creating an amenity to help attract and retain residents. Not only does the control work in concert with Speed Queen washers and dryers to help residents complete their cycles quickly, it also offers a variety of features and premium wash settings that enable them to tailor cycles to their specific needs.

Quantum™ is the total package, offering the options and wash quality residents demand along with the management tools for tracking machine activity by location and expediting service to machines.



## Quantum™ PDA and Software

- Secured automated tamper proof accountability system.
- Tracks coin or card transactions.
- Downloads data from machine in three seconds.
- Windows mobile PDA for auditing and programming.
- PDA functions:
  - ~ Collect data
  - ~ Machine activity
  - ~ Maintenance – service and diagnostics
  - ~ Programming – machine cycles

## EcoWatersaver™ Front Load Washer

- Low water and energy consumption.
- ENERGY STAR® qualified.
- CEE tier three rating.



## Horizon® Quality Features

- The “Big Load Door” opening is an extra wide 15.5" for easy loading and unloading of clothes.



- See-through door convenience with 180° swing for easy loading and unloading. The hinge is a robust 10" steel piano style to maintain door alignment.
- Complies to all ADA guidelines for front reach.
- Frontmount supply dispenser automatically adds detergent, bleach and softener.



- Extra-large 18 lb capacity wash cylinder with three full-length baffles.
- High speed extract of 1,000 RPM final spin exerts 300 G-Force to maximize moisture removal from clothes.
- Freestanding design features four large automotive size shocks for installation on most floor levels or types.



## High Efficiency Drying Convenience

- A wide door opening of 2.06 sq. ft. is the industry's largest, offering residents the convenience of easy loading and unloading.
- Durable galvanized steel cylinder with extra-large 18 lb capacity. The gentle tumble action minimizes wrinkles.
- Door is reversible for installation flexibility (solid door models only). The up-front lint filter is easy to clean and secured.
- Quiet, efficient blower system with superior airflow of 220 cu. ft. per minute for fast drying and lower operating costs.
- Efficient dryer heating with 25,000 Btu (gas models) and 5,350 Watts (electric models).
- Extended safety tumble.



## Stack Washer/Dryer Saves Space and Energy

- This innovative stacked concept takes up half the floor space that a conventional washer and dryer do when situated side by side.
- The freestanding softmount design can be installed on most floor types or levels.
- Both the washer and dryer have the same hookups and connections as a standard washer and dryer, so no additional plumbing or electrical change is needed.



Quantum™  
Washer Control



Quantum™  
Dryer Control

## Control Features

- Extra-large four-digit display of price and time.
  - ~ Counts down vend price to start and cycle time.
- Safety door lock initiated after vend start.
- LED cycle indicators.
- Push pad selector with sound annunciator.
- Cycle selections for Normal, Permanent Press, and Delicate with settings for Hot, Warm or Cold water fill.
- Cold water rinses to save on energy consumption.
- Premium wash cycle programming for bonus revenue streams. Options could include:
  - ~ Heavy soil level prewash, extra wash and rinse time.
    - Default: \$2.00/Bonus: \$0.50/Total vend: \$2.50
  - ~ Medium soil level - with extra wash and rinse time.
    - Default: \$2.00/Bonus: \$0.25/Total vend: \$2.25
  - ~ Light soil level.
    - Default: \$2.00
- Dryer control can be programmed with minutes and seconds countdown.

## Programming Features

- Multi-level vending. Each cycle, temperature, soil level can be vended separately, 27 possible pricing combinations.
- Vend price - default \$2.00 (\$0.25 increments).
- Drying time and temperatures.
- Premium wash cycle programming for bonus revenue streams.
- Dry times top-off option.
- Time-of-day price promotion.
- Two-way communication by infrared technology.

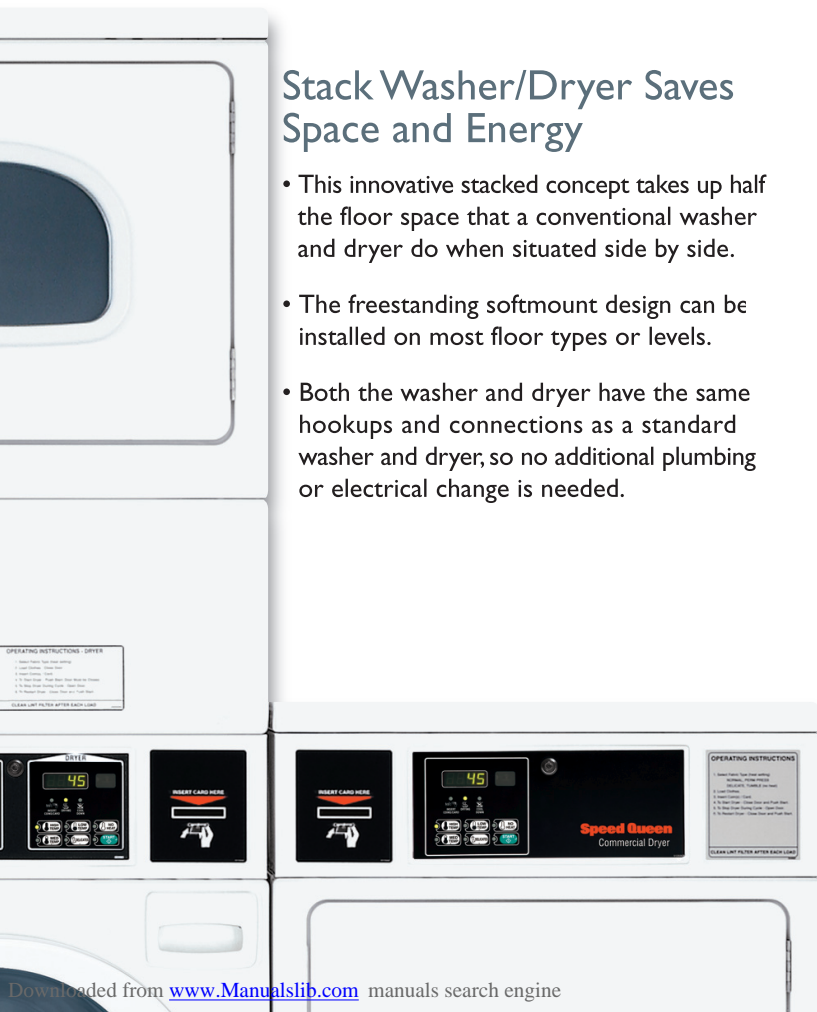
## Activation Features

### Coin Models

Coin models are equipped with a validator for coins. (As shown on front cover)

### Card-Ready Models

Card-ready models are activated by smart card reader.



# Washer & Dryer Specifications

	Washers	Dryers	Stack Washer/Dryers
	SFNLCFS, SFNLCFJ SFNLYFS	Electric: SDELCFG, SDELYFG Gas: SDGLCFG, SDGLYFG	Electric: STELCFS, STELYFS Gas: STGLCFS, STGLYFS
<b>Basket/Cylinder Volume</b> - cu. ft. (liters)	2.84 (80)	7.0 (198)	2.84 (80)/7.0 (198)
<b>Width</b> - in (mm)	26 7/8" (683)	26 7/8" (683)	26 7/8" (683)
<b>Depth</b> - in (mm)	28" (711)	28" (711)	28" (711)
<b>Height*</b> - in (mm)	43" (1092)	43" (1092)	76 5/8" (1946)
<b>Weight</b> - lb (kg)	250 (113)	Electric: 150 (68) Gas: 155 (70)	Electric: 360 (163) Gas: 365 (166)
<b>Shipping Weight</b> - lb (kg)	270 (123)	Electric: 160 (73) Gas: 165 (75)	Electric: 390 (177) Gas: 395 (179)
<b>Cycle Time</b> - minutes	27	45	27/45
<b>Motor HP</b> (Capacitor Start and Thermal Protected)	1 HP, 750 W	1/3 HP, 5.5 amps	1 HP, 750 W 1/3 HP, 5.5 amps
<b>Water Consumption</b> - gal. per cycle	12.8	N/A	12.8
<b>Water Factor</b> - gal. per cu. ft.	4.5	N/A	4.5
<b>Modified Energy Factor</b>	2.24	N/A	2.24
<b>Hot Water Usage</b> - gal. per cycle	1.59	N/A	1.59
<b>Water Pressure</b> - psi (bar)	Pressure fill – 20 to 120 (1.4/8.3)	N/A	Pressure fill – 20 to 120 (1.4/8.3)
<b>Spin Speed</b> - RPM	500, 650, 1000	N/A	500, 650, 1000
<b>Cycle/Temperature</b>	Normal Permanent Press Delicate Hot Warm Cold	High 160° Medium 155° Low 145° Delicate 115° No Heat	High 160° Medium 155° Low 145° Delicate 115° No Heat
<b>Electrical Specifications and Circuit Requirements</b>	120/60/1-15 amp	Electric: 120/240/60/1-30 amp 120/208/60/1-30 amp Gas: 120/60/1-15 amp	Washer & dryer have separate hookups. See electric specification for washer & dryer
<b>Motor</b>	Inverter Drive	60 Hz: 1725	Inverter Drive
<b>Btu per Hour</b>	N/A	25,000 (6300 kcal)	25,000 (6300 kcal)
<b>Heating Element**</b>	N/A	5350 W, 240 V 4750 W, 208 V	5350 W, 240 V 4750 W, 208 V
<b>Type of Gas</b> (Gas models only)	N/A	Factory-equipped natural/ mixed gas. Convertible to LP gas.***	Factory-equipped natural/ mixed gas. Convertible to LP gas.***
<b>Utility Connections</b> - in (mm)	N/A	Gas: 3/8" NPT (9.5)	Gas: 3/8" NPT (9.5)
<b>Air Outlet Diameter</b> - in (mm)	N/A	4" (102)	4" (102)
<b>Exhaust Airflow†</b> - cfm (liters/sec.)	N/A	220 (105)	220 (105)
<b>Maximum Exhaust Static Back Pressure</b>	N/A	0.6" W.C.	0.6" W.C.
<b>Agency Approval</b>	cULus	Electric: cULus Gas: CSA Star	Electric: cULus Gas: CSA Star
<b>Activation</b>	Coin/Card-Operated	Coin/Card-Operated	Coin/Card-Operated
<b>Self-Adjusting Rear Legs</b>	No	No	No
<b>Top and Lid Finish</b>	Porcelain	Porcelain	N/A
<b>Colors</b>	White	White	White
<b>Door Type</b>	Window	Solid	Window

\* Heights may vary slightly depending on leveling adjustments.

\*\* Factory equipped 120/240/60/1 - may be field converted to 120/208/60/1 by qualified servicer.

\*\*\* IMPORTANT: Any product revisions or conversions must be made by the Manufacturer's Authorized Dealers, Distributors, or local service personnel.

† Measured at point of exit from dryer.

At Speed Queen, we're so confident that our heavy-duty commercial washers and dryers are Commercial Built to Last Longer, that we're offering the following limited warranty to prove it: Through three years† — Any part of the washer, dryer or stack dryer. Through five years† — The washer transmission assembly, base and cabinet assembly including top, lid and door, against rust from inside out. Lifetime† — The stainless steel washtub.

† Parts only. Labor not included. See Speed Queen Warranty Bond for specifics.

For the most accurate information, the installation guide should be used for all design and construction purposes. Due to continuous product improvements, design and specifications subject to change without notice. The quality management system of Alliance Laundry Systems' Ripon facility has been registered to ISO 9001:2000.

Printed in the U.S.A.

©Copyright 2009 Alliance Laundry Systems LLC