

AKAI

Makes Sense



8kg Front Load Washing Machine

INSTRUCTION MANUAL

MODEL: AK-8KGFLW



Contents

- 03 Important Safety Instructions**
- 07 Product Overview**
- 08 Installation**
- 14 Getting Started**
- 16 Instructions**
- 23 FAQs and Troubleshooting Guide**
- 26 Other Useful Information**

Important Safety Instructions

READ CAREFULLY AND KEEP FOR FUTURE REFERENCE

Read this manual thoroughly before first use, even if you are familiar with this type of product. The safety precautions enclosed herein reduce the risk of fire, electric shock and injury when correctly adhered to. Keep the manual in a safe place for future reference, along with the completed warranty card and purchase receipt. If applicable, pass these instructions on to the next owner of the appliance.

Always follow basic safety precautions and accident prevention measures when using an electrical appliance, including the following:

Pay particular attention to safety advice following the words:

DANGER, WARNING and CAUTION.

These words are used to alert you to a potential hazard that can seriously injure you and others. The instructions will tell you how to reduce the chance of injury and let you know what can happen if the instructions are not followed.

DANGER means that failure to read this safety statement may result in severe personal injury or death.

WARNING means that failure to read this safety statement may result in extensive product damage or serious personal injury.

CAUTION means that failure to read this safety statement may result in minor or moderate personal injury, property or equipment damage.

Electrical safety and cord handling

- **Voltage:** Before connecting and turning on the appliance, ensure the electrical voltage and circuit frequency correspond to those indicated on the appliance rating label.
- **Power supply system:** As the maximum current through the unit is 10A when you are using the heating function, make sure the power supply system (current, power voltage and wire) at your home can meet the normal loading requirements of electrical appliances.
- **WARNING!** Only connect the washing machine to a grounded (earthed) electrical outlet. Do not overload the wall outlet, as overloading can result in fire or electric shock. Insert the power plug securely.
- **Protect from moisture:** To avoid electric shock, fire and malfunction, do not install this machine in a damp place. Do not pull out or insert the plug with wet hands or bare feet. Do not expose the appliance, cord or plug to rain, moisture or other liquid.
- **Power cord:** Do not kink or damage the power cord, and position it out of the way so no one steps on or places anything on the cord or against it.

WARNING! Do not use the machine if the cord or plug is damaged to avoid an electric shock, short circuit or fire. If the cord is damaged, it must be replaced by the manufacturer's service agent or a properly qualified person in order to avoid a hazard.

Important Safety Instructions (Cont.)

- **CAUTION!** Use of a power adaptor or extension cord is not recommended. However, if you must use an extension cord, make sure it is earthed, has been approved and has the same or higher electrical rating (voltage and power) as the product. Arrange the extended cord so that it is not subjected to splashing or ingress of moisture.
- **After use:** Always unplug the appliance and turn off the water after use.
- **Disconnect:** Unplug the washing machine from the power supply before cleaning, servicing, maintenance or moving the appliance. Pull by the plug, not by the cord.
- **Keep openings clear:** Do not insert any objects into ventilation or similar openings.
- **No timer:** The appliance is not intended to be operated by means of an external timer or separate remote control system.
- **RCD:** Unless your home is already fitted with a residual current device (safety switch), we recommend installing an RCD with a rated residual operating current not exceeding 30mA to provide additional safety protection when using electrical appliances. See your electrician for professional advice.

Installation

- **WARNING! This appliance is extremely heavy. Transport with care!** A team lift or mechanical aid is required when moving the machine. Do not hold the washing machine by the door or any other protruding part while lifting or transporting it.
- **Freestanding use only:** This appliance is not to be built in.
- **Do NOT install the appliance:**
 - Outdoors or in a damp or wet environment (such as a bathroom).
 - In areas where caustic or explosive gases are present.
 - Behind a lockable door, a sliding door or a door with a hinge on the opposite side to that of the washer in such a way that a full opening of the washer door is restricted.
- **Installation surface:** This washing machine must be installed on a flat, even and stable ground to avoid overturning during use or maintenance. Do not place it on carpet. If the machine must be positioned on carpet, place a plastic mat underneath the machine and make sure any ventilation openings in the base are not obstructed.
- **Clearances:** Ensure that there is a distance of at least 200mm between the appliance enclosure and any external heat sources, such as appliances containing heating elements.
- **Installation:** Make sure that all water and electrical connections are made by qualified persons only, observing local safety regulations and following the installation instructions in this manual (refer to “Getting Started: Installation”, pages 8–13). Do not use the appliance until it is fully installed.
- **Water connection:** Connect the washing machine to the water mains using new hose sets. Do not reuse old hose sets. The required water pressure is 0.03MPa (min.) to 1.0MPa (max.).
CAUTION! This machine has only one inlet for water (cold). Do not connect it to the hot water supply.

Important Safety Instructions (Cont.)

- **Drainage:** Do not allow the water drained out of the appliance to accumulate.
- **Electrical connection:** During installation, the power cord must not be excessively or dangerously bent or flattened. The plug must be accessible after installation.
- **Ventilation openings:** Do not cover any air inlet or exhaust openings.
- **Misuse:** Improper installation or faulty use may result in the risk of fire, electric shock and/or injury. We accept no liability for any eventual damages or injury caused by improper installation, misuse or noncompliance with these instructions.

Usage conditions and restrictions

- **Domestic use only:** The appliance is designed for private household use only. It is not suitable for commercial, industrial or trade use.
- **Intended purpose:** This washing machine is designed for washing domestic quantities of textiles suitable for machine-washing. Do not use the machine for anything other than its intended purpose, and only use it as described in this manual.
- **No outdoor use:** Do not operate the appliance outdoors.
- **Usage restriction:** This appliance is not intended for use by persons (including children) with reduced physical, sensory or mental capabilities, or lack of experience and knowledge, unless they have been given supervision or instruction concerning use of the appliance by a person responsible for their safety.
- **Children:** Supervise children to ensure they do not play with the appliance. Close supervision is necessary when any appliance is used by or near children. Do not allow children (or anyone else) to climb up and sit on top of the washing machine.
- **Handling:** Handle the washing machine with care. Do not place or store flammable items or heavy objects on top of the machine. Do not sit on the top cover.
- **Door handling:** Handle the door with care. Do not lean against the machine door. Do not let children swing from the door. Do not close the door with excessive force. If you find it difficult to close the door, please check and ensure that the clothes are properly loaded and well distributed.
- **Before loading the washing machine, make sure that:**
 - No young child or pet has climbed into the drum.
 - The water inlet hose is properly connected and the tap is turned on.
 - All pockets of clothing to be washed are empty. Hard, sharp objects such as coins, safety pins, paper clips, bra wires, nails, screws or stones can cause extensive damage to the appliance and block the pump. Any damage or malfunction resulting from foreign objects is not covered by your warranty and may lead to expensive repairs.
- **Do NOT wash the following items in the washing machine:**
 - Rain jackets, raincoats, fishing coats and similar waterproof clothes or covers.
 - Carpets or floor rugs.
 - Underwire bras (damage to the appliance can result if metal reinforcements come loose during the washing cycle).

Important Safety Instructions (Cont.)

- Clothes that have any residues of flammable materials, as this may result in fire or explosion. For example, articles that have been cleaned in, washed in, soaked in, or dabbed with industrial chemicals, or combustible or explosive substances (such as wax, oil, paint, petrol, alcohol, degreasers, dry-cleaning solvents, kerosene, etc.). Items containing such substances must be washed by hand or rinsed thoroughly before they may be machine-washed.
- **Flammable, explosive or toxic substances must not be used** as washing detergents or for cleaning the machine.
- **Capacity:** Do not overload the washer; its maximum capacity is 8kg (max. weight of dry wash load).
- **Water intake:** Never refill the water by hand during washing.
- **After use:** After the program is finished, wait until the drum has stopped spinning and the door lock icon is no longer lit before opening the door. If water is still visible, do not attempt to open the door. Do not add or remove clothes while the drum is spinning.
- **Disconnect** the water and power supplies after use.

CAUTION: Hot!

- During a hot wash, the door window may become hot. Do not touch it, and ensure to keep children and pets away from the machine during operation.
- Be careful of burning when the machine drains hot washing water.

Cleaning and maintenance

- **Disconnect:** Before cleaning or carrying out maintenance, always unplug the appliance from the power supply.
- **CAUTION:** After each wash, clean the door and the door seals and remove any threads, lint or foreign objects. Also check the detergent drawer and clean out detergent residues.
- **Keep parts clean:** Regularly clean the power plug to remove dust and dirt and avoid contact failure.
- **Do not open the housing:** The washing machine has no user-serviceable parts contained within. Do not attempt to repair, dismantle or modify it. Repairs made by inexperienced or unqualified persons may cause injury and/or make more serious repairs to the appliance necessary.
- **Service:** This appliance should only be serviced by authorised service personnel, and only genuine spare parts should be used. To purchase spare parts, please contact our after sales support centre.

Product Overview

Scope of delivery



A Top load washing machine

- 1 Door
- 2 Detergent drawer
- 3 Program dial
- 4 Control panel with LED display
- 5 Wash/spin drum
- 6 Pump filter cover
- 7 Adjustable legs

B Other inclusions (not shown)

- Transport hole plugs (4)
- Cold water supply hose
- Drain hose and hose support (attached to the rear of the machine)
- Wrench
- Instruction manual
- Warranty certificate

NOTE: Due to continued product improvement, images and illustrations in this manual may vary slightly from the product purchased. All images in this manual are for reference purposes only. Parts are not necessarily pictured to scale.

After Sales Support

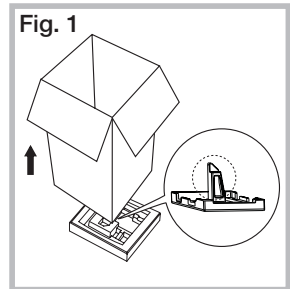
☎ (AU) 1300 886 649 (NZ) 0800 836 761 | ✉ info@tempo.org

Installation

Unpacking the washing machine

CAUTION: EXTREMELY HEAVY!

- A team lift or mechanical aid is required when moving this appliance.
- Keep the washing machine as upright as possible during transportation.
- This product has been packaged to protect it against transportation damage. Remove all packaging materials from inside the drum and around the appliance.
- Keep the original packaging carton and materials in a safe place. It will help prevent any damage if the product needs to be transported in the future, and you can use it to store the appliance when it is not in use. In the event that the carton is to be disposed of, please recycle all packaging materials where possible.
- Plastic wrapping can be a suffocation hazard for babies and young children, so ensure all packaging materials are out of their reach and disposed of safely.
- Carefully lift the washing machine and remove the base packing. Make sure the base protection device is removed together with the bottom piece (Fig. 1). If not, lay the unit down on its side, then remove the small foam piece from the base of the unit manually.
- Remove any tapes securing the cord and drain hose.
- Remove all accessory parts from the drum.



Checking the package contents

- Check all parts of the package against the scope of delivery list on the previous page and ensure you have received all items.
- Check the washing machine for any damage from transportation. Unwind the power cord to its full length and inspect it for damage. **Do not use the appliance if the appliance or its cord has been damaged or is not working properly.** In case of damage, or if anything is missing, contact our after sales support centre for advice on examination, repair or return of the damaged product.
- Read this manual to familiarise yourself with all the parts and operating principles of the wash. Pay particular attention to the safety instructions on the previous pages.

WORKING CONDITION

- Do not operate the washing machine in temperatures outside its normal working condition (0–40°C). Using it in temperatures below 0°C may damage the machine's inlet valve and draining systems.
- If the machine is stored in an area where the temperature drops to below 0°C, transfer it to an area with a warmer ambient temperature before use and ensure no residual water is frozen in hoses and pipes.

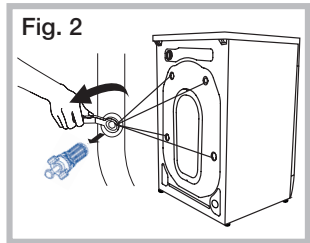
Installation (Cont.)

Removing the transport bolts

WARNING!

- Before installing the washing machine, you must remove the transport bolts from the back of the housing and cover the holes with the transport hole plugs provided.
- **The four bolts hold the drum in place during transport but they must be removed before use so the drum can move during the wash and spin cycles. Leaving the bolts installed will result in strong shock and noise during use, malfunction and serious damage to the machine.**

- Dismantle the four bolts from the back of the washing machine using the supplied wrench (Fig. 2).
- Keep the bolts in a safe place; you will need them again when moving the machine, if you move house. (When required, the transport bolts must be reinstalled into the machine by an authorised service agent; call our after sales support centre for advice.)
- Cover the holes with the supplied transport hole plugs.



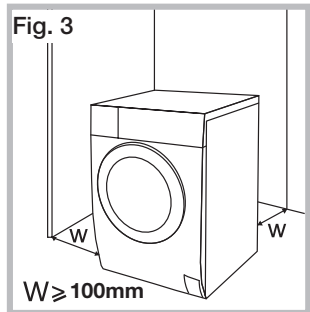
Selecting the location

WARNING!

- Stability is important to prevent the washing machine from moving during operation.
- Make sure that the machine does not stand on the power cord.

Before installing the appliance, make sure the location meets the following requirements:

- The surface is rigid, dry and level – if it is not level, please adjust the levelling legs (see page 12).
- The position is protected from direct sunlight, water and weather.
- There is sufficient ventilation.
- There is 100mm space between any walls and the furthest protruding part of the machine (Fig. 3).
- The room temperature is above 0°C.
- The position is at least 200mm from heat sources.
- The machine will not stand on the power cord.
- The area is not carpeted (if this cannot be avoided, place a plastic mat underneath the machine and make sure any ventilation openings in the base are not obstructed).



Do **NOT** install the appliance:

- Behind a lockable or sliding door, or a door with a hinge on the opposite side of the machine, in such a way that a full opening of the appliance door is restricted.
- In a tight-fitting cabinet.

Installation (Cont.)

Levelling the machine

WARNING!

It is very important to level the washing machine carefully, especially if your floor is uneven. Failure to do so may result in the machine shaking and moving during the spin cycle, or out-of-balance problems.

- Place the machine on solid, dry and level ground.
- First check if the legs are closely attached to the cabinet. If not, please turn them to their original positions and tighten the nuts with a wrench.
- To determine whether levelling is necessary, place a spirit level on top of the washer and hold it upright against the housing to identify any inclinations (Fig. 4).
- To find out which leg needs to be adjusted, press the four corners of the top cover in sequence. If the washing machine is not stable when being pressed, this leg needs to be adjusted.
- Loosen the lock nut with the wrench and turn the leg by hand until it makes close contact with the floor.
- Turn the lock nut **clockwise to raise** the leg and **anticlockwise to lower** it (Fig. 5-2, 5-3).
- To lock the foot, hold the leg with one hand and fasten the nut closely to the cabinet with the other.
- Use the same steps to shorten or lengthen any other leg that needs adjusting.

Fig. 4

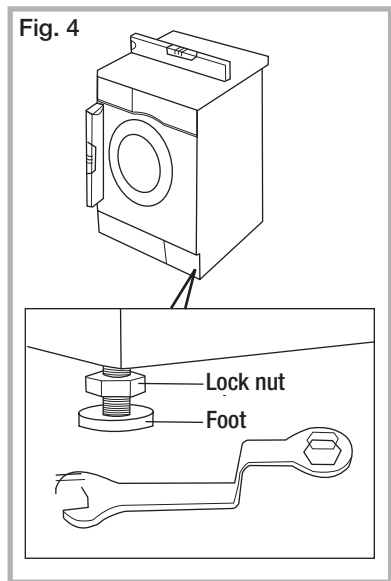
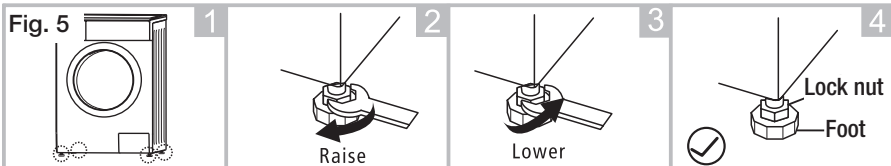


Fig. 5



WARNING!

The lock nuts on all four feet must be screwed tightly against the housing (Fig. 5-4).

Installation (Cont.)

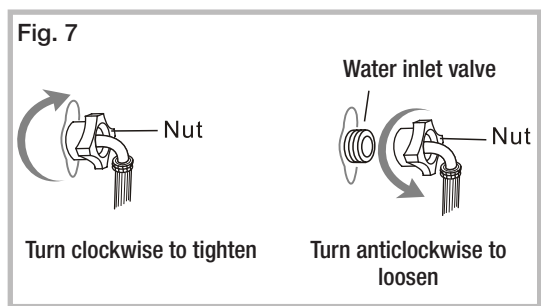
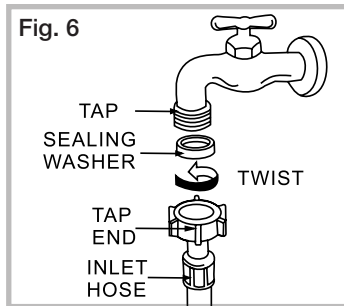
Connecting the water supply hose

WARNING!

- To prevent leakage or water damage, make sure to follow the instructions in this section when connecting the washing machine to your water supply.
- Do not kink, crush, modify or sever the water inlet hose.

Connect the supplied cold water supply hose to an ordinary laundry tap following the instructions below:

- Attach straight end of the hose to your cold water tap. While holding the hose, turn the coupling nut clockwise to tighten securely by hand. [If you need to detach the hose, first turn off the tap, then turn the nut anticlockwise to loosen (Fig. 6).]
- Attach the curved end of the hose to the inlet valve of the washing machine. Tighten the coupling nuts securely by hand (Fig. 7).



- Turn on the taps and check for leaks. In case of leakage, repeat the connection steps above, or tighten the nuts more firmly. If your water pressure is strong, close the water tap completely, then open it slightly.

CAUTION!

- When tightening the coupling nut, take care not to damage the water inlet valve joint. Apply force evenly and do not twist the water inlet valve.
- Use only the new (supplied) hose with your new appliance. Do not use a hose from an existing machine, or one that has been used previously.

Installation (Cont.)

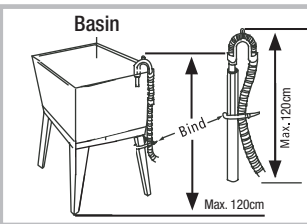
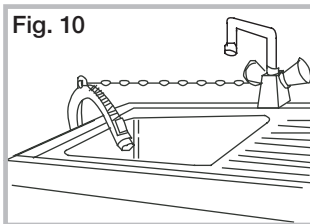
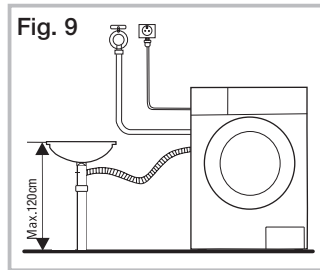
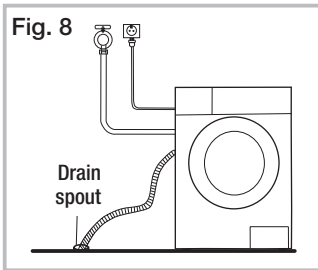
Installing the drain hose

WARNING!

- Do not kink or protract the drain hose.
- Position the drain hose properly in order to prevent water spillage onto the floor and potential damage.
- Never immerse the end of the drain hose in water.

The drain hose is installed at the back of the machine. For drainage of the washing water, you can install the other end of the hose three different ways, as illustrated:

- Lead the drain hose into a drain spout (Fig. 8).
- Affix the drain hose into a branch drain pipe of the laundry sink (Fig. 9).
- Lead the drain hose into a sink/basin, using the drain hose support at the back of the machine, and secure it with a rope or tie (Fig. 10). To ensure proper drainage when the washing machine is in use, the height of the drain hose must not be higher than 120cm above ground.



- When the washing machine is not in use, you may leave the drain hose at the back of the machine, using the hose clips to keep it in place.

WARNING!

- If the drain hose is too long, do not force it into the washing machine as it will cause abnormal noise.
- Never lay down the drain hose as water will be discharged.
- Be sure the drain hose is properly routed so it will not kink or lift off the sink.
- Leave the drain hose affixed to the back of the machine; do not remove the hose buckles.

Installation (Cont.)

Electrical connection

WARNING! This appliance must be earthed!

In the event of a malfunction or breakdown, earthing will reduce the risk of an electric shock by providing a path of least resistance for the electric current.

This appliance is equipped with a cord having an equipment-earthing conductor and an earthing plug. The plug must be plugged into an appropriate outlet that is installed and earthed in accordance with all local standards and requirements.

Do not modify the plug under any circumstances. If the plug does not fit your outlet, consult a licensed electrician and have the outlet changed.

Power supply system

- As the maximum current through the unit is 10A when you are using the heating function, make sure the power supply system (current, power voltage and wire) at your home can meet the normal loading requirements of electrical appliances. The electrical voltage and circuit frequency are listed on the appliance rating label.
- **WARNING!** Only connect the washing machine to a single, grounded (earthed) electrical outlet. Do not overload the outlet, as overloading can result in fire or electric shock. Insert the power plug securely. Do not use a power adaptor or extension cord.

Electrical installation advice

- To avoid electric shock, fire and malfunction, do not install this machine in a damp place. Do not pull out or insert the plug with wet hands or bare feet. Do not expose the appliance, cord or plug to rain, moisture or other liquid.
- Do not kink or damage the power cord, and position it out of the way so no one steps on or places anything on the cord or against it.
- Ensure the washer is unplugged from the power supply before installation. The plug must be accessible after installation.
- **CAUTION!** Use of a power adaptor or extension cord is not recommended. However, if you must use an extension cord, make sure it is earthed, has been approved, and has the same or higher electrical rating (voltage and power) as the product. Arrange the extended cord so that it is not subjected to splashing or ingress of moisture.
- Unless your home is already fitted with a residual current device (safety switch), we recommend installing an RCD with a rated residual operating current not exceeding 30mA to provide additional safety protection when using electrical appliances. See your electrician for professional advice.
- All electrical connections must be made by qualified personnel, and all instructions in this manual as well as local safety regulations must be observed.

Getting Started

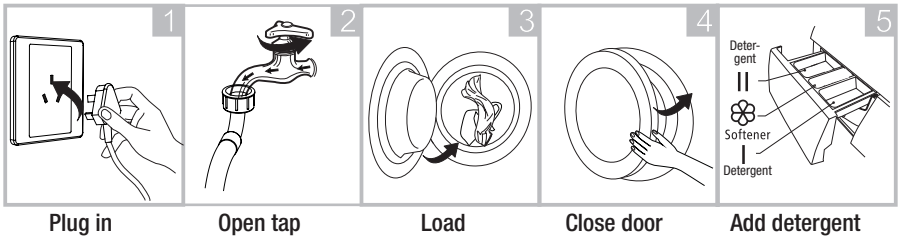
Quick start guide

The pictorial quick start guide below only contains basic information. For detailed operating instructions, please read the corresponding content on the following pages of this manual.

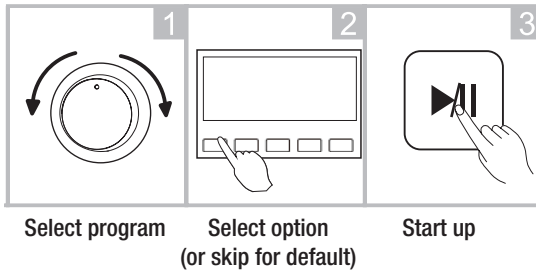
CAUTION!

- Make sure the washing machine is properly and securely installed before using it.
- Before using the washing machine for washing clothes, run a complete washing cycle without clothes, using the drum clean program.

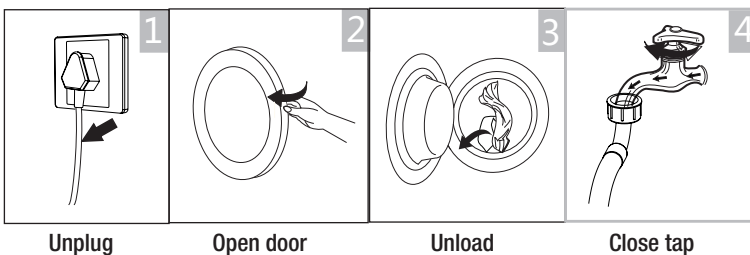
Preparation (Fig. 11)



Washing (Fig. 12)



After washing (Fig. 13)



Getting Started (Cont.)

Control panel (Fig. 14)



1 Wash programs

2 **Program dial:** Turn the program dial to switch on the machine and select your desired wash program.

3 **Stand-by position:** Turn the dial to the stand-by position to switch the machine to stand-by (it switches to stand-by automatically at the end of the program, but the dial remains on the selected program position).

4 **LED display:** Shows the settings, estimated time remaining, options, codes, etc.

5 **Temp. button:** Press to adjust a program's default temperature (if available). Press and hold this button to set the child lock function.

6 **Spin Speed button:** Press to adjust a program's default spin speed (if available). Press and hold this button for at least 3 seconds to mute the buzzer.

7 **+Rinse button:** Press to add an additional rinse (if available).

8 **Delay Start button:** Press to set the delay function (up to a maximum of 24 hours).

9 **Start/Pause button:** Press to start the program or to pause it.

Display (Fig. 15)



The numbers on the LED display (A) show the remaining time, delay time, number of extra rinses, water temperature or spin speed.

Icons will illuminate when you have the buzzer (B) muted, child lock (C) set or door lock (D) activated.

Instructions

Before first use

Before using the washing machine for the first time, please review the following important points and make sure that:

- **All transit bolts are removed.**
- The washer is stable and level. If necessary, adjust the levelling legs to stabilise the washer (see page 10).
- The water supply hose is properly installed (see page 11).
- The power plug is firmly inserted into a nearby power point and power is switched on to the outlet.
- The water tap is open.
- The drain hose is properly installed and secured into the laundry sink or into a drain spout (see page 12).
- **Before using the washing machine for the first time, run a complete drum clean program without laundry items and without any detergent.**

Door lock

The door of the front load washing machine locks automatically when the machine is working. It cannot be opened during the wash without first pausing the wash program.

Unlocking the door

- When the machine is working, press the **Start/Pause** button to pause the program. Wait until the door lock icon extinguishes on the LED display. The door may then be unlocked when the drum has stopped spinning (unless the water temperature is high).
- Suds may flow out of the open door if it is opened during the wash cycle. Beware of suds escaping from the machine and have a cloth/towel ready for catching spills.

NOTE: If you remove the power plug while the machine is working – or when the electricity supply is cut during operation due to a power outage – the door will not unlock automatically.

Child lock

The child lock function lets you lock the door and buttons to prevent unauthorised operation of the machine by young children.

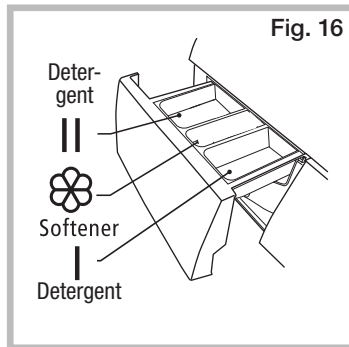
1. To set the child lock, power must be supplied to the machine.
2. Press and hold the **Temp.** button for approximately 3 seconds until a buzzer sounds. The door and all buttons will now be locked.
3. To cancel the child lock, repeat this action.

Instructions (Cont.)

Detergent recommendations

WARNING!

- Do not use flammable and explosive or toxic solvents, petrol, alcohol or other chemicals in the machine.
 - Keep detergents and clothing care preparations out of reach of children.
- **Only use low-sudsing detergent and clothing care preparations that are suitable for use in a front load washing machine, or in a top and front load machine.** Detergents for top load machines are unsuitable because they tend to produce too much suds, which may cause overflowing from the detergent drawer.
 - Use detergent in the amounts recommended on the detergent packaging. Dosage depends on your amount of washing, the degree of soiling, water hardness and the washing performance of your detergent. Using too little detergent will give poor washing results, but too much will affect rinse performance and may cause overflow of suds, which could interfere with machine operation. **Do not overfill detergent!**
 - Pull open the detergent dispenser drawer and add detergent, as illustrated (Fig. 16) and described below.



|| The detergent compartments on the left and right side of the drawer are for low-sudsing detergent. If you are using powder detergent, we recommend you dissolve it in some water before adding it to one of the two compartments.

| Liquid detergent and bleach may also be added to these detergent compartments, but they must be diluted according to the instructions on the bottle. Never pour bleach directly onto the washing or into the compartment, as this can cause stains or fading of coloured garments.

⊗ The middle compartment is for fabric softener. It will be dispersed through the washing during the last rinse cycle. Concentrated fabric softeners should be diluted as required. Do not exceed the full mark line.

Instructions (Cont.)

Table 1: Programs

Program	Application	Max. Load (kg)	Rinses (default + extra)	Default Temperature (default + temp. range) (°C)	Default Time (hr:min)	Spin Speed (RPM) (default + extra)
Cotton Eco #	A warm water eco program with an extra long washing time for energy efficiency	8.0	3 (2 - 6)	40 (Cold - 30 - 40 - 60)	5:39	1400 (400 - 600 - 800 - 1000 - 1200 - 1400)
Cottons	Normally soiled cottons, linens or cotton mix fabrics (e.g. table linen, towelling, underwear, T-shirts etc.)	8.0	2 (2 - 6)	40 (Cold - 30 - 40 - 60 - 80)	1:21	1400 (400 - 600 - 800 - 1000 - 1200 - 1400)
Mixed Wash	A warm water program for a mixed load of synthetic and cotton textiles	6.0	2 (2 - 6)	40 (Cold - 30 - 40 - 60)	1:18	1000 (400 - 600 - 800 - 1000 - 1200)
Jeans	A program for denim jeans or similar hard-wearing cotton clothing	5.0	2 (2 - 6)	30 (Cold - 30 - 40)	1:08	1000 (400 - 600 - 800 - 1000 - 1200)
Woollens	A specially gentle program for machine-washable wool or wool-blend textiles. Designed to prevent shrinkage.	2.0	2 (2 - 6)	Cold (Cold - 30 - 40)	1:04	600 (400 - 600 - 800)
Synthetics	A gentle program for synthetic or synthetic blend textiles	6.0	2 (2 - 6)	30 (Cold - 30 - 40 - 60)	1:07	800 (400 - 600 - 800 - 1000 - 1200)
Down Jackets	A gentle program for puffer (down-filled) jackets, vests and similar clothing	2.0	2 (2 - 6)	30 (Cold - 30 - 40)	1:31	800 (400 - 600 - 800 - 1000)
Quick Wash	An extra short program for a few lightly soiled items	1.0	1 (1 - 4)	Cold (Cold - 30)	0:16	800 (400 - 600 - 800 - 1000 - 1200 - 1400)
Colours	A cold program for brightly coloured items	3.0	2 (2 - 4)	Cold	1:00	600 (400 - 600 - 800)
Delicates	Delicate, washable textiles made from synthetic, rayon, viscose or blended fibres	3.0	2 (2 - 6)	Cold (Cold - 30 - 40)	0:55	400 (0 - 400 - 600)
Shirts	Cotton or mixed fibre shirts and blouses	3.0	2 (2 - 6)	30 (Cold - 30 - 40 - 60)	1:05	800 (400 - 600 - 800 - 1000)
Hot	A very hot water wash for items requiring particularly high levels of hygiene	4.0	3 (3 - 6)	80 (60 - 80)	2:23	800 (400 - 600 - 800 - 1000 - 1200 - 1400)
Rinse + Spin	Separate rinse program with spin	6.0	1 (1 - 6)	-	0:21	1000 (400 - 600 - 800 - 1000 - 1200 - 1400)
Spin	Separate spin program with selectable speed. Drains water before spinning.	6.0	-	-	0:12	1000 (400 - 600 - 800 - 1000 - 1200 - 1400)
Drum Clean	A drum cleaning program designed for use without laundry items	-	1	80	2:19	800

This program was used for energy efficiency testing to the standard.

Instructions (Cont.)

Program notes

The programs table on page 18, opposite, lists each program's default parameters and the range of available options.

Water temperature

This front load washing machine has **one** water connection for your **cold** water tap. Most wash programs have a **Cold** wash option, which takes the water straight from the tap. A thermostat inside the machine measures the temperature of the incoming water. If it is too cold for the water temperature selected, the washer's internal heating elements heat the water to the set temperature.

To change a program's default water temperature, press the **Temp.** button repeatedly and select from the options available: Cold, 30°C, 40°C, 60°C, 80°C (not all options are available for all programs).

Spin Speed

To change a program's default spin speed, press the **Spin Speed** button and select from 400, 600, 800, 1000, 1200, 1400 RPM (not all options are available for all programs).

+Rinse

To add extra rinse (or more) to a program's default rinse cycles, press the **+Rinse** button. Extra rinses are not available for all programs.

Delay start

This function lets you delay the finishing time of the wash by up to 24 hours. It is available for all wash programs. To set it:

1. Use the program dial to switch on the machine and select your desired washing program.
2. Press the **Delay Start** button and choose the desired finishing time in one-hourly intervals, up to a maximum of 24 hours.
3. Press the **Start/Pause** button to start the delay operation.
4. To change the delay time, turn the program dial to the stand-by position and then reset the wash program and delay time.
5. To cancel the delay function, turn the program dial to the stand-by position.
6. To check the delay time, press the **Delay Start** button and the delay time will be displayed for five seconds.

NOTE: The actual delay time varies depending on the selected program.

Instructions (Cont.)

Woollens

The wool wash program is designed for machine-washable woollen garments. Its temperature cannot be increased to more than 40°C.

Before washing your woollens in the washing machine, please check the garment care label in your clothes to ensure they are suitable for machine-washing. Sort the garments into light and darker coloured items and use a wool wash detergent.

At the end of the wash, take your garments out of the machine straight away and place them flat on a suitable surface for air-drying.

Other functions

Adding a garment during the wash

During the washing process, the door to the washer is locked and cannot be opened. If you need to add any additional items, or rearrange the load, you need to pause the machine and disable the door lock first.

1. Press and hold the **Start/Pause** button until the door lock light is off and the drum has stopped rotating. The display will show "Add".
2. Open the door and add any additional items, or rearrange the load.
3. Close the door and press the **Start/Pause** button to continue the program.

NOTE: When there is a large amount of foam or water in the drum, use a dry towel when opening the door to prevent foam and water spilling onto the floor. During a hot water wash, the door may not be opened until the water temperature has cooled to a safe temperature.

CAUTION!

Do not attempt to open the door forcibly!

Doing so is unsafe and will cause damage to the locking mechanism.

Muting the buzzer

The machine has a buzzer which alerts you when the program has finished or when there is a malfunction.

1. To mute the buzzer, power must be supplied the machine.
2. Press and hold the **Spin Speed** button for approximately 3 seconds until the buzzer sounds. The buzzer is now muted and will remain muted until you cancel the setting (by repeating this action).

CAUTION!

Once the buzzer is muted, you will no longer be alerted audibly to the end of a program or a malfunction.

Instructions (Cont.)

Before each wash

- **Before loading the washing machine:**
 - Ensure that the washer is stable, level and properly connected to the power supply.
 - Check that no young child or pet has climbed into the drum.
 - Ensure that the water inlet hose is properly connected.
 - Ensure that the drain hose is securely connected into the drain spout or sink.
- **When loading the machine:**
 - Empty all pockets of clothing to be washed. Hard, sharp objects such as coins, safety pins, paper clips, bra wires, nails, screws or stones can cause extensive damage to the appliance and block the pump. Any damage or malfunction resulting from foreign objects is not covered by your warranty and may lead to expensive repairs.
 - Turn items with zippers inside out, close zippers, hooks and eyelets, fasten buckles and tie fabric belts. This will also help reduce impact noise when the items hit against the turning drum.
 - Brush dirt, sand or pet hair off clothes and turn pockets inside out.
 - Turn items that pill easily inside out.
 - Sort your washing into appropriate loads: whites, coloureds, cottons, delicates, heavily soiled, etc. Place small or delicate items into a wash bag for protection.
 - Put your washing in the machine, loading items uniformly in the drum. For best results, include both larger and smaller items in a wash.
 - Do not overload the washer; the maximum dry washing capacity is 8kg.
 - When closing the appliance door prior to starting the unit, ensure that items are not jammed in the door.
- **CAUTION: Do NOT wash the following items in the washing machine:**
 - Jackets, raincoats, fishing coats and similar clothes.
 - Carpets or floor rugs.
 - Underwire bras – instead, ensure these are placed in a closed garment bag before washing in the machine.
 - Clothes that have any residues of flammable materials, as this may result in fire or explosion. For example, articles that have been cleaned in, washed in, soaked in, or dabbed with industrial chemicals, or combustible or explosive substances (such as wax, oil, paint, petrol, alcohol, degreasers, dry-cleaning solvents, kerosene, etc.). Items containing such substances must be washed by hand or rinsed thoroughly before machine-washing them.
 - Single items, as this can cause unbalance problems during the wash or spin cycles. We suggest you always add a few more items to the wash to avoid such problems.
 - Items such as ties, suits, evening attire; silk or fur attire; or anything else labelled unsuitable for machine-washing. Always check the garment label (see page 26).

Instructions (Cont.)

Step-by-step washing instructions

1. **Connect:** Plug the machine in, switch on power to the outlet and open the water tap.
2. **Load:** Open the door of the washer and load the machine following the guidelines on the previous page. Close the door and ensure that no items are caught in the door.
3. **Add detergent:** Pull out the detergent dispenser and add detergent as required, then close the dispenser.
4. **Select a program:** Rotate the **Program dial** to switch on the washing machine and select the desired program. Always check your clothes labels for recommended wash and care instructions (see page 28).
5. **If required, change a default setting or select an option:** To select a washing temperature or spin speed different from the default setting, or select an additional option, press the relevant button.
6. **Start the program:** Press the **Start/Pause** button. On the display the remaining time will be illuminated.
7. **At the end of the program,** the buzzer will sound to alert you that the program has finished (unless you have muted the buzzer). The machine switches to stand-by automatically, but the dial remains on the selected program position. You may want to turn the dial back to the stand-by position. Unplug the washing machine from the power supply and close the water tap.
8. **Unload:** Open the door and unload the washing machine. We recommend you leave the door slightly ajar so the drum can dry properly and to prevent mould and odour development.

FAQs and Troubleshooting Guide

When the following problems occur, the microcomputer inside the washer will detect the abnormal condition, display an error message and the washer will stop operating. If after your remedial action the problem persists, please contact our after sales support centre for advice.

Table 2: Error messages

Error message	Possible cause	Solution
No display	Out of operation	<ul style="list-style-type: none"> • Ensure the machine is properly connected and power is supplied. • Check for a power failure in your area. • Check the leakage protector switch.
E11	No water	<ul style="list-style-type: none"> • Ensure the tap is open. • Check whether water in the supply hose is frozen (see page 29 for solution). • Check the filter and ensure it is clean and unblocked. • Check for a water stoppage in your area.
E12	No drainage	<ul style="list-style-type: none"> • Ensure the drain height is not too high. • Ensure the drain hose has the appropriate length and is properly connected. • Ensure the drain hose is not blocked.
H	Door cannot be opened	<ul style="list-style-type: none"> • Ensure the water supply hose is connected to your cold water tap. • The water temperature is too high for the door to be opened. This is a safety feature.
U4	Door is not closed properly	<ul style="list-style-type: none"> • Close the door properly and ensure the door lock indicator is on. Then press Start/Pause to restart. • Check and ensure no items are caught in the door.
U3	Out of balance problem during the spin cycle	<ul style="list-style-type: none"> • Ensure the washer is installed level. • Ensure you do not have too many large/ bulky items in the wash. • If washing one large item, add a few smaller items. • Ensure the washer is not overloaded.
Other code	Other problems	<ul style="list-style-type: none"> • Restart the washer. • If the problem still persists after restarting, unplug the washer, close the water tap and contact our after sales support centre.

FAQs and Troubleshooting Guide (Cont.)

Not all unusual incidents you may encounter with your washing machine are faults, or cause for concern. Check in the list below what issues may arise and why. Also check in the table on the previous page for solutions to problems that may be resolved without the need for a service call.

Table 3: Troubleshooting

Problem	Possible cause	Solution
The washing machine does not start up.	<ul style="list-style-type: none"> The door is not closed properly, or items are caught up in the door. The plug is not firmly plugged in. Have you selected a program and pressed the Start/Pause button? The water tap is closed. 	<ul style="list-style-type: none"> Check and ensure no items are caught in the door, then close the door properly and restart. Ensure you have properly inserted the plug, selected a program and pressed the Start/Pause button. Ensure the water tap is open.
The door cannot be opened.	<ul style="list-style-type: none"> The machine's safety protection design is working. The water temperature is still too high. The child lock is set. 	<ul style="list-style-type: none"> Wait a few moments after the end of a program before opening the door. Wait until the water has cooled. Unlock the child lock. Disconnect the power and restart the machine.
No water	<ul style="list-style-type: none"> The water tap is closed. Water is frozen in the supply hose. The filter is blocked. There is a water stoppage in your area. 	<ul style="list-style-type: none"> Ensure the tap is open. See page 29 for solving water freezing issues. Ensure the filter is clean and unblocked. Restart when the water is back.
Water leakage	<ul style="list-style-type: none"> The water supply hose or drain hose are not tightly connected. The drain hose is blocked. 	<ul style="list-style-type: none"> Check and ensure both hoses are securely connected. Check and ensure the drain hose is not blocked.
Abnormal noise	<ul style="list-style-type: none"> The transport bolts have not been removed. The machine is installed on an uneven or unstable floor. A loose object knocks against the drum walls. 	<ul style="list-style-type: none"> Make sure the transport bolts have been removed. Make sure the machine is installed on a solid, level floor. Ensure to check pockets before the wash and remove any coins, hairpins, etc.

FAQs and Troubleshooting Guide (Cont.)

Problem	Possible cause	Solution
Detergent residues in the dispenser	Powder detergent was damp or stuck together in a lump.	<ul style="list-style-type: none"> Wipe the detergent dispenser clean. Make sure to store powder detergent in a dry place.
Water inflow during the wash/rinse cycle	When water levels are dropping during the wash/rinse, the machine automatically adds motor water.	
Water draining during the wash/rinse cycle	When there is too much foam from a high-sudsing detergent, the machine drains water automatically.	
Peculiar smell	Because the washer has rubber components, you may notice a rubber smell when first using the machine. This is normal and no cause for concern.	
Less water usage	Front load washers use less water for washing and rinsing than top load machines. This is normal.	
Remaining time change	<ul style="list-style-type: none"> The washer automatically takes in water for balance purposes, if the wash load is poorly distributed. The remaining time is calculated based on 15L/min inflow, so it varies depending on the water pressure. The washer will prolong the spin time if the load is still unbalanced. 	
Failure to work after power failure	<ul style="list-style-type: none"> The machine will stop operating when the power is cut off. When the power is back on, please reset the program and then press Start/Pause. 	
Emergency door opening	<p>When a power failure last for some time and you want to take your washing out of the machine, proceed as follows:</p> <ol style="list-style-type: none"> Unplug the power cord after the drum has stop rotating. Get a container and a rag for the water to drain into while you wait for the water to cool to a safe level. Open the pump filter cover at the bottom right hand corner of the front panel. The water will drain out of the hose. When enough water has been drained out of the drum (the water level must be lower than the edge of the inner drum), pull down the emergency rope underneath the bottom right hand corner of the cabinet and listen for a slight noise, then you can open the door and remove your laundry items. 	

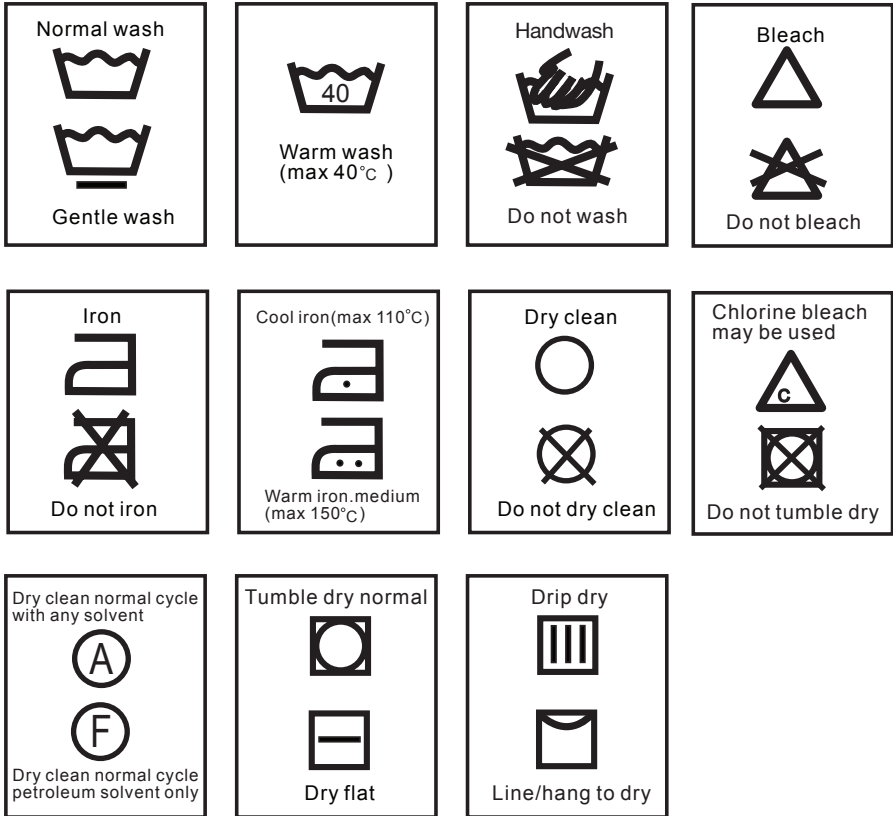
If none of the solutions offered above and on the previous pages help you solve the problem, please contact our after sales support centre for advice.

Other Useful Information

Garment care symbols

When choosing a wash program, check for any labels in your clothes and follow the instructions. Below are some commonly used symbols and explanations what they mean.

Fig. 17



Other Useful Information (Cont.)

Cleaning and care

To prolong the service life of the washing machine, keep it in good condition and perform regular maintenance.

WARNING!

For any type of cleaning and maintenance, make sure the washing machine is disconnected from the mains power supply and the water tap is closed.

Cleaning the cabinet (when required)

- Use a soft cloth to wipe any water or dirt off the washer housing.
- To remove dirt and stains, use a mild detergent solution and a damp cloth. Squeeze it almost dry to avoid leaving water residues.

WARNING!

Do not use any solvents, alcohol, harsh chemicals, alkaline or abrasive cleaning agents, or sharp objects, to avoid damaging the surface. Do not spray water directly onto the washer housing.

Cleaning the drum (once a month)

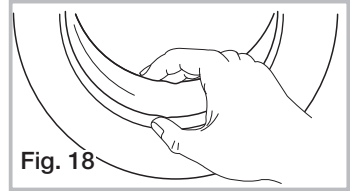
- Make sure all laundry items are removed from the drum, then wipe it clean with a soft dry or damp cloth.
- If you notice any rust residues left inside the drum from washing items with metal parts (such as buttons or zippers), wipe the residues off immediately with chlorine-free detergent. Never use steel wool.
- To remove dirt and/or detergent residues from the drum, run the *Drum Clean* program without any clothes or detergent.
- **IMPORTANT!** Cleaning the inside of your washing machine regularly is particularly important **if you frequently use a cold wash cycle**, especially if you also use a fabric softener. Liquid detergents can cause detergent scum to build up around the outside of the drum, which cold water will not remove and which can cause bacteria, unpleasant odours, and eventually soiling of your wash load.
- To remove scum build-up from the inside and outside of the washing machine's drum, run a the *Drum Clean* program without clothes and detergent.

Other Useful Information (Cont.)

Cleaning the door seal and glass (after each wash)

After each wash:

- Wipe the glass and seal to remove lint and stains. A build-up of lint can cause leaks.
- Check for coins, buttons and other small objects in the seal creases (Fig. 18) and remove them.
- Leave the door slightly ajar so the inside can dry properly. This will also help prevent the development of mould or odours.

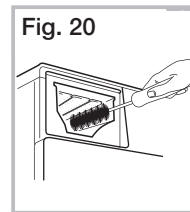
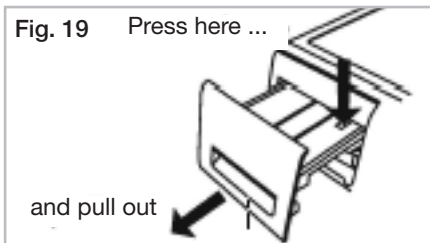


Cleaning the detergent dispenser (when required)

The detergent dispenser may be removed for cleaning.

- Pull open the dispenser drawer, press down the arrow tab and pull the drawer out of its space (Fig. 19).
- Clean the dispenser drawer thoroughly under running water. Clean the recess with a small brush (Fig. 20).
- Wipe all parts dry with a clean cloth, then reinstall the drawer back into its space.

NOTE: Do not use any solvents, alcohol, harsh chemicals, alkaline or abrasive cleaning agents, or sharp objects, to avoid damaging the surface.



Other Useful Information (Cont.)

Cleaning the water inlet filters

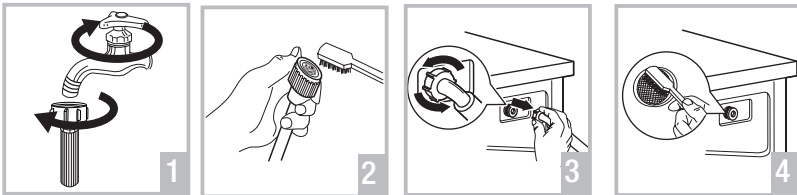
To avoid blockage of the mesh filters at the water tap or hose after long time use, we recommend you clean these filters every 6 months, or when the water pressure decreases noticeably.

CAUTION!

Before cleaning the water inlet filters, make sure you have turned off the water supply at the tap.

- **Mesh filter at the water tap end:** Detach the water inlet hose (Fig. 21-1). Take the mesh filter out of the water inlet valve and clean the filter with a soft brush (Fig. 21-2). Then assemble the filter back into the valve.
- **Mesh filter at the inlet valve:** Screw the water supply hose off the inlet valve at the back of the washing machine, turning anticlockwise (Fig. 21-3). Clean the filter with a soft brush (Fig. 21-4).
- **Reconnect the water supply hose** to the water tap on your wall and to the water inlet valve at the back of the washing machine. For more detailed connection instructions, please refer to page 11.

Fig. 21



Freezing conditions

When temperatures have fallen below zero degrees Celsius and water has frozen in the water supply hose, proceed as follows:

1. Wrap a hot towel around the water tap and the water supply hose joint.
2. Disconnect the water supply hose and soak it in a tub of hot water of approximately 50°C.
3. Pour about 2-3 litres of hot water (approximately 50°C) into the drum of the washing machine.
4. When all frozen water has thawed, reconnect the water supply hose, open the tap and start the machine to check whether all blockages have been removed.

Other Useful Information (Cont.)

WARNING!

- For any type of cleaning and maintenance, make sure the washing machine is disconnected from the mains power supply and the water tap is closed.
- Do not open the pump filter cover during the course of a wash program.
- If you are checking the drain pump after a hot water wash, take particular care as any residual water in the machine may be hot. Wait with maintenance until the water has cooled down to avoid burns.

Drain pump maintenance

In order to avoid blockages created by excess lint, threads or items such as bobby pins, coins, etc., check the drain pump filter regularly, especially if the machine fails to drain the water or spin properly, or if you notice any unusual noises during the drain or spin cycles.

CAUTION: If you are checking the drain pump after a hot water wash, wait until any residual water has cooled to a safe level.

1. Place a container underneath the drain pump filter when removing it, and always keep a rag nearby to dry up any water spillage.
2. Insert a coin into the groove of the pump filter cover and press it. You can now open the pump filter cover. Any residual water will drain out of the hose.
3. Turn the filter anticlockwise and pull it out (Fig. 22).
4. Remove any foreign objects and clean the filter with water.
5. Reinsert the filter. Turn it clockwise to secure. Close the pump filter cover.



WARNING! Make sure to reinstall the drain pump filter and close the cover panel securely, otherwise water may leak.

Storage

If the appliance is not going to be used for an extended period of time, please unplug the machine from the power supply and disconnect all hoses. Clean the machine and filters as described on the previous pages. Let the machine air-dry thoroughly, then store it in the original packaging in a dry location, out of reach of children.

Service and repair

If the appliance is damaged, do not attempt to repair it yourself. If it requires repair or service, contact our after sales support centre to arrange for examination and repair of the product.

Other Useful Information (Cont.)

Specifications and technical parameters

Rated capacity (washing/spinning)	8kg
Rated voltage and frequency	230–240V~ 50Hz
Rated power	2000W
Water pressure	0.03MPa – 1.0MPa
Liquid ingress protection	IPX4
Weight	66kg
Dimensions	600mm (W) x 595mm (D) x 850mm (H)

Compliance

This appliance has been fully tested and meets all requirements as set out by standards AS/NZS 60335.1 and AS/NZS 60335.2.7



The RCM Mark (Regulatory Compliance Mark) indicates that the product complies with the relevant guidelines of the ACMA as well as corresponding government requirements for the safety of electrical devices.

Responsible disposal

- Packaging materials are recyclable. Please dispose of them responsibly for recycling.
- At the end of its working life, do not throw this appliance out with your household rubbish. Electrical and electronic products contain substances that can have a detrimental effect on the environment and human health if disposed of inappropriately. Observe any local regulations regarding the disposal of electrical consumer goods and dispose of it appropriately for recycling. Contact your local authorities for advice on recycling facilities in your area.

NOTE: Due to continued product improvement, images and illustrations in this manual may vary slightly from the product purchased. All images in this manual are for reference purposes only. Parts are not necessarily pictured to scale.

Warranty returns

Should you for any reason need to return this product for a warranty claim, make sure to include all accessories with the product.

Product does not work?

If you encounter problems with this product, or if it fails to perform to your expectations, make sure to contact our After Sales Support Centre on 1300 886 649 for advice.

For an electronic copy of this manual, please contact our after sales support centre.

Instruction Manual Revision Index

Version No	Issue Date	Description
V1.0	09 August 2019	Original release
V1.1	15 August 2019	Updates: pages 09, 12, 15, 22, 31
V1.2	20 August 2019	Update, page 18
V1.3	22 August 2019	Updates, page 18

After Sales Support

☎ (AU) 1300 886 649 (NZ) 0800 836 761 | ✉ info@tempo.org