

**DAEWOO**

# Service Manual

## Washing Machine

### Model:

**DWD-F1011/F1012/F1013/F1211/F1212/F1213**

**DWD-F1021/F1022/F1023/F1221/F1222/F1223**

**DWD-F1031/F1032/F1033/F1231/F1212/F1233**

**NFL-1065/NFL-1265**

### ✓ **Caution**

: In this Manual, some parts can be changed for improving, their performance without notice in the parts list. So, if you need the latest parts information, please refer to PPL(Parts Price List) in Service Information Center (<http://svc.dwe.co.kr>).

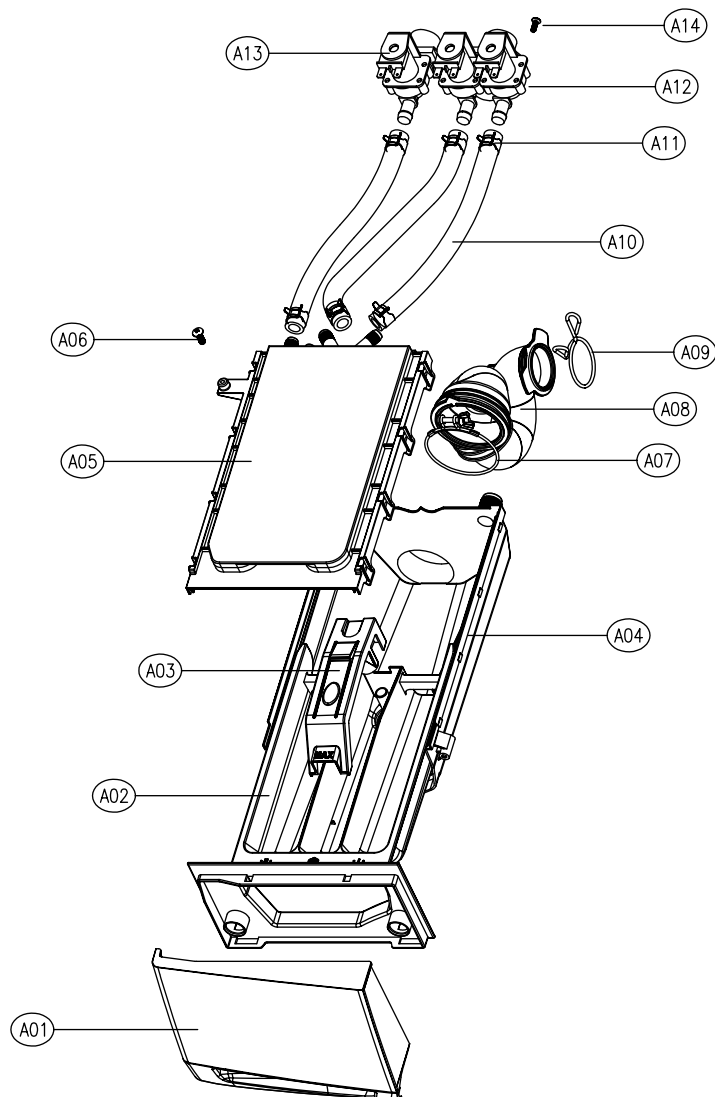
**DAEWOO ELECTRONICS CORP.**

[http : //svc.dwe.co.kr](http://svc.dwe.co.kr)

May. 2005

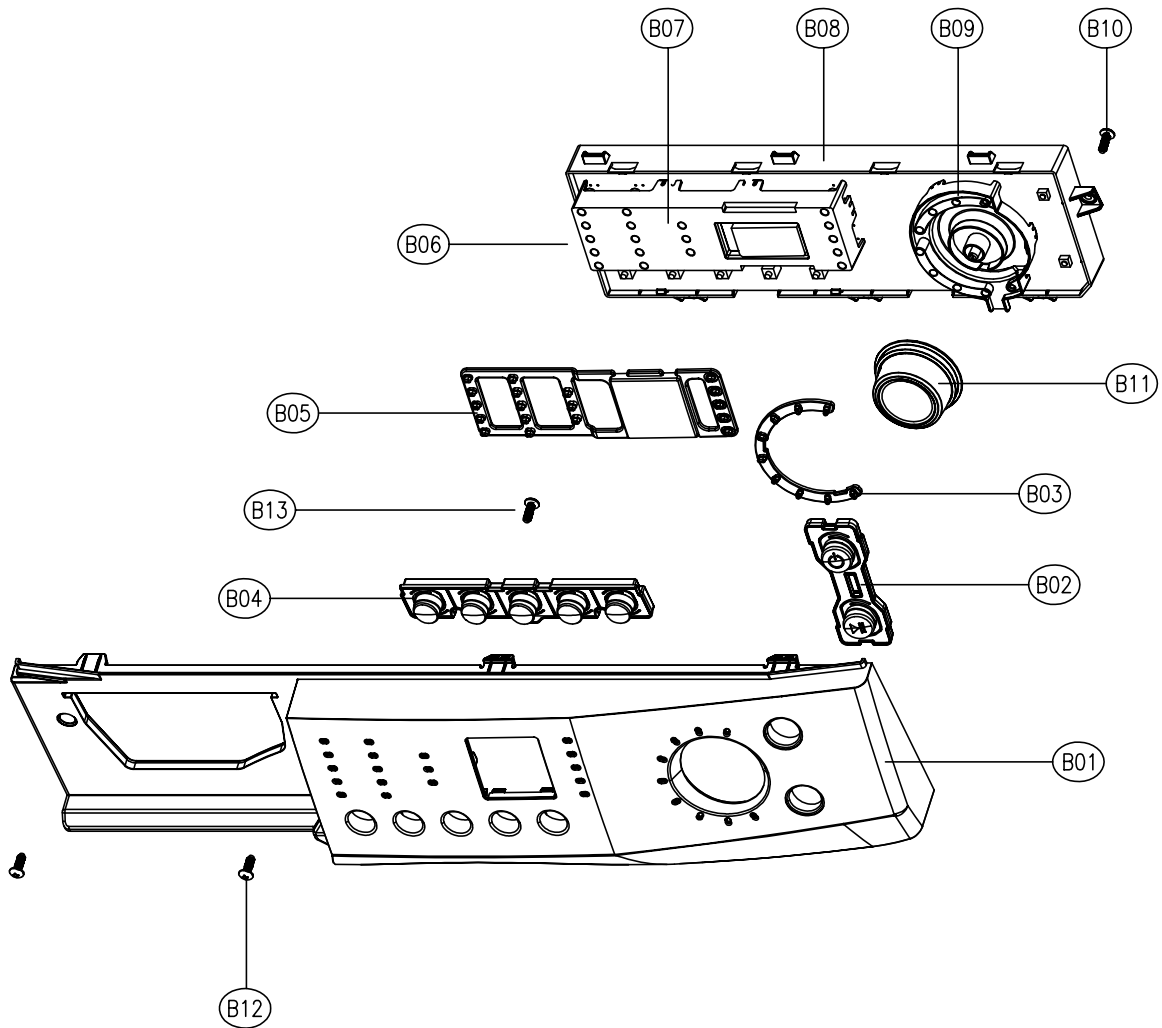
## 5. EXPLODE VIEW AND PARTS LIST

### ■ BOX INLET AS



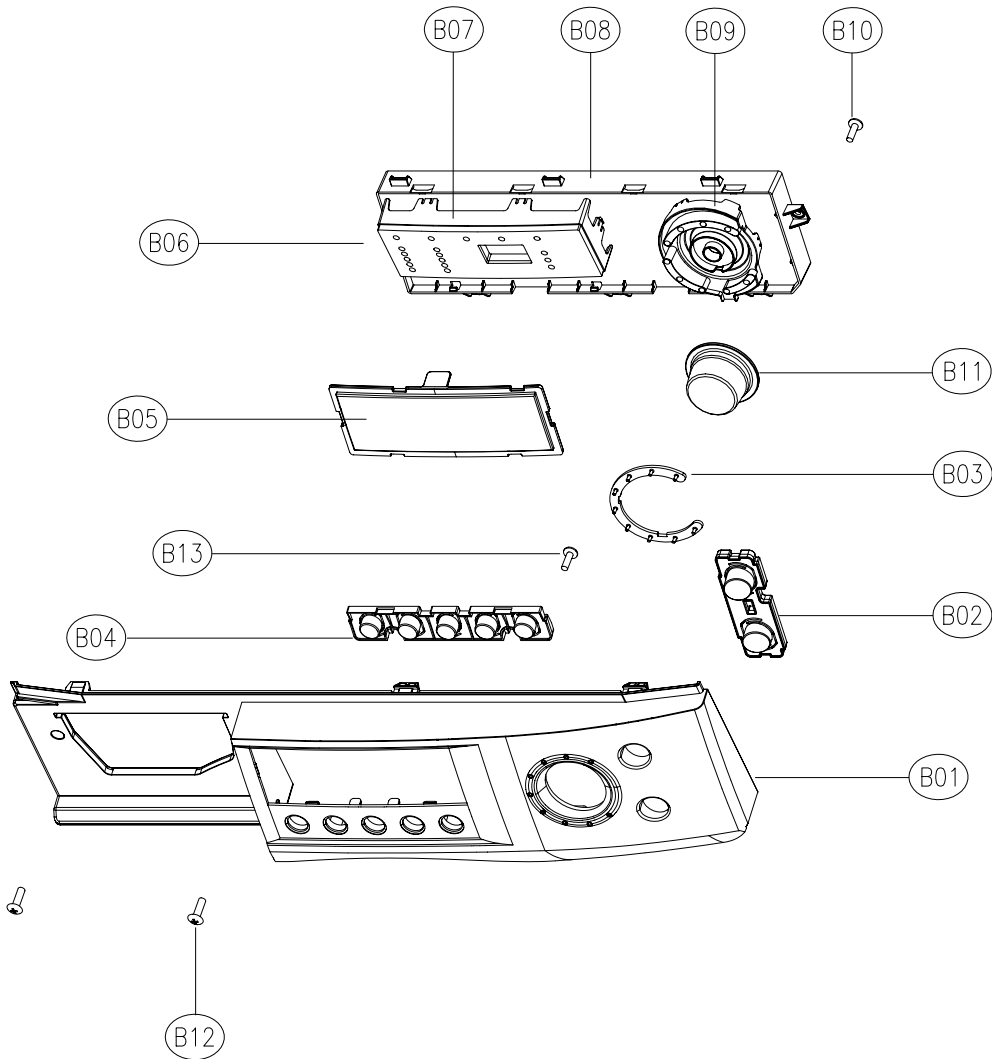
No.	PART NAME	PART CODE	SPECIFICATION	Q'TY	REMARK
A01	HANDLE CASE	3612608700	ABS	1	DWD-F1X11(2)
		3612608710	ABS+SPRAY		DWD-F1X13
		3612608900	ABS		DWD-F1X21(2)
		3612608910	ABS+SPRAY		DWD-F1X23
		3612609700	ABS		DWD-F1X31(2)
		3612608710	ABS+SPRAY		DWD-F1X33
A02	CASE DETERGENT	3611140300	PP	1	
A03	CAP SOFTENER	3610916600	PP	1	
A04	BOX INLET	3610526500	PP	1	
A05	NOZZLE AS	3618103500	NOZZLE TOP + NOZZLE UNDER	1	COLD+HOT COLD ONLY
		3618103510			
A06	SCREW TAPPING	7122402011	T2S TRS 4X20 MFZN	1	
A07	CLAMP AS	3611203200	ID=60,WIRE+GUIDE+BOLT+NUT	1	
A08	HOSE INLET	3613267200	EPDM U-TRAP	1	
A09	CLAMP HOSE I	3611201400	HSW3, D2.6, MFZN, ID=38	1	
A10	HOSE WATER SUPPLY	3613270900	EPDM,ID=9.5,OD=14.5,L=225	2(1)	COLD(HOT)
A11	CLAMP HOSE	3611205800	ID=13.8, W=10.0, T=0.9	4(2)	COLD(HOT)
A12	VALVE INLET	3615414900	220~240V 2WAY PP VDE	1	COLD
		3615414910	220~240V 2WAY NYLON VDE		
A13	VALVE INLET	3615414800	220~240V,50/60Hz,1WAY	1	HOT
A14	SCREW TAPTITE	7272400811	TT3 TRS 4X8 MFZN	2(2)	COLD(HOT)

## ■ PANEL FRONT AS (DWD-F1X1X SERIES)



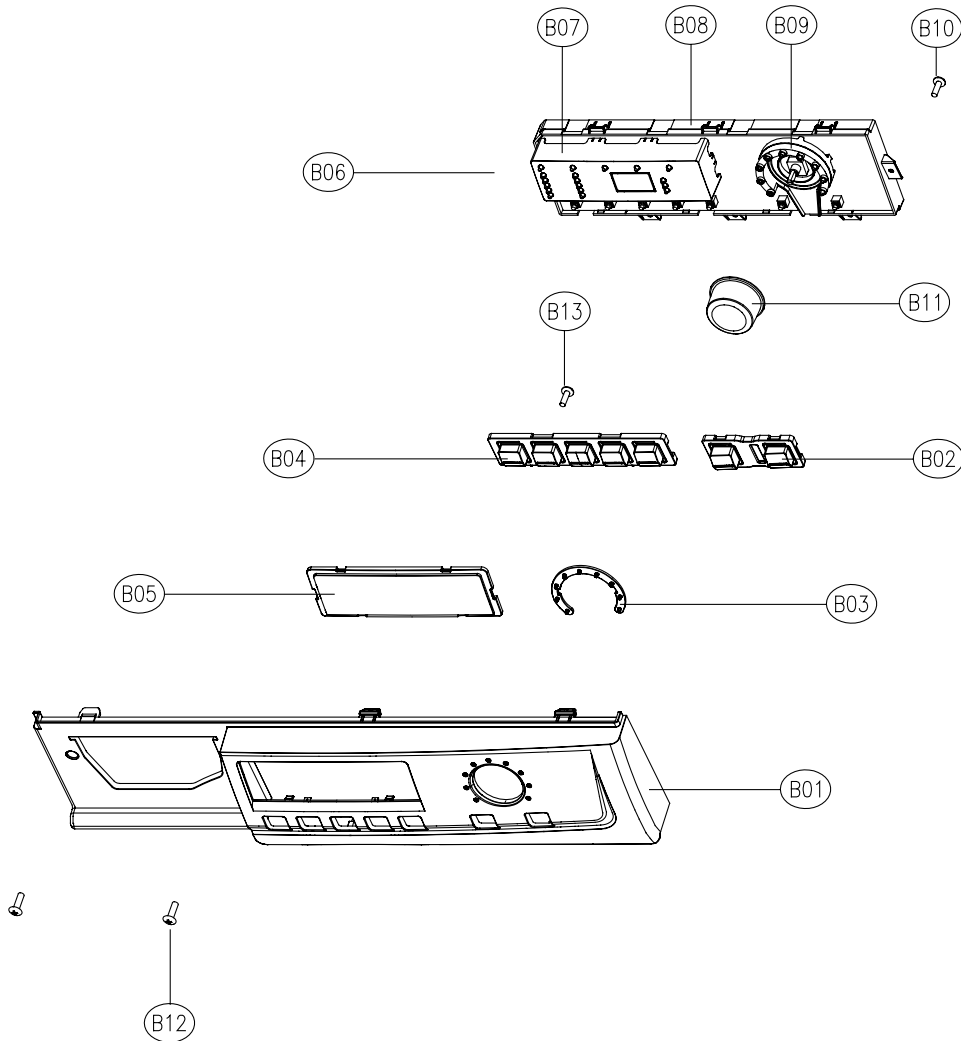
No.	PART NAME	PART CODE	SPECIFICATION	Q'TY	REMARK
B01	PANEL F	3614282700	ABS	1	DWD-F1X13
		3614282710	SILVER SPRAY		
B02	BUTTON POWER	3616603600	ABS	1	DWD-F1X11/DWD-F1X14
		3616603620	ABS+AL COATING		
B03	WINDOW DIAL	3615503100	ABS	1	
B04	BUTTON SELECT	3616603500	ABS	1	DWD-F1X11/DWD-F1X14
		3616605320	ABS+AL COATING	1	
B05	WINDOW LED	3615503000	ABS		
B06	PCB AS	PRPSSWB1-	DWD-F1XXX SERIES	1	Refer to Detailed Part Code of PCB AS
B07	HOLDER LED	3613049600	ABS	1	
B08	CASE PCB	3611140200	HIPS	1	
B09	HOLDER DIAL	3613049700	ABS	1	
B10	SCREW TAPPING	7122401611	T2S TRS 4x16 MFZN	4	
B11	KNOB DIAL AS	3613405000	ABS, AL COATING	1	DWD-F1X13
		3613405010	ABS+SILVER SPRAY, UV COATING		
B12	SCREW TAPPING	7122401608	T2S TRS 4x16 SUS	2	
B13	SCREW TAPPING	7122401211	T2S TRS 4x12 MFZN	2	

## ■ PANEL FRONT AS (DWD-F1X2X SERIES)



No.	PART NAME	PART CODE	SPECIFICATION	Q'TY	REMARK
B01	PANEL F	3614284500	ABS	1	DWD-F1X23
		3614284510	SILVER SPRAY		
B02	BUTTON POWER	3616604200	ABS	1	DWD-F1X21
		3616604210	ABS+AL COATING		
B03	WINDOW DIAL	3615503400	ABS	1	
B04	BUTTON SELECT	3616604100	ABS	1	DWD-F1X21
		3616604110	ABS+AL COATING	1	
B05	WINDOW LED	3615503300	ABS		
B06	PCB AS	PRPSSWB1-	DWD-F1XXX SERIES	1	Refer to Detailed Part Code of PCB AS
B07	HOLDER LED	3613050500	ABS	1	
B08	CASE PCB	3611140200	HIPS	1	
B09	HOLDER DIAL	3613050600	ABS	1	
B10	SCREW TAPPING	7122401611	T2S TRS 4x16 MFZN	4	
B11	KNOB DIAL	3613405110	ABS+SPRAY	1	
B12	SCREW TAPPING	7122401608	T2S TRS 4x16 SUS	2	
B13	SCREW TAPPING	7122401211	T2S TRS 4x12 MFZN	2	

## ■ PANEL FRONT AS (DWD-F1X3X SERIES)

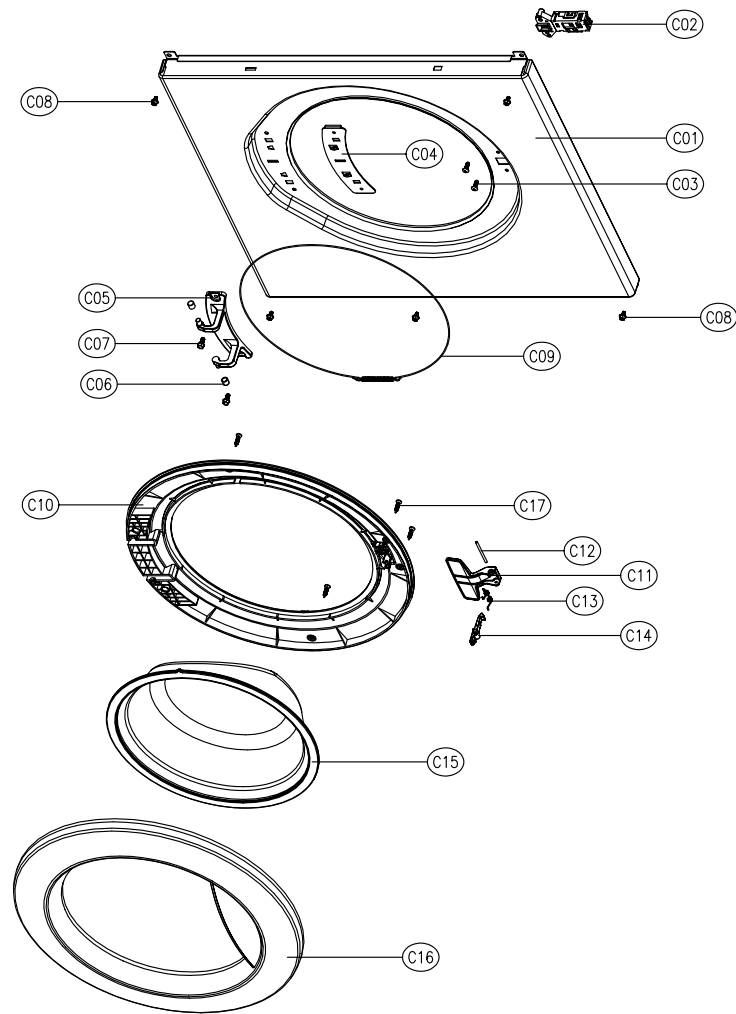


No.	PART NAME	PART CODE	SPECIFICATION	Q'TY	REMARK
B01	PANEL F	3614285800	ABS	1	DWD-F1X31(2)
		3614285810	ABS+SPRAY		DWD-F1X33
B02	BUTTON POWER	3616635300	ABS	1	DWD-F1X31
		3616635310	ABS+SPRAY		DWD-F1X32(3)
B03	WINDOW DIAL	3615504200	ABS-TR	1	
B04	BUTTON SELECT	3616635400	ABS	1	DWD-F1X31
		3616635410	ABS+SPRAY		DWD-F1X32(3)
B05	WINDOW DISPLAY	3615504300	ABS-TR	1	
B06	PCB AS	PRPSSWB1-	DWD-F1XXX SERIES	1	Refer to Detailed Part Code of PCB AS
B07	HOLDER DISPLAY	3613051700	HIPS	1	
B08	CASE PCB	3611143200	HIPS	1	
B09	HOLDER DIAL	3613051500	HIPS	1	
B10	SCREW TAPPING	7122401611	T2S TRS 4#16 MFZN	4	
B11	KNOB DIAL	3613405210	ABS+SPRAY	1	
B12	SCREW TAPPING	7122401608	T2S TRS 4#16 SUS	2	
B13	SCREW TAPPING	7122401211	T2S TRS 4#12 MFZN	2	

## ■ Detailed Part Code of PCB AS

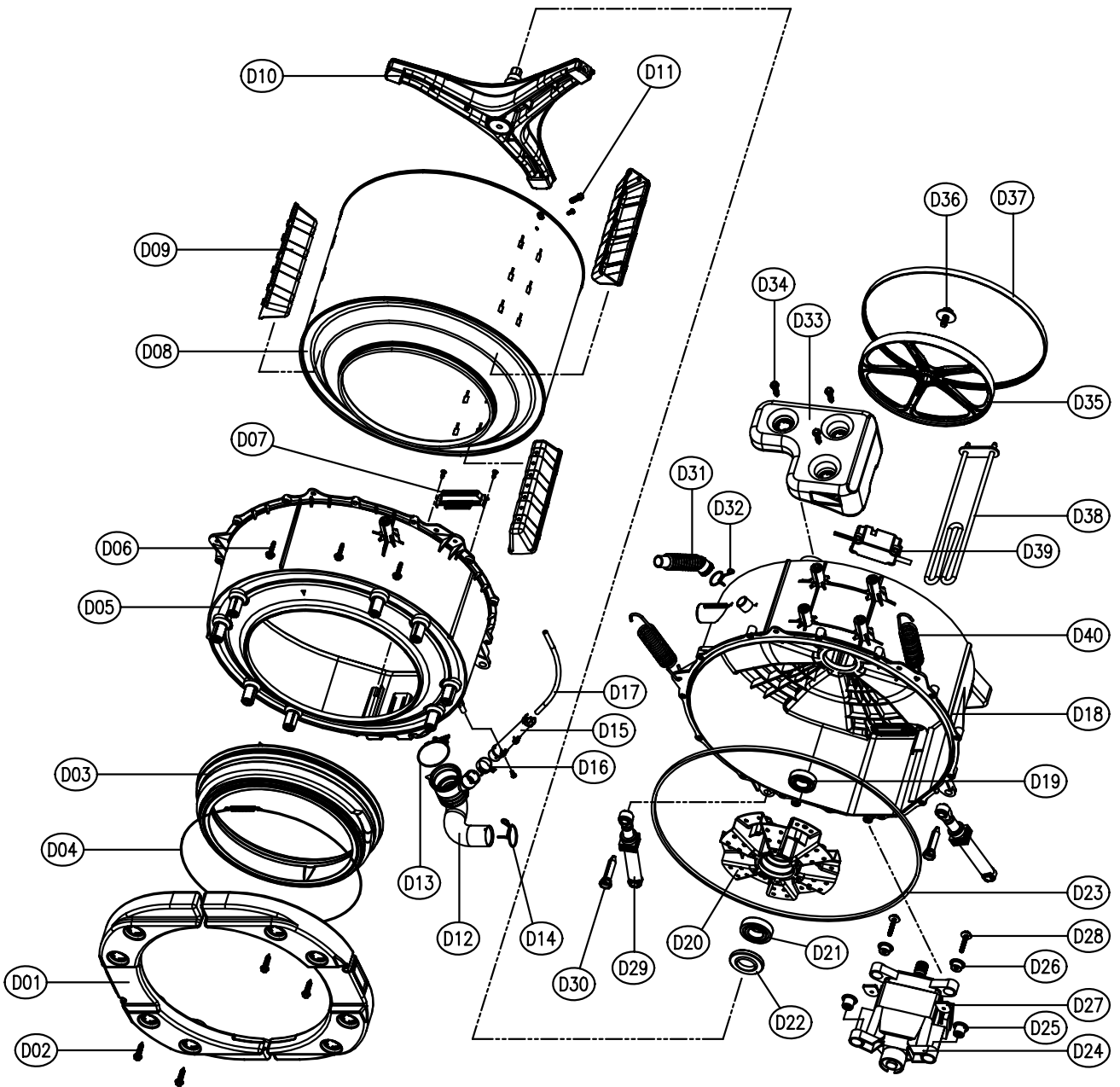
No.	PART NAME	PART CODE	SPECIFICATION	Q'TY	REMARK	
B06	PCB AS	PRPSSWB100	DWD-F101, PANA MICOM, EC, 1000RPM, HOT V/V, BB	1	1st PANEL	
		PRPSSWB101	DWD-F101, PANA MICOM, EC, 1000RPM, HOT V/V, NON-BB			
		PRPSSWB102	DWD-F101, PANA MICOM, EC, 1000RPM, COLD V/V, BB			
		PRPSSWB103	DWD-F101, PANA MICOM, EC, 1000RPM, COLD V/V, NON-BB			
		PRPSSWB104	DWD-F101, PANA MICOM, EC, 1000RPM, HOT V/V, BB			
		PRPSSWB105	DWD-F101, PANA MICOM, EC, 1000RPM, HOT V/V, NON-BB			
		PRPSSWB106	DWD-F101, PANA MICOM, EC, 1000RPM, COLD V/V, BB			
		PRPSSWB107	DWD-F101, PANA MICOM, EC, 1000RPM, COLD V/V, NON-BB			
		PRPSSWB108	DWD-F101, PANA MICOM, EC, 1000RPM, HOT V/V, BB			
		PRPSSWB109	DWD-F101, PANA MICOM, EC, 1000RPM, HOT V/V, NON-BB			
		PRPSSWB110	DWD-F101, PANA MICOM, EC, 1000RPM, COLD V/V, BB			
		PRPSSWB111	DWD-F101, PANA MICOM, EC, 1000RPM, COLD V/V, NON-BB			
		PRPSSWB112	DWD-F101, PANA MICOM, EC, 1000RPM, HOT V/V, BB		2nd PANEL	
		PRPSSWB113	DWD-F101, PANA MICOM, EC, 1000RPM, HOT V/V, NON-BB			
		PRPSSWB114	DWD-F101, PANA MICOM, EC, 1000RPM, COLD V/V, BB			
		PRPSSWB115	DWD-F101, PANA MICOM, EC, 1000RPM, COLD V/V, NON-BB			
		PRPSSWB120	DWD-F101, PANA MICOM, EC, 1000RPM, HOT V/V, BB			
		PRPSSWB121	DWD-F101, PANA MICOM, EC, 1000RPM, HOT V/V, NON-BB			
		PRPSSWB122	DWD-F101, PANA MICOM, EC, 1000RPM, COLD V/V, BB			
		PRPSSWB123	DWD-F101, PANA MICOM, EC, 1000RPM, COLD V/V, NON-BB			
		PRPSSWB124	DWD-F101, PANA MICOM, EC, 1200RPM, HOT V/V, BB			
		PRPSSWB125	DWD-F101, PANA MICOM, EC, 1200RPM, HOT V/V, NON-BB			
		PRPSSWB126	DWD-F101, PANA MICOM, EC, 1200RPM, COLD V/V, BB			
		PRPSSWB127	DWD-F101, PANA MICOM, EC, 1200RPM, COLD V/V, NON-BB			
		PRPSSWB128	DWD-F101, PANA MICOM, EC, 1000RPM, HOT V/V, BB			
		PRPSSWB129	DWD-F101, PANA MICOM, EC, 1000RPM, HOT V/V, NON-BB			
		PRPSSWB130	DWD-F102, PANA MICOM, NON-EC, 1000RPM, COLD V/V, BB			
		PRPSSWB131	DWD-F102, PANA MICOM, NON-EC, 1000RPM, COLD V/V, NON-BB			
		PRPSSWB132	DWD-F122, PANA MICOM, NON-EC, 1200RPM, HOT V/V, BB			
		PRPSSWB133	DWD-F122, PANA MICOM, NON-EC, 1200RPM, HOT V/V, NON-BB			
		PRPSSWB134	DWD-F122, PANA MICOM, NON-EC, 1200RPM, COLD V/V, BB			
		PRPSSWB135	DWD-F122, PANA MICOM, NON-EC, 1200RPM, COLD V/V, NON-BB			
		PRPSSWB136	D-FU102, AUSTRALIA, PANA, NON-EC, 1000RPM, C, B			3rd PANEL
		PRPSSWB137	D-FU122, AUSTRALIA, PANA, NON-EC, 1200RPM, C, B			
		PRPSSWB140	DWD-F103, PANA MICOM, EC, 1000RPM, HOT V/V, BB			
		PRPSSWB141	DWD-F103, PANA MICOM, EC, 1000RPM, HOT V/V, NON-BB			
PRPSSWB142	DWD-F103, PANA MICOM, EC, 1000RPM, COLD V/V, BB					
PRPSSWB143	DWD-F103, PANA MICOM, EC, 1000RPM, COLD V/V, NON-BB					
PRPSSWB144	DWD-F123, PANA MICOM, EC, 1200RPM, HOT V/V, BB					
PRPSSWB145	DWD-F123, PANA MICOM, EC, 1200RPM, HOT V/V, NON-BB					
PRPSSWB146	DWD-F123, PANA MICOM, EC, 1200RPM, COLD V/V, BB					
PRPSSWB147	DWD-F123, PANA MICOM, EC, 1200RPM, COLD V/V, NON-BB					
PRPSSWB148	DWD-F103, PANA MICOM, NON-EC, 1000RPM, HOT V/V, BB					
PRPSSWB149	DWD-F103, PANA MICOM, NON-EC, 1000RPM, HOT V/V, NON-BB					
PRPSSWB150	DWD-F103, PANA MICOM, NON-EC, 1000RPM, COLD V/V, BB					
PRPSSWB151	DWD-F103, PANA MICOM, NON-EC, 1000RPM, COLD V/V, NON-BB					
PRPSSWB152	DWD-F123, PANA MICOM, NON-EC, 1200RPM, HOT V/V, BB					
PRPSSWB153	DWD-F123, PANA MICOM, NON-EC, 1200RPM, HOT V/V, NON-BB					
PRPSSWB154	DWD-F123, PANA MICOM, NON-EC, 1200RPM, COLD V/V, BB					
PRPSSWB155	DWD-F123, PANA MICOM, NON-EC, 1200RPM, COLD V/V, NON-BB					
PRPSSWB156	D-FU103, AUSTRALIA, PANA MICOM, NON-EC, COLD V/V, NON-BB					

## ■ CABINET FRONT AS



No.	PART NAME	PART CODE	SPECIFICATION	Q'TY	REMARK
C01	CABINET FRONT	3610811210	PCM, SGCC 0.8T, SILVER	1	DWD-F1XX3
		3610811220	SECD 0.7T		
C02	SWITCH DOOR LOCK	3619046800	250V16A, ROLD, BI-METAL	1	
C03	SCREW TAPPING	7122401208	T2S TRS 4X12 SUS	2	
C04	PLATE HINGE SUPPORT	3614531900	SGCC T1.6	1	
C05	HINGE DOOR	3612902800	ZNDC	1	
C06	CAP HINGE DOOR	3610916500	POM	2	
C07	SCREW TAPPING	3616030000	F/L BOLT(SE) 5*12 SUS	2	
C08	SCREW TAPPING	3616029950	TTS"S" HEX F/L 4*8	6	
C09	CLAMP DOOR AS	3611204800	HSWR D=1.4	1	
C10	FRAME DOOR I	3612205200	PP	1	
C11	HANDLE DOOR	3612608600	ABS	1	
C12	PIN HANDLE	3618200200	SUS304, D3, L48	1	
C13	SPRING HOOK	3615114600	SUS D1.4	1	
C14	HOOK DOOR	3613100700	ZNDC	1	
C15	DOOR GLASS	361A110700	GLASS PI300	1	
C16	FRAME DOOR O	3612205100	ABS	1	DWD-F1XX1
		3612205120	CR3		
		3612205130	ABS+UV SPRAY		DWD-F1X14
C17	SCREW TAPPING	7115402008	T1S FLT 4*20 SUS	6	

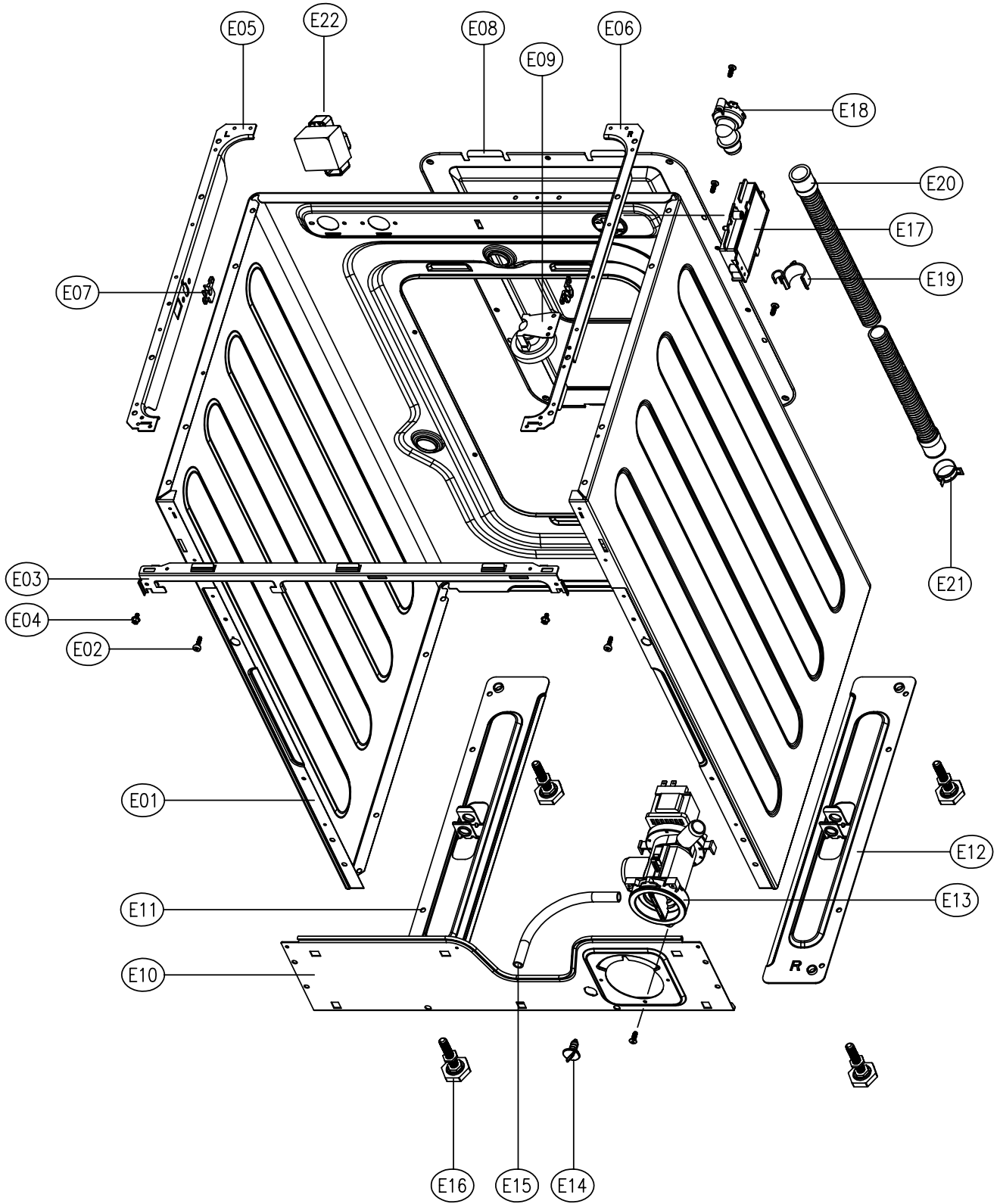
■ TUB ASS'Y





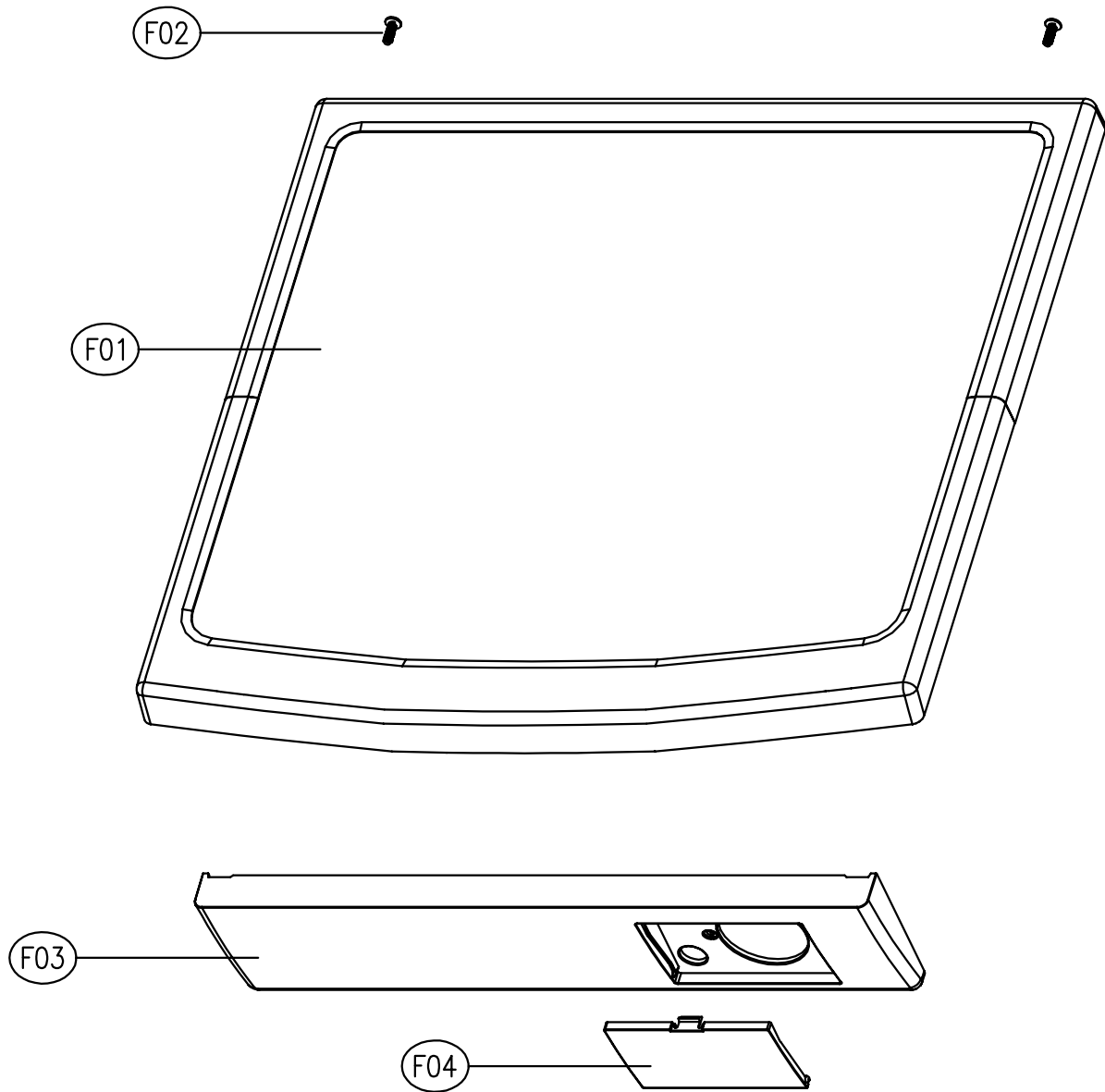
No.	PART NAME	PART CODE	SPECIFICATION	Q'TY	REMARK
D01	BALANCER WEIGHT F L/R	3616106300	FRONT, 6.0kg	2	
D02	SPECIAL SCREW(BALANCER)	3616029400	SWCH 8.5X30	8	
D03	GASKET	3612321400	EPDM	1	
D04	CLAMP GASKET AS	3611204500	HSWR D=1.8	1	
D05	TUB FRONT	3618821001	FRPP FH7300GM	1	
D06	SPECIAL SCREW(TUB)	3616029800	SWCH 6.5X30	14	
D07	FIXTURE HEATER	3612007300	SUS 0.7T 440x45	1	
D08	DRUM SUB AS	3617004001	SUS 0.5T	1	
D09	LIFTER WASH	361A400400	PP	3	OPTION
		361A400410	NANO		
D10	SPIDER AS	361A300500	ALDC+SM45C	1	
D11	SPECIAL SCREW(SPIDER)	3616029500	SUS430 8x25	3	
D12	HOSE DRAIN	3613267300	EPDM	1	
D13	CLAMP AS	3611203200	ID=60,WIRE+GUIDE+BOLT+NUT	1	
D14	CLAMP HOSE I	3611201400	HSW3, D2.6, MFZN, D=38	1	
D15	AIR TRAP	361A500101	PP	1	
D16	CLAMP HOSE	3611204700	D27	1	
D17	HOSE AIR	3613268600	ID=4, OD=8, L=700	1	
D18	TUB REAR	3618821101	FRPP FH7300GM	1	
D19	BEARING OUTER	3616303200	6205Z FAG	1	
D20	BEARING HOUSING	3616303300	ALDC	1	
D21	BEARING INNER	3616303100	6206Z FAG	1	
D22	WATER SEAL	361A600100	NBR	1	
D23	GASKET TUB	3612321600	EPDM L=1675	1	
D24	UNIT MOTOR UNIVERSAL	36189L4H00	220VDC50HZ 2POLES PI340	1	
D25	CUSHION MOTOR FIX(A)	3611563900	BUTYLE	2	
D26	CUSHION MOTOR FIX(B)	3611564000	BUTYLE	2	
D27	SPECIAL WASHER	3616030400	T=4.0 M6	2	
D28	SPECIAL BOLT	3616030900	M6x43, SPRING+PLATE WASER	2	
D29	DAMPER FRICTION	361A700120	120N, AKS, ST=170-160, DL=197.5	2	
D30	DAMPER PIN	361A700200	AKS, D=14.5	2	
D31	HOSE VENT	3613267100	EPDM	1	
D32	CLAMP HOSE	3611204700	D27	1	
D33	BALANCER WEIGHT T	3616106500	TOP, 6.0kg	1	
D34	SPECIAL SCREW(BALANCER)	3616029400	SWCH 8.5x30	3	
D35	PULLEY	3618433200	ALDC	1	
		3618433500	PA6+GF30%, KEP 1330GF		
D36	SPECIAL BOLT AS	3616029600	SWCH M10xL30, F/L BOLT	1	
D37	BELT V	3616591100	MEGADTNE 5RIB, POLYURETHANE	1	
D38	HEATER WASH	3612800800	220V 2KW 24.2Ω 8.6W/SQ	1	
		3612801200	230V 2KW 26.45Ω 8.6W/SQ		
		3612801500	240V 2KW 28.8Ω 8.6W/SQ		
D39	UNIT BUBBLE PUMP	36189L4120	220-240V DBK-204DB	1	OPTION
D40	SPRING SUSPENSION	3615114500	D3.2, L158	2	

■ CABINET AS



No.	PART NAME	PART CODE	SPECIFICATION	Q'TY	REMARK
E01	CABINET	3610811100	SGCC, T0.8, PAINTING	1	
E02	SPECIAL SCREW	3616029100	M4x12.5, MACHINE	2	
E03	FRAME UPPER	3612205800	SGCC T1.2 55X580	1	
E04	SCREW TAPPING	3616029950	TTS"S" HEX F/L 4X8	4	
E05	FRAME TOP-L	3612205600	SGCC T1.6 52x500	1	
E06	FRAME TOP-R	3612205700	SGCC T1.6 52x500	1	
E07	STOPPER SPRING	3615202200	POM	2	
E08	COVER BACK AS	3611425510	SGCC 0.35T + EPDM 2T	1	
E09	SENSOR PRESSURE	3614825300	5V DRUM DL-DW11 INLET 90	1	
E10	FRAME LOWER	3612205500	SGCC T1.2 160X580	1	
E11	BASE U-L	3610392200	SGCC T1.6 100x500	1	
E12	BASE U-R	3610392300	SGCC T1.6 100x500	1	
E13	UNIT DRAIN PUMP AS	36189L4F10	220-240V/50Hz B20-6 DRUM	1	
		36189L4E10	220V/60Hz B20-5 DRUM		
E14	CAP WATER REMAIN	3610916800	PP	1	
E15	HOSE WATER REMAIN	3613267800	EPDM, ID8.5, L200	1	
E16	LEG ADJUST AS	3617703810	MFZN M10x1.25 + BUTYLE	4	
E17	EMI FILTER	3611908600	NOISE FILTER(TRIAC TYPE)	1	
E18	CUFF DRAIN HOSE	3616802500	PP	1	
E19	GUIDE DRAIN HOSE	3612510400	PP	1	
E20	HOSE DRAIN I AS	3613268400	L=870	1	
E21	CLAMP HOSE	3611204700	D27	1	
E22	REACTOR AS	3615800100		1	OPTION

■ PLATE T AS + PANEL LOWER AS

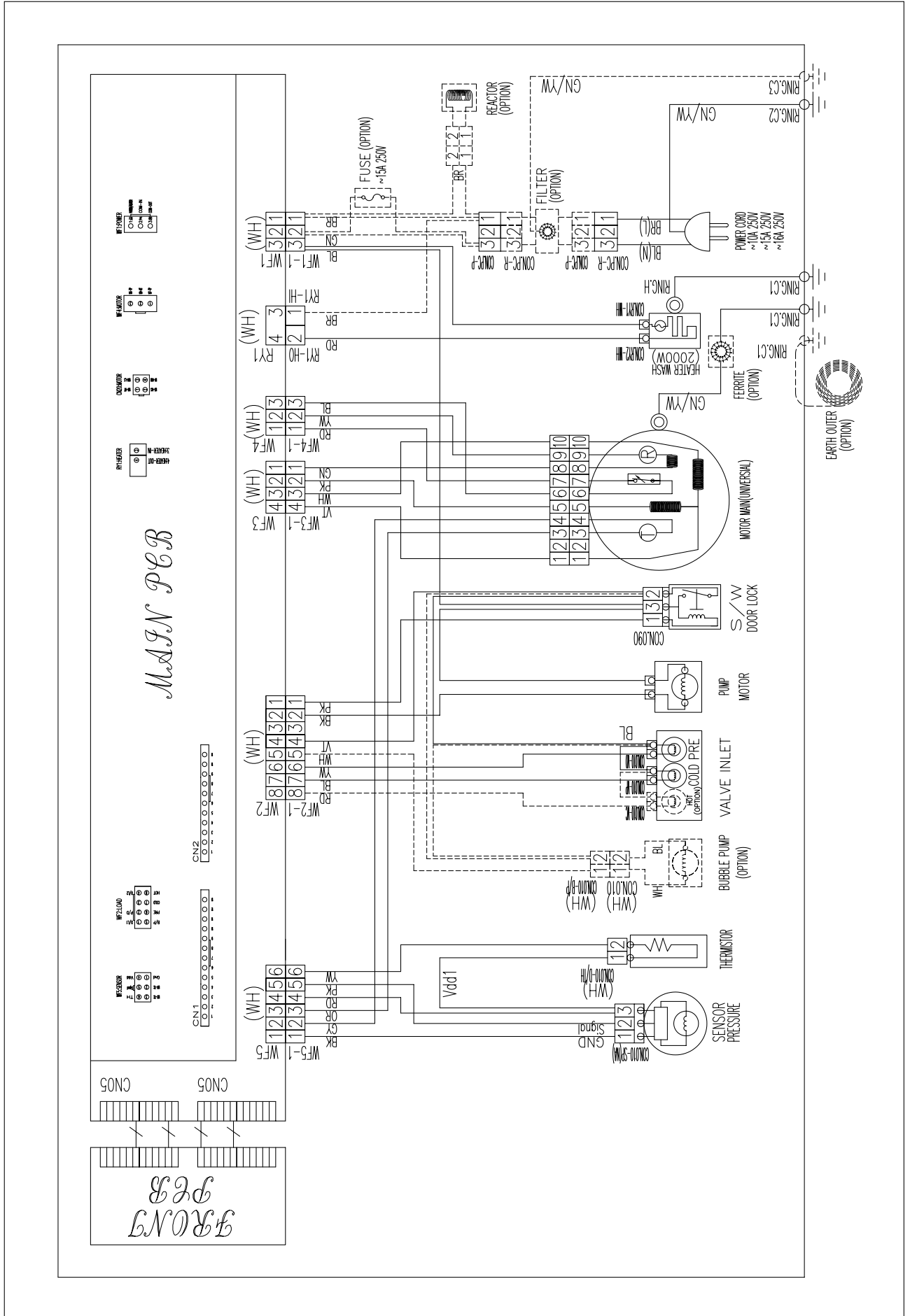


No.	PART NAME	PART CODE	SPECIFICATION	Q'TY	REMARK
F01	PLATE T AS	3614532900	HIPS, MFC, WH	1	DWD-F1X11(2)
		3614532910	ABS+UV SPRAY, MFC, SILVER		DWD-F1X13
		3614532920	HIPS, MFC, WH		DWD-F1X21(2)
		3614532930	ABS+UV SPRAY, MFC, SILVER		DWD-F1X23
		3614533300	HIPS, MFC, WH		DWD-F1X31(2)
		3614533310	ABS+UV SPRAY, MFC, SILVER		DWD-F1X33
F02	SCREW TAPPING	7122401411	T2S TRS 4X14 MFZN	2	
F03	PANEL LOWER	3614282801	HIPS	1	
F04	COVER PUMP FILTER	3611425801	HIPS	1	

MESSAGE	ERROR	CAUSE	SOLUTION
IE	WATER INLET ERROR	The water tap is closed.	Open the water tap.
		The filter of the valve inlet is clogged.	Clean the filter of the valve inlet.
		The valve inlet is an inferior product or broke down.	Change the valve inlet.
		The water level sensor (sensor pressure) is an inferior product or broke down.	Change the water level sensor (sensor pressure).
		The drain motor works during water supply.	Change the drain motor.
		The PCB ASS'Y does not check the water level.	Change the PCB ASS'Y.
OE	DRAIN ERROR	The drain hose is kinked or clogged.	Clean and straighten the drain hose.
		The drain motor is an inferior product.	Change the drain motor.
		The valve inlet works during drain.	Change the valve inlet
		The water level sensor is an inferior product.	Change the water level sensor.
		The PCB ASS'Y does not check the water level.	Change the PCB ASS'Y.
UE	UNBALANCE ERROR	The laundry is concentrated to one side of the drum during spin.	Rearrange the laundry.
LE	DOOR OPEN ERROR	The Start/Hold button is pressed while the door is opened.	Close the door.
		The switch door lock is an inferior product.	Change the switch door lock.
		The PCB ASS'Y does not check the door lock.	Change the PCB ASS'Y.
E2	OVERFLOW ERROR	The water is supplied continuously due to an inferior valve inlet.	Change the valve inlet.
		The valve inlet is normal, but the water level sensor (sensor pressure) is inferior.	Change the water level sensor (sensor pressure).
		The drain motor dose not work. (The drain motor is an inferior product or broke down.)	Change the drain motor.
E4	LEAKAGE ERROR	Water leaks from the tub or the hose drain.	Check the leak of the tub or the hose drain. Then change the tub or the hose drain.
E5	HIGH VOLTAGE ERROR	The laundry is jammed between the gasket and the drum.	Rearrange the laundry.
		The PCB ASS'Y is an inferior product.	Change the PCB ASS'Y.
E6	EMG ERROR	The laundry is jammed between the gasket and the drum.	Rearrange the laundry.
		The motor is an inferior product.	Change the motor.
		The PCB ASS'Y is an inferior product.	Change the PCB ASS'Y.
E8	MOTOR ERROR	The motor is not normally connected.	Check the connector of the motor.
		The motor does not work. (The motor is an inferior product or broke down.)	Change the motor.
E9	SENSOR PRES-SURE ERROR	The water level sensor is an inferior product.	Change the water level sensor.
H2	THERMISTOR WASH ERROR	The thermistor wash is an inferior product or broke down.	Change the thermistor wash.
		The thermistor wash is not connected normally.	Check the connector of the thermistor wash.
H4	THERMISTOR WASH OVERHEATING ERROR	The heater worked without the water in the tub.	Check the water level.
		The thermistor wash is an inferior product or broke down.	Change the thermistor wash.

MESSAGE	ERROR	CAUSE	SOLUTION
H5	WATER TEMP. ERROR	The water temp. is over 45°C in delicate & wool course. (The thermistor wash is an inferior product or broke down.)	Change the thermistor wash.
H6	HEATER WASH ERROR	The heater wash dose not work. (The water temp. doesn't rise over 2°C during 15min.)	Change the heater wash.
H8	HEATER WASH OVERHEATING ERROR	The heater worked without the water in the tub.	Check the water level and the heater wash.
lb	IGBT ERROR	The PCB ASS'Y is an inferior product.	Change the PCB ASS'Y.
PFE	PUMP FILTER ERROR	The drain pump filter is clogged.	Clean the drain pump filter.
		The drain pump does not work during spin.	Change the drain pump.
		The large amount of detergent was used.	Use the proper amount of detergent.
		The drain hose is placed higher than 1m above the floor.	Place the drain hose 1m below the floor

# 10. WIRING DIAGRAM



**DAEWOO**

**DAEWOO ELECTRONICS CORP.**  
686, AHYEON-DONG MAPO-GU SEOUL, KOREA  
C.P.O. BOX 8003 SEOUL, KOREA  
TELEX: DWELEC K28177-8  
CABLE: "DAEWOOELEC"

PRINTED DATE: Mar. 2005

S/M No. :