

# FOR THE USER

# AKAI



## PROTECT YOUR WARRANTY

This unit must be installed by a registered,  
licensed installer as required by  
Government regulations.



Model Number TEM-35CHSABH

## Reverse cycle Split System Air Conditioner Instruction manual

After Sales Support  
TEL: 1300 886 649



N13275

## Contents

---

2	Safety rules and recommendations for the installer	
3	Safety rules and recommendations for the user	
5	Safety rules and prohibitions	
6	Parts list	
7	Indoor unit display	
8	Emergency function and Auto-Restart function	
9	Remote control and remote control display	
10	Preliminary instructions	How to insert the batteries DIP switch on position function
11	Modes of operation	Swing control of the air flow
13		Cooling mode Heating mode
14		Timer mode - Timer ON Timer mode - Timer OFF
15		Fan mode Dry mode
16		Feel mode Sleep mode
17	Protection	

## Safety rules and recommendations for the installer

---

- Read this guide before installing and using the appliance.
- During the installation of the indoor and outdoor units, access to the working area should be forbidden to children.  
Unforeseeable accidents could happen.  
Make sure that the base of the outdoor unit is firmly fixed.
- Check that air cannot enter the refrigerant system and check for refrigerant leaks when moving the air conditioner.
- Carry out a test cycle after installing the air conditioner and record the operating data.
- The ratings of the fuse installed in the built in control unit are 3.15A / 250V for 220V type and 3.15A/125V for 110V type.
- The user must protect the indoor unit with a fuse of suitable capacity for the maximum input current or with another overload protection device.
- Ensure that the mains voltage corresponds to that stamped on the rating plate. Keep the switch or power plug clean. Insert the power plug correctly and firmly into the socket, thereby avoiding the risk of electric shock or fire due to insufficient contact.
- Check that the socket is suitable for the plug, otherwise have the socket changed.
- Do not install the appliance at a distance of less than 50cm from inflammable substances (alcohol, etc.). Or from pressurised containers (e.g. spray cans).
- If the appliance is used in areas without the possibility of ventilation, precautions must be taken to prevent any leaks of refrigerant gas from remaining in the environment and creating a danger of fire.
- The packaging materials are recyclable and should be disposed of in the separate waste bins. Take the air conditioner at the end of its useful life to a special waste collection centre for disposal.
- Only use the air conditioner as instructed in this booklet. These instructions are not intended to cover every possible condition and situation. As with any electrical household appliance, common sense and caution are therefore always recommended for installation, operation and maintenance.
- The appliance must be installed in accordance with applicable national regulations.
- Before accessing the terminals, all the power circuits must be disconnected from the power supply.

## Safety rules and recommendations for the user

---

- Do not try to install the conditioner alone; always contact specialised technical personnel.
- Cleaning and maintenance must be carried out by specialised technical personnel. In any case disconnect the appliance from the mains electricity supply before carrying out any cleaning or maintenance.
- Ensure that the mains voltage corresponds to that stamped on the rating plate. Keep the switch or power plug clean. Insert the power plug correctly and firmly into the socket, thereby avoiding the risk of electric shock or fire due to insufficient contact.
- Do not pull out the plug to switch off the appliance when it is in operation, since this could create a spark and cause a fire, etc.
- Never remain directly exposed to the flow of cold air for a long time. The direct and prolonged exposition to cold air could be dangerous for your health. Particular care should be taken in the rooms where there are children, old or sick people.
- If the appliance gives off smoke or there is a smell of burning, immediately cut off the power supply and contact the Service Centre.
- Have repairs carried out only by an authorised Service Centre of the manufacturer. Incorrect repair could expose the user to the risk of electric shock, etc. The prolonged use of the device in such conditions could cause fire or electrocution.
- This appliance has been made for air conditioning domestic environments and must not be used for any other purpose, such as for drying clothes, cooling food, etc.
- The packaging materials are recyclable and should be disposed of in the separate waste bins. Take the air conditioner at the end of its useful life to a special waste collection centre for disposal.
- Always use the appliance with the air filter mounted. The use of the conditioner without air filter could cause an excessive accumulation of dust or waste on the inner parts of the device with possible subsequent failures.
- The user is responsible for having the appliance installed by a qualified technician, who must check that it is earthed in accordance with current legislation and insert a thermomagnetic circuit breaker.

- Unhook the automatic switch if you foresee not to use the device for a long time. The airflow direction must be properly adjusted.
- The flaps must be directed downwards in the heating mode and upwards in the cooling mode.
- Only use the air conditioner as instructed in this booklet. These instructions are not intended to cover every possible condition and situation. As with any electrical household appliance, common sense and caution are therefore always recommended for installation, operation and maintenance.
- Ensure that the appliance is disconnected from the power supply when it will remain inoperative for a long period and before carrying out any cleaning or maintenance.
- Selecting the most suitable temperature can prevent damage to the appliance.

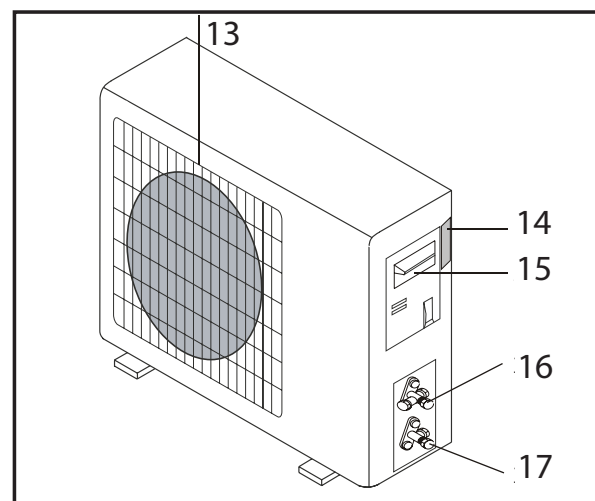
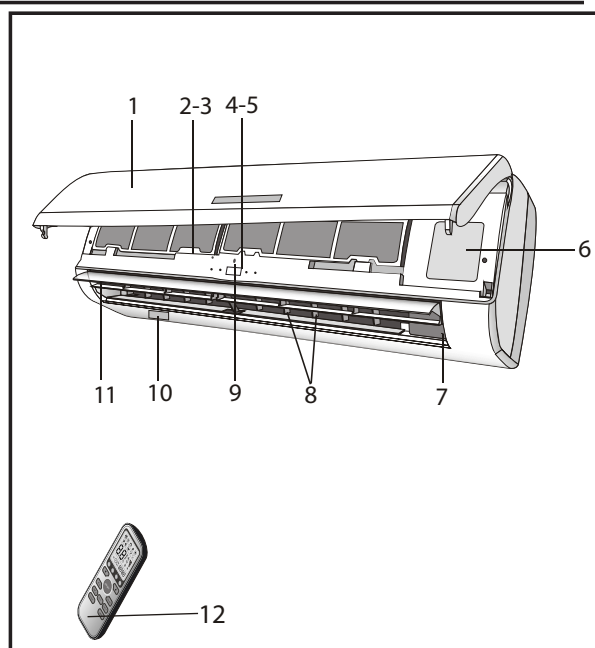
## Safety rules and prohibitions

---

- Do not bend, tug or compress the power cord as this could damage it. Electrical shocks or fire are usually due to a damaged power cord. Only specialised technical personnel must replace a damaged power cord.
- Do not use extensions or gang modules.
- Do not touch the appliance when barefoot or parts of the body are wet or damp.
- Do not obstruct the air inlet or outlet of the indoor or the outdoor unit. The obstruction of these openings causes a reduction in the operative efficiency of the conditioner with possible consequent failures or damages.
- In no way alter the characteristics of the appliance.
- Do not install the appliance in environments where the air could contain gas, oil or sulphur or near sources of heat.
- This appliance is not intended for use by persons (including children) with reduced physical, sensory or mental capabilities, or lack of experience and knowledge, unless they have been given supervision or instruction concerning use of the appliance by a person responsible for their safety.
- Do not climb onto or place any heavy or hot objects on top of the appliance.
- Do not leave windows or doors open for long when the air conditioner is operating.
- Do not direct the airflow onto plants or animals.
- A long direct exposition to the flow of cold air of the conditioner could have negative effects on plants and animals.
- Do not put the conditioner in contact with water. The electrical insulation could be damaged and thus causing electrocution.
- Do not climb onto or place any objects on the outdoor unit.
- Never insert a stick or similar object into the appliance. It could cause injury.
- Children should be supervised to ensure that they do not play with the appliance. If the supply cord is damaged, it must be replaced by the manufacturer, its service agent or similarly qualified persons in order to avoid a hazard.

## Parts list

Indoor Unit	
1	Front panel
2	Air filter
3	Optional filter (if installed)
4	LED Display
5	Signal receiver
6	Terminal block cover
7	Ionizer generator (if installed)
8	Deflectors
9	Emergency button
10	Indoor unit rating label
11	Airflow direction flaps
12	Remote control
Outdoor Unit	
13	Air outlet grille
14	Outdoor unit rating label
15	Cover
16	gas valve
17	liquid valve

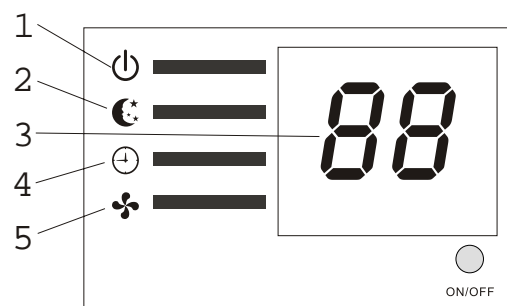
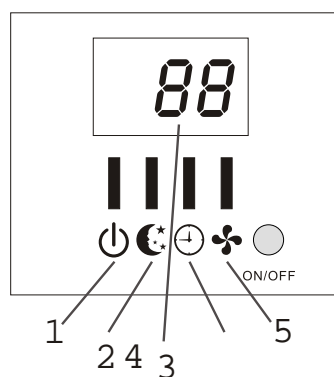
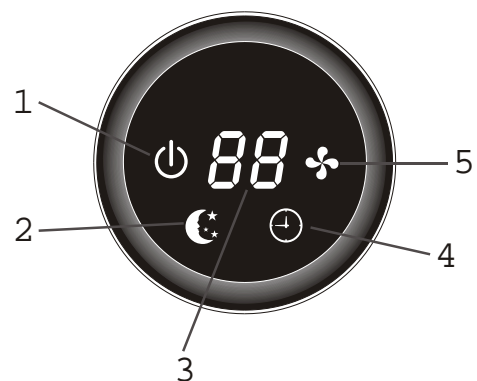
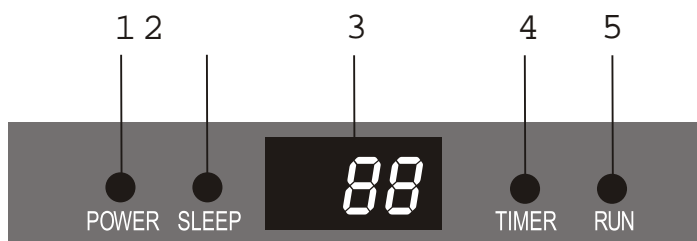


## WALL AIR-CONDITIONER

- The conditioner is made up of two or more units connected between themselves through copper pipes (properly insulated) and an electrical connecting cable.
- The indoor unit is installed on the walls of the room to be conditioned.
- The outdoor unit is installed on the floor or on the wall on suitable brackets.
- Technical data of the air conditioner are printed on the labels placed on the indoor and outdoor units.
- The remote control has been designed for an easy and fast use.

**NOTE:** The above figures are only intended to be a simple diagram of the appliance and may not correspond to the appearance of the units that have been purchased.

## Indoor unit display



No.	Led		Function
1	POWER	⏻	Shows that the unit is powered
2	SLEEP	☾	SLEEP mode
3	Temperature display (if present)	88	Indicates the set temperature in C° or F°
4	TIMER	⌚	TIMER mode
5	RUN	🌀	Unit working

The shape and position of switches and indicators may vary according to the model, but their function is the same.



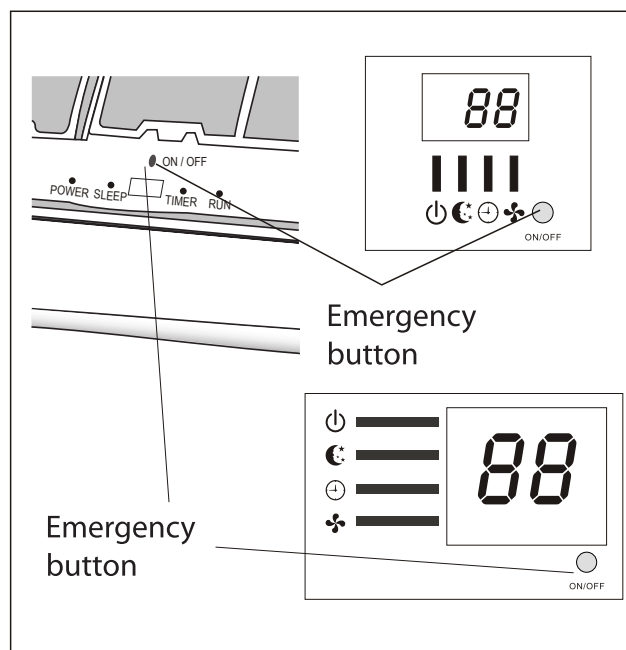
## Emergency function and Auto-Restart function

### Auto-restart function

The appliance is preset to auto-restart function by manufacturer. With this function, the air conditioner can keep the selected settings after a blackout or a voltage drop.

To deactivate the AUTO-RESTART function, proceed as follows:

1. Switch the air conditioner off and remove the plug.
2. Press the emergency button meanwhile plug it in.
3. Keep pressing the emergency button for more than 10 seconds until you hear four short beeps from the unit. The AUTO-RESTART function is off. To activate the AUTO-RESTART function, follow the same procedure until you hear three short beeps from the unit.

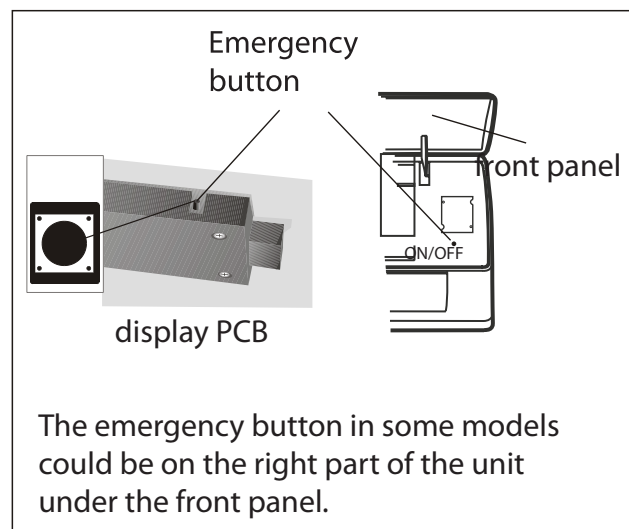


### Emergency function

If the remote control is lost, proceed as follows:

Lift the unit's front panel to reach the emergency button of the air conditioner

1. If you press the button once (one beep), the air conditioner will work in forced cooling function.
2. If you press the button twice (two beeps), the unit will work in forced heating function.
3. To switch off the unit, you just need to press the button again (a single long beep). After 30 minutes in forced function, the air conditioner will automatically start working in FEEL mode. The FEEL function is described in page 18.



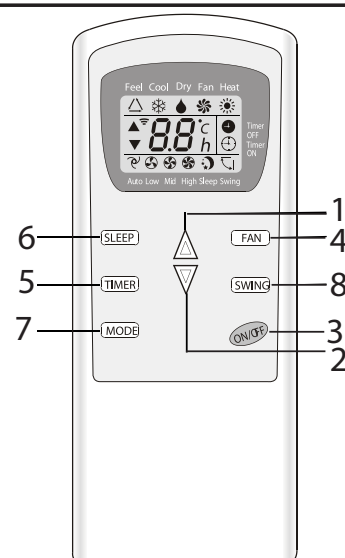
The emergency button in some models could be on the right part of the unit under the front panel.

The shape and position of the emergency button may vary according to the model, but their function is the same.

**NOTE:** The external static pressure of the heat pumps is 0Pa for all models.

## Remote control

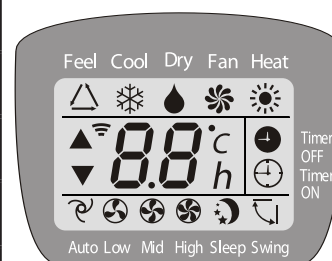
1	▲ temp up	Increase the temperature or time by 1 unit
2	▼ temp down	Decrease the temperature or time by 1 unit
3	ON/OFF	To switch the conditioner ON and OFF
4	FAN	To select the fan speed
5	TIMER	To set automatic switching ON/OFF
6	SLEEP	To activate the SLEEP function
7	MODE	To select the mode of operation
8	SWING	To control the deflectors



**NOTE:** The unit confirms the correct reception of each press button with a beep.

## Remote control display

1	△	FEEL mode indicator
2	❄️	COOLING indicator
3	💧	Dehumidifying indicator
4	🌀	Fan only operation indicator
5	☀️	Heating indicator
6	📶	Signal reception
7	⌛	Timer OFF indicator
8	🕒	Timer ON indicator
9	🌀	Auto fan indicator
10	🌀	Low fan speed indicator
11	🌀	Medium fan speed indicator
12	🌀	High fan speed indicator
13	🌙	SLEEP indicator
14	↺	Deflector SWING indicator



## Preliminary Instructions

### How to insert the batteries

Remove the cover from the battery compartment, by sliding it in the direction of the arrow. Insert the new batteries, ensuring that the (+) and (-) directions are correct.

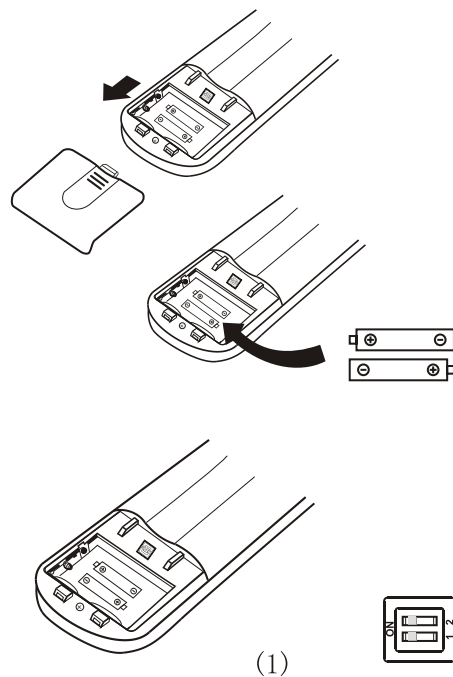
Refit the cover by sliding it into place.

- Use 2 LRO 3 AAA (1.5V) batteries. Do not use rechargeable batteries. Replace the old batteries with new ones of the same type when the display is no longer legible.

The remote control batteries must be disposed of in accordance with the applicable laws in force in the country of use.

### Refer to picture 1:

- When you insert the batteries for the first time in the remote control or if you change them, you will see a DIP switch under the back cover.



### DIP switch on position Function

C	The display is adjusted in degree Celsius
F	The display is adjusted in degree Fahrenheit.
COOL	The remote control is adjusted in only cooling mode
HEAT	The remote control is adjusted in only heating mode

**NOTE:** After adjusting the function, you need to take out the batteries and repeat again the procedure described above.

## Refer to picture 2:

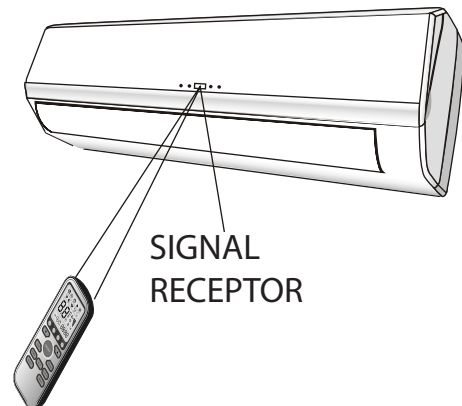
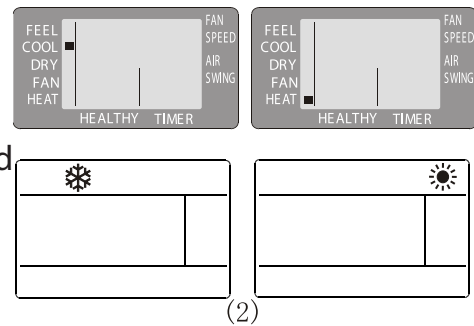
When you insert the batteries for the first time in the remote control or if you change them, you need to program the remote control of only cooling or heat pump air conditioners.

This is very easy: as soon as you insert the batteries, the symbols ❄️ ( COOL ■ ) and ☀️ ( HEAT ■ ) start flashing. If you push any button when the symbol ❄️ ( COOL ■ ) is displayed, the remote control is adjusted in only cooling mode.

If you push whatever button when the symbol ☀️ ( HEAT ■ ) is displayed, the remote control is adjusted in heating mode.

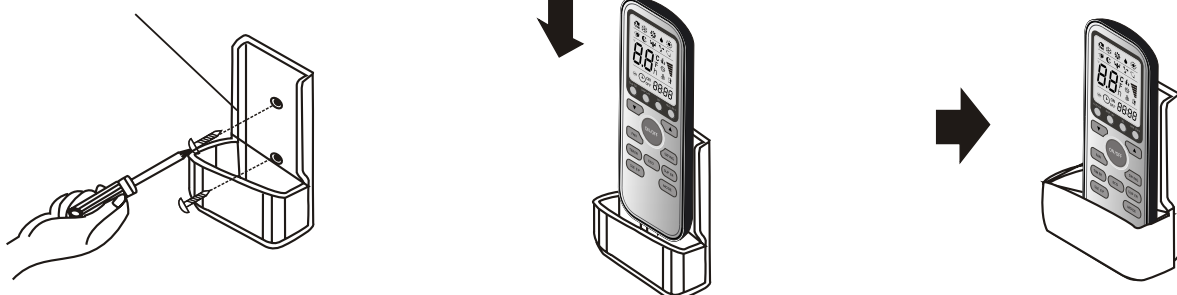
**NOTE:** If you adjust the remote control in cooling mode, it will not be possible to activate the heating function in units with heating pump. You need to take out the batteries and repeat the procedure again as described above.

1. Direct the remote control toward the conditioner.
2. Check that there are no objects between the remote control and the receiver on the conditioner.
3. Never leave the remote control exposed to the rays of the sun.
4. Keep the remote control at a distance of at least 1m from the television or other electrical appliances.



Recommendations for locating and using the remote control (if present).  
The remote control may be kept in a wall-mounted holder.

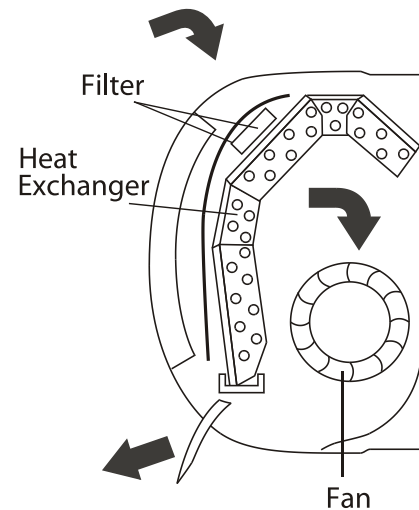
remote controller holder



## Modes of operation

The conditioner is designed to create comfortable climatic conditions for the people in the room. It can cool and dehumidify (and heat in models with heat pump) the air in a completely automatic way. The air sucked by the fan enters from the grill of the front panel and passes through the filter, which keeps the dust. Then it is conveyed to the heat exchanger and cooled and dehumidified or heated through the heat exchanger.

The heat removed from the room is drained outside. When the cycle has finished the fan gives back the fresh air in the room; the direction of the air outlet is regulated by the flaps, which are motorised up and down, and manually moved right and left by the vertical deflectors.



### SWING control of the air flow



- The air outlet flow is evenly distributed in the room.
- It is possible to position the direction of the air in the optimal solution.

The key SWING activates the FLAP, the air flow is directed alternatively from up to down.

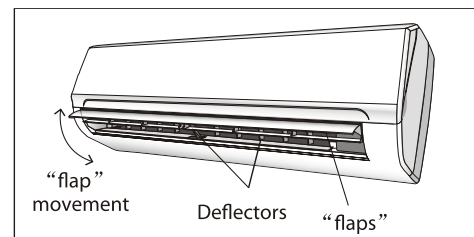
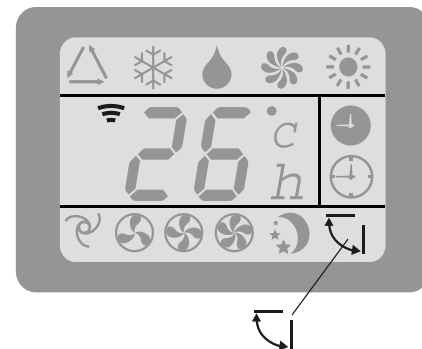
In order to guarantee an even diffusion of the air in the room.

- In cooling mode, orient the flaps in horizontal direction;
- In heating mode, orient the flaps downward as the warm air tends to rise upwards.

The deflectors are positioned manually and placed under the flaps. They allow to direct the air flow rightward or leftward.

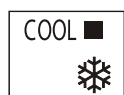
**NOTE:** Never position Flaps manually, the delicate mechanism activating them could be seriously damaged.

Never insert your hand or objects in the air outlet of the units. These units contain a fan that turns at high speed.



**NOTE:** The adjustment must be done with the appliance switched off.

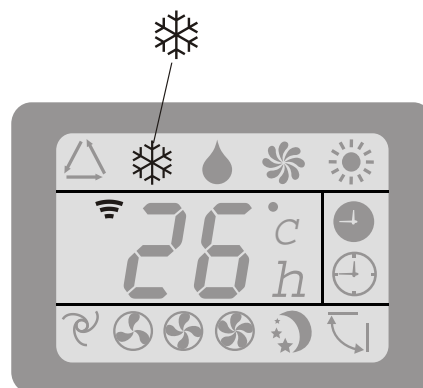
## Cooling mode



The cooling function allows the air conditioner to cool the room and at the same time reduces the humidity in the air.

To activate the cooling function ( COOL ), press the MODE button until the symbol ❄️ ( COOL ■ ) appears on the display.

The cooling cycle is activated by setting the keys ▲ or ▼ at a temperature lower than that of the room. To optimise the functioning of the conditioner, adjust the temperature (1), the speed (2) and the direction of the air flow (3) by pressing the keys indicated.



## Heating mode



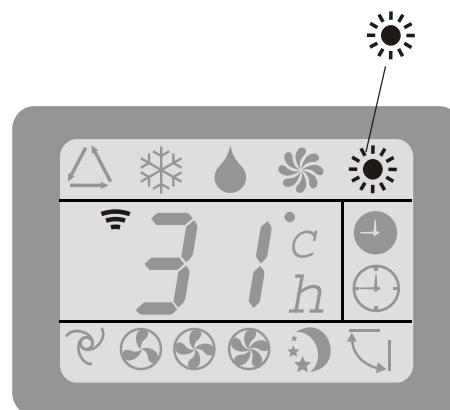
The heating function allows the air conditioner to produce hot air.

To activate the heating function ( HEAT ), press the MODE button until the symbol ☀️ ( HEAT ■ ) appears on the display.

With the keys or set a temperature higher than that of the room.

To optimise the functioning of the conditioner adjust the temperature ( 1 ), the speed ( 2 ) and the direction of the air flow ( 3 ) by pressing the keys indicated.

- The appliance is fitted with a Hot Start function, which delays appliance to startup in a few seconds to ensure an immediate output of hot air.
- In HEATING operation, the appliance can automatically activate a defrost cycle, which is essential to free the condenser from an excessive deposit of frost. This procedure usually lasts for 2-10 minutes during defrosting, fans stop operation. After defrosting, it returns to HEATING mode automatically.



## Timer mode - Timer ON



To set the automatic switching-on of the air conditioner.

To program the time start, the appliance should be off.

Press TIMER, set the temperature with pressing the key ▲ or ▼. Press TIMER again, set the time with pressing the key ▲ or ▼. Press the key more times till on the display you can read the time which passes between the programming and the timed start.

**NOTE:** Before proceeding with the timed start, program the working mode with the key MODE (2) and the fan speed with the key FAN (3). Switch the conditioner off (with the key ON/OFF).

**NOTE:** To cancel the set function, press the TIMER button again.

**NOTE:** When turning the power off, it is necessary to set TIMER ON again.

## Timer mode - Timer OFF

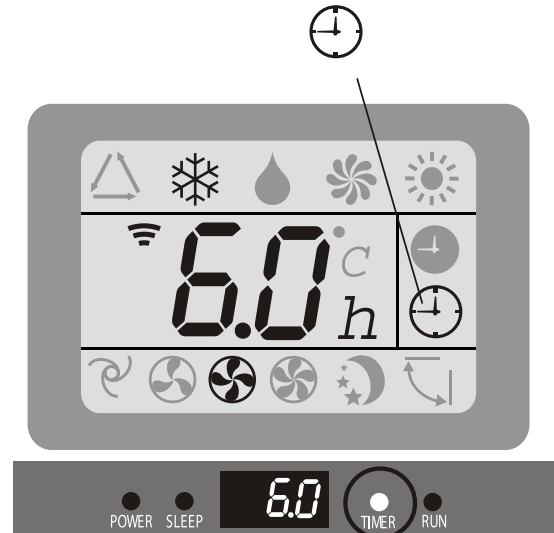


To set the automatic switching-off of the air conditioner.

The timed stop is programmed with the appliance on. Press TIMER, set the time pressing the key ▲ or ▼, press the key more times till on the display you can read the time which passes between the programming and the timed stop.

**NOTE:** To cancel the set function, press the TIMER button again.

**NOTE:** In case of power off, it is necessary to

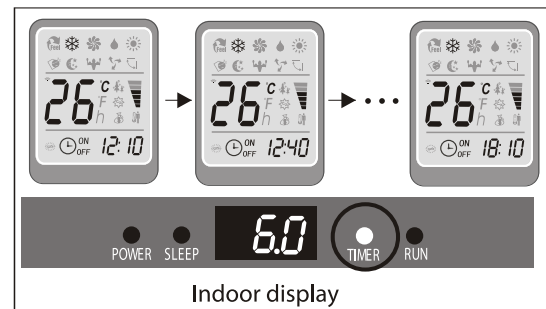


Indoor display  
set TIMER ON again.

**NOTE:** While the time was right settled, the TIMER function of this remote (clock function) can set by half hours.



Indoor display



Indoor display

## Fan mode

FAN ■



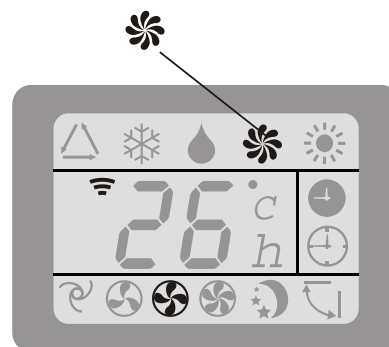
The conditioner works only in ventilation.

To set the FAN mode, press MODE until  ( FAN ■ ) appears in the display.

With pressing FAN button the speed changes in the following sequence: LOW/ MEDIUM/HIGH/AUTO in FAN mode.

The remote control also stores the speed that was set in the previous mode of operation.

In FEEL mode (automatic) the air conditioner automatically chooses the fan speed and the mode of operation (COOLING or HEATING).




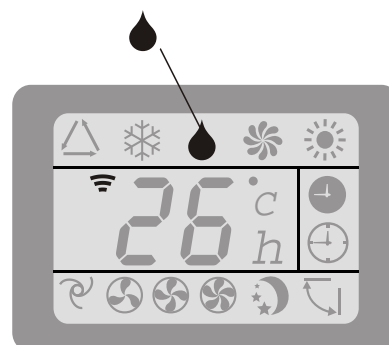
## Dry mode

DRY ■



This function reduces the humidity of the air to make the room

more comfortable. To set the DRY mode, press MODE until  ( DRY ■ ) appears in the display. An automatic function of alternating cooling cycles and air fan is activated.





## Feel mode



Automatic mode.

To activate the FEEL (automatic) mode of operation, press the MODE button on the remote control until the symbol  $\triangle$  (FEEL  $\blacksquare$ ) appears in the display.

In the FEEL mode the fan speed and the temperature are set automatically according to the room temperature (tested by the probe which is incorporated in the indoor unit) to ensure user comfort.

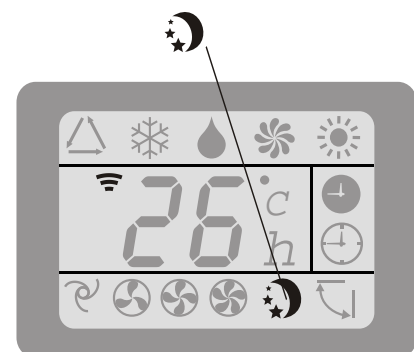
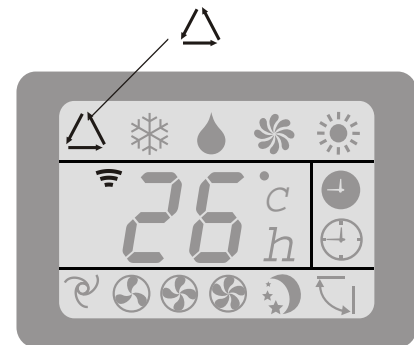
Ambient temp	Operation mode	Auto temp.
< 20°C	Heating ( for heat pump type) Fan (for cool only type)	23°C
20°C ~26°C	DRY	18°C
>26°C	COOL	23°C

To optimise the working of the conditioner, adjust the temperature (only  $\pm 2$  °C)(1), the speed (2) and the direction of the air flow (3) by pressing the buttons indicated.

## Sleep mode



To activate the SLEEP mode of operation, press the SLEEP button on the remote control until the symbol  $\text{☾}$  (AUTOQUIET) appears in the display. The function SLEEP automatically adjusts the temperature to make the room more comfortable during the night sleep. In cooling or dry mode, the set temperature will automatically raise by 1 °C every 60 minutes, to achieve a total rise of 2 °C during the first 2 hours of work. In heating mode the set temperature is gradually decreased by 2 °C during the first 2 hours of work. After 10 hours running in sleep mode the air conditioner is switched off automatically.



Indoor display

## Protection

The protective device may trip and stop the appliance in the cases listed below.

### For T1 Climate condition models:

No.	MODEL	
1	Heating	Outdoor air temperature is over 24 °C
		Outdoor air temperature is below -7 °C
		Room temperature is over 27 °C
2	Cooling	Outdoor air temperature is over 43 °C
		Room temperature is below 21 °C
3	Dry	Room temperature is below 18 °C

### For Tropical (T3) Climate condition models:

No.	MODEL	
1	Heating	Outdoor air temperature is over 24 °C
		Outdoor air temperature is below -7 °C
		Room temperature is over 27 °C
2	Cooling	Outdoor air temperature is over 43 °C
		Room temperature is below 21 °C
3	Dry	Room temperature is below 18 °C

**NOTE:** After stopping and restarting the air conditioner or after changing the mode during operation, the system does not restart immediately.  
Wait 3 minutes (protection function for the compressor).

**Notes:**

**Tempo (Aust) Pty Ltd ABN 70 106 100 252**  
**AKAI Authorised Distributor**  
**PO Box 6056 Frenchs Forest NSW 2086**  
**Customer Help Line : 1300 886 649 (AU) | 0800 836 761 (NZ)**  
**Email: [info@tempoaustralia.com.au](mailto:info@tempoaustralia.com.au) | [www.tempoaustralia.com.au](http://www.tempoaustralia.com.au)**

**After Sales Support 1300 886 649**